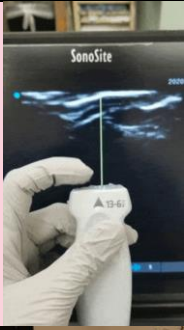




# Ultrasound Guided IV Access

## Preparation



### 1. Ultrasound Preparation

- **Equipment:** USS machine, probe cover, gel or water
- **Probe:** linear, marker on same side as screen (your left)
- **Pre-set:** vascular or superficial
- **Image optimisation:** depth, Res/Gen/Pen, gain, TGC, centre-marker

### 2. IV equipment

- Alcohol wipe
- Tourniquet
- Cannula
- IV tubing, extension
- NaCl 0.9% flush
- Tegaderm
- Tapes and board

### 3. Patient and equipment position

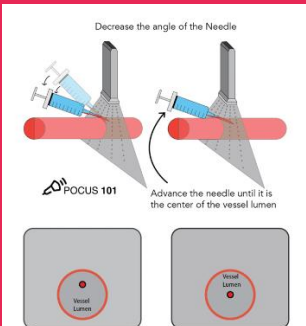
- Direct line of sight from your position, catheter direction and USS screen
- Good patient hold is key



## Technique

### 4. Choose a target vein and pre-scan to determine length and direction

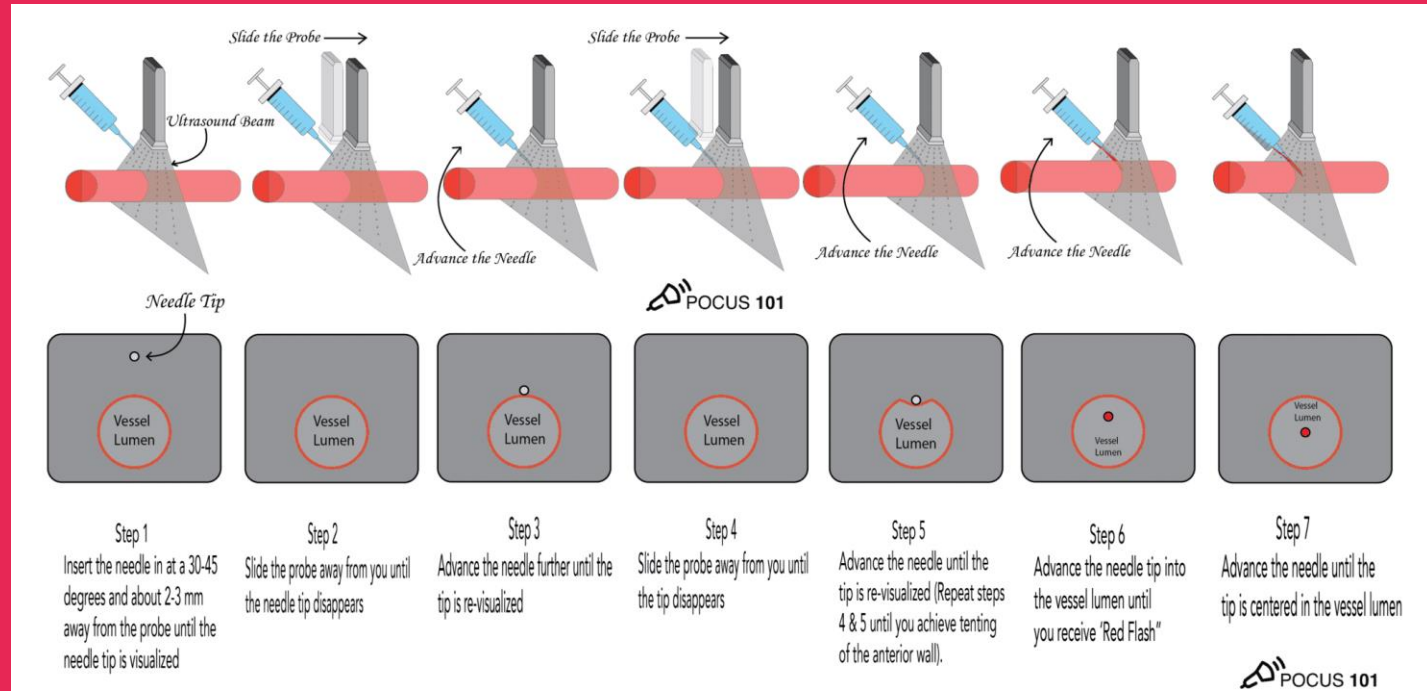
- Straightest, longest, biggest, best ergonomic direction
- Stay away from arteries and nerves if possible
- Make a mental note of depth from skin



### 5. Short-axis technique for needle insertion using creep

- Centre vessel in middle of screen and insert cannula needle 2-3mm away from transducer at 30-45 degree angle, stop insertion as soon as needle tip appears on USS monitor
- Slide the probe away from the needle tip until it disappears
- Advance the needle tip until it appears on the screen then stop
- Repeat sliding USS probe away and then advancing needle until needle is seen in vessel and flashback seen in cannula
- Decrease the angle of the needle and advance it until it is in the centre of the vessel lumen

Secure cannula as usual.



## Creep Method for Leading the Needle

