

# Basic Life Support

For babies and children with a tracheostomy

## Start here

**D**

### Dangers

Check for dangers

**R**

### Responsiveness

Check responsiveness

**S**

### Send for help

- Call 777 state paediatric code blue
- Call ORL consultant: 021 715 932

**A**

### Airway

Check and open the child's own airway  
THEN assess tracheostomy patency

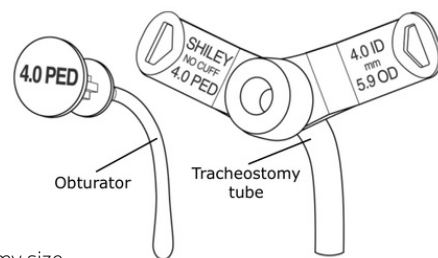
### Initial actions

- Remove all caps, filters and valves
- Deflate cuff (if present)
- Remove inner cannula (if present)
- Apply **oxygen** to mouth and tracheostomy

### Suction

Pass a suction catheter to at least 8 cm  
Suction the tracheostomy

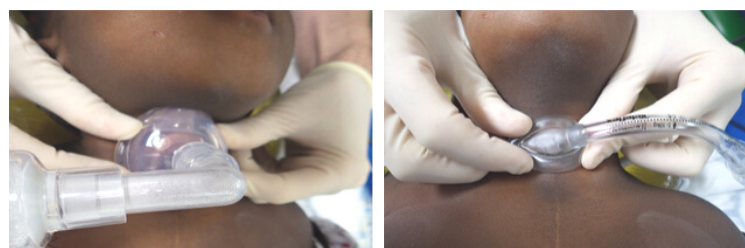
It is uncommon for paediatric tracheostomies to have a cuff and inner cannula, however be aware that these may be present in a small number of cases.



### Suction catheter size

Catheter size = 2 x Tracheostomy size

Example: Size 4 tracheostomy = Use 8 Fr catheter



Stoma can be ventilated using face-mask or LMA attached to BVM

### Tracheostomy blocked

Proceed to tracheostomy change

#### First attempt

- Extend neck and use lubricant gel
- Insert new tracheostomy (same sized tube)

#### Second attempt

- Instil 2 drops of Otrivin junior into stoma
- Insert new tracheostomy (smaller sized tube)

#### Third attempt

- Thread suction catheter through a smaller tube
- Insert the suction catheter into the stoma
- Railroad the smaller-sized tracheostomy over the suction catheter into the stoma

Can't pass catheter

Can pass catheter

Successful

Unsuccessful

**B**

### Breathing

Look, listen and feel  
at both the mouth and tracheostomy

### Rescue breaths

IF not breathing normally  
Give two breaths via tracheostomy

Can't ventilate

### Emergency oxygenation

- Remove the tracheostomy completely

#### IF upper airway PATENT

- Aim to oxygenate via mouth
- Use airway manoeuvres and adjuncts
- Ventilate mouth with face-mask BVM
- Cover the stoma (with dressing or swabs)

#### IF upper airway NOT PATENT

- Aim to oxygenate via stoma (see photo)
- Place paediatric sized face-mask or LMA over stoma, and ventilate stoma with BVM

**Refer to patient bedhead sign for this information**

**C**

### Circulation

IF not breathing and unresponsive **start CPR**

15 compressions : 2 breaths

Attach defibrillator (or AED) and follow ALS algorithm

Ensure help is coming