



Starship Foundation Impact Report

1 July 2022-30 June 2023



Our Vision is to nurture a nation of healthy children

Purpose

We fundraise to support Starship Child Health for projects and initiatives that transform and enhance paediatric healthcare.

Core Values

Angamua Aim High
Haere Mai Welcome
Manaaki Respect
Tūhono Together

Mihi

Tukuna te wairua hei
whakarei ake i ā mātou tamariki
Hei arataki i ngā mahi me tō mātou
whāinga matua, he toiora hei ngā rā ki tua.
Tōia mai te hiringa me te ngākau māia hei
whai oranga; kia kitea te kaha o ngā whānau,
ngā kaimahi me ngā hapori e aroha nei ki ā
mātou tamariki.
Whītikiria, tiakina.
Kia kore ai e ngaro noa
Tāmaua. Kia ita.
Hui e, tāiki e!

Release the spirit, to uplift our children.
To guide our work and our purpose to
ensure they have brighter futures.
Let us draw inspiration and courage for
better health; to reveal strength in the
families, the staff, and the communities,
who care for our children.
Take hold and preserve it.
Ensure it is never lost.
Hold fast. Secure it.
Draw together!
Affirm!



Vision, Purpose, Values and Mihi	02	Nursing co-leadership advancing better outcomes for mokopuna and whānau	21
From the Foundation: New beginnings with Martin and Jo	04	A tribute to our wonderful patron: Dame Rosie Horton	22
Board of Trustees	07	A special thank you to Key Supporters	23
From the Hospital: A message of thanks from Starship Child Health Directors	08	Meet our wonderful supporters	26
Helping children across Aotearoa NZ	10	Thank you to our Five Star Partners	29
What we raised and where it went	12	Our Corporate family	31
Patient story: Alfie	15	Special thanks	32
Starship on call 24/7: Air Ambulance	17	Keep up and connect with us	33
The importance of play therapy	20		





From the Foundation: New beginnings with Martin and Jo

At the Starship Foundation, we are experiencing new beginnings. It has without doubt been a year of challenges, but also a year of action, of excitement, of gratitude. Thank you for continuing to support Aotearoa New Zealand's very sick and injured children, who, no matter what is happening in the world, will always need Starship.

This year, we celebrated the opening of Whiti Ora, Starship's wonderful new research and innovation centre, located at 111 Grafton Rd just opposite the hospital. The name Whiti Ora, meaning new beginnings, was unveiled at dawn under the Matariki stars and blessed by Ngāti Whātua Ōrākei. Whiti Ora is the culmination of a long-held dream and a pivotal part of our future. With this space, we aspire to 'whiria te tāngata' - to weave the people together. It is a place to enable research, innovation, collaboration and education. It's also a place to keep families of Starship connected, to give back to our incredible donors and to bring together the many communities key to Starship. It is a beautifully designed building thanks to the talented team at TOA Architects and is only possible because of an act of generosity beyond our wildest dreams. We are incredibly grateful to the Trevor Ellett Estate who left Starship an extraordinary bequest, dedicated to research. Creating a strong research culture enables

Starship to pilot new clinical services, to improve clinical pathways and transform healthcare with innovation and excellence.

Also inside, is the Foundation's new workspace. A homebase to continue our mahi and our mission – fundraising to support Starship Child Health for projects and initiatives that transform and enhance paediatric healthcare for any New Zealand child who needs it.

Many of you will remember the late Dame Rosie Horton – our founding member, our patron and an incredibly motivated philanthropist. Just months before her passing, she and her husband Michael hosted a Starship event at their home, demonstrating her unwavering commitment to the children of New Zealand right to the very end. We pay tribute to her later within this Impact Report. As Aotearoa New Zealand emerged out of the Covid fog, like many, we've learnt to navigate



new waters. But as most Kiwis returned to their daily lives – or for many – establishing a new sense of normal, at Starship we maintained caution. As masks came off around the motu, they stayed the course at Starship. Why? To keep our littlest patients safe and our staff protected. Because while Covid finally started feeling like it was in our rearview mirror, a wave of other nasty viruses had our Starship staff and services stretched to their limits. As always, our dedicated nurses and doctors have continued to provide Aotearoa New Zealand's critically sick and injured children with worldclass paediatric healthcare and they couldn't have done it without your support.

Just as we started to move on from Covid, more hurdles lay in our path. To say we've felt the pinch this last year would be an understatement. New Zealanders have been forced to tighten their purse-strings as we grapple with the huge rise in cost-of-living. As a charity, we've felt this pinch enormously, so we know, that every dollar which came our way this year came with more consideration. Thank you for continuing to give generously to New Zealand's sick and injured children, who, no matter the economic circumstances, still need access to the very best healthcare. If that hasn't been challenging enough we also felt the impact on our fundraising

efforts as we experienced storm after storm. When Cyclone Gabrielle added an extra punch, wreaking havoc across Aotearoa New Zealand in February, many of our staff and families felt the wrath as they sought to protect their homes, while still needing to be at Starship. Thank you to businesses who generously helped us supply kai boxes to our Starship whānau in need.

However, it has not all been doom and gloom. As we mentioned at the beginning, we are at a place of new beginnings and with that comes many impactful things we'd love to share with you. Thanks to our incredibly generous supporters, we've been able to commit to a number of transformational projects.

In total, we were able to raise \$23.9 million for Starship in the 2022-2023 financial period.

Three years ago, we embarked on the biggest fundraising drive we have ever undertaken to expand and upgrade New Zealand's only dedicated Paediatric Intensive Care Unit (PICU) at Starship. PICU is a national service for the most seriously sick and injured children from across Aotearoa, New Zealand, however the expansion project, which is not yet complete, will transform many services in Starship. Prior to Covid, PICU had 22

beds and was frequently at capacity. The expansion will meet the current and future needs of the hospital with an additional 10 PICU bed spaces, meaning we can care for more children who become critically ill or need support after heart, spine and transplant surgery. It is now in the second stage of construction which will feature improved spaces for the whānau of PICU patients, an upgrade of public spaces for all whānau, the Athlae Lyon Medical Day Stay Unit and enhanced staff spaces. A special thank you to Graeme & Robyn Hart, Pub Charity Ltd, Lions Clubs of New Zealand, Lions Clubs International Foundation and Lion Foundation and several anonymous donors for your significant generosity this past financial year. A huge thank you if you also donated.

While this was the most publicly visible project, there have been numerous others that have had an incredible impact for child health – impact that will



continue for generations to come. We would like to thank our long-standing, committed Five Star Partners, Barfoot & Thompson and Mercury, for their ongoing support for Starship children, families and staff. Both have walked alongside the Starship Foundation for over two thirds of our history and are hugely cherished members of our corporate family, making countless improvements, projects and programmes possible at Starship over that time. This year we celebrated a significant milestone with Barfoot & Thompson - 20 years of partnership - in a year that also marked their 100th birthday. We can't thank our Five Star Partners and wider corporate family enough for all that they make possible for our national children's hospital. Special thanks too, to our new partners who we're delighted to have welcomed to the family this year.



Our sincere thanks to the Lindsay Foundation and all the Kiwis who support the Starship National Air Ambulance Service, helping keep Starship flying 24/7 to collect a child from around New Zealand every 45 hours and bring them to Starship. The Douglas Starship Simulation Programme has continued to train staff at hospitals around the country powered by philanthropy and the generosity of The Douglas Charitable Trust. Our thanks to the Athlæ Lyon Starship Research Trust for supporting clinical research at Starship. This year the trust funded a study looking at new treatment methods to reduce asthma in preschool children.

We are very grateful to The Akarana Community Trust and the Carter Family for supporting Starship for the first time this year and to the Rano Community Trust who generously supported the stunning fit out of Whiti Ora.

Thank you to Richard and Sabrina O'Brien who gifted us the rights to the Kingdom of Bling. We are so looking forward to this creative endeavour, together.

We are deeply appreciative of the developing relationship with His Majesty Kiingi Tuheitia Pootatau Te Wherowhero VII and we felt humbled by his invitation to attend the Koroneihana event. In August

2022, we attended a special dinner together at the Tūrangawaewae Marae as well as a Starship Charity Concert. It was important to connect and grow this very special relationship.

Almost 6 months on since a change in Chief Executive we've been focused on a new strategy to take the Foundation into the future. We are proud of the strategy we have developed, charting the course of our fundraising journey over the next 10 years. We have some lofty goals and every step towards achieving them means we are able to support many of the transformative projects that Starship Child Health needs to deliver worldclass healthcare.

Thank you from the bottom of our hearts for continuing to support Starship during a time of so much uncertainty for our country and our communities. No matter what's going on around us, Starship must go on, and there will always be families in the fight of their lives, helped along by your incredible generosity.

Thank you.

Martin Wiseman,
Chairman

Joanna Simon,
Chief Executive

FOUNDING PATRON

Dame Rosie Horton

2022-23 BOARD OF TRUSTEES

Martin Wiseman – Chair

Sharon Hunter – Vice-Chair

Adrian Evans – Friends of Starship Chair

Amy Knightley

Bryan Mogridge

Dr Cameron Grant

Emma Maddren

Dr John Beca

Dr Mike Shepherd

Murray Jordan*

Robin Skeggs

Sarah Lynds

Simon Tipene Adlam

* retired November 2022





*Above: Emma Maddren,
Toni Shepherd and
Dr John Beca*

From the Hospital: Message of thanks from Starship Child Health directors

The past year has been another incredibly busy one for Starship Child Health. Early 2023 saw many of our whānau and kaimahi (staff) impacted by flooding and Cyclone Gabrielle. Following overseas trends, winter volumes began in April and have continued relentlessly. In many respects it feels like the Winter season hasn't quite left us as illnesses still circulate and we continue to restore services following Covid-related disruption. Through all of this, however, our hardworking medical, nursing, allied health and non-clinical teams have pulled together to navigate challenges and maintain the best possible care for our mokopuna and their whānau. We never cease to be amazed by their compassion and dedication.

While 2023 has certainly presented its challenges, there has also been a lot to celebrate. Much of this has only been possible thanks to the incredible generosity and compassion of Starship Foundation donors like you.

Earlier this year we celebrated some key milestones in our Paediatric Intensive Care Unit (PICU) expansion project – Aotearoa New Zealand's only dedicated PICU. Stage one is now complete and we're well into stage two of the biggest redevelopment the hospital has ever

seen – a redevelopment which will make way for a further 10 PICU bed spaces. Support from donors like you has allowed us to progress this vital work which will provide the new Athlae Lyon Medical Day Stay Unit, more comfortable and nurturing spaces for whānau and their children and educational facilities for staff.

This year's Matariki celebration marked the launch of TamaAriki Ora (Starship Māori Health) during Kiingi Tūheitia Te Potatau Te Wherowhero VII's annual visit to Starship. The inaugural waiata (song) called Kia Manawa was released by esteemed artist Pere Wihongi and local children and celebrates Dame Rangimarie Naida Glavish's 33 years of dedicated service to Starship. Every download of the waiata from Spotify donates to Starship. TamaAriki Ora has been actively engaged at a local, regional, and national level, fostering collaboration between biomedical and indigenous knowledge to embed innovation and quality improvement across child health. A noteworthy achievement has been the appointment of leadership in priority areas, such as nursing, community and child protection. Other key highlights for TamaAriki Ora have been attending the annual Koroneihana celebrations and the introduction of Toi Ora, our staff wellbeing programme. Much of this has been made possible



with the generous support of Starship Foundation donors and we extend our most sincere gratitude.

This year you've also helped us fund critical technology, equipment, innovation and research. Research is a vital part of any leading hospital and ensures we're not only at the forefront of delivering world-class care, but that we attract and retain the best and the brightest staff. On that front, we're pleased to have significantly reduced vacancies this year, setting us up incredibly well for 2024. Staff have welcomed the return of more training and education opportunities enabling them to deepen and extend their knowledge. This has included important international conferences and visits to other tertiary children's hospitals.

All of this makes a monumental difference in helping us to deliver world-class healthcare and equitable outcomes for our mokopuna and their whānau across Aotearoa New Zealand. As we look towards 2024 and to the opportunities that lie ahead, we're immensely grateful for the generosity of incredible supporters like you.

On behalf of Starship tamariki, whānau and staff – a heartfelt thank you for supporting Starship and enabling us to continually innovate, improve and grow our services to achieve world-class, equitable outcomes for children across the country.

Ngā mihi nui,

Three handwritten signatures in black ink, representing Dr John Beca, Toni Shepherd, and Emma Maddren.

Dr John Beca, Toni Shepherd and Emma Maddren,
Starship Directors

Helping children across Aotearoa New Zealand

This past year has been a relentless one for Starship, with a **25%** increase on last year of children coming to the Emergency Department and a **9%** increase on Air Ambulance retrievals.



137,074 patient stays, visits and appointments

38,456 visits to the Starship Emergency Department

43,696 follow up outpatient appointments

8,194 hospital in the home community visits

More than **3,600** appointments with Starship Outreach Clinics outside of Auckland

191 retrievals on Starship's National Air Ambulance – a flight every 45 hours

7,711 more visits
to Starship's Emergency Department,
a **25%** increase on last year.

What we raised and where it went

Your support helps transform the lives of sick and injured children in Aotearoa New Zealand.

This year, you've helped our medical teams reach the next level, to go above and beyond, to do the extra training, get the extra piece of equipment, or fund the breakthrough research that might otherwise stall or never begin, were it not for your support.

From running a marathon or shaving your head, leaving a lasting legacy as a gift in your Will, giving a major gift, supporting Starship in your workplace, regularly giving each month, sewing Santa sacks or sending in Christmas toys, thank you for all the many ways you've helped support Starship.

While most funding is allocated to the hospital and its areas of greatest need right now, we also need to ensure we have funding for the hospital's future needs. Particularly our research projects which typically last much longer than a year, some even a decade. Just as we began to feel like Covid was in our rearview mirror, as a nation we encountered a devastating cyclone, more extreme weather events and a cost-of-living crisis. Of course, as a charity, we were impacted by all of this. And so, just like all businesses, we have reserves to enable us to adjust to any changes and keep us flexible.

Every dollar counts. Every dollar helps.

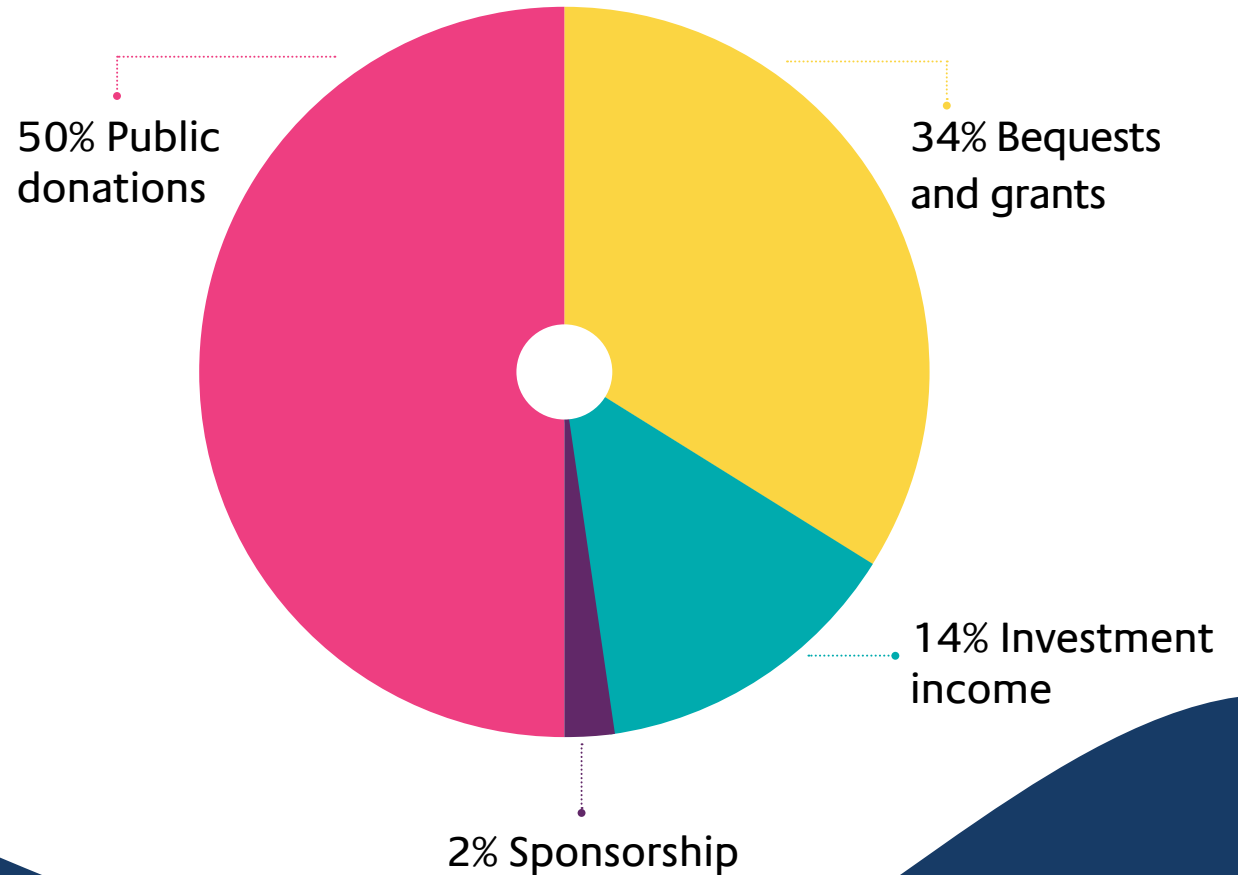


What we raised, together

\$23,890,401

+ Gift in Kind
\$1,412,676

Gifts of goods and services have assisted in the areas of fundraising programmes and hospital gifts.



Where your money went

77%

Accelerating world-class healthcare and growing funds for the future

23%

Supporting our governance and fundraising programmes

This report covers the 12 month period across the Financial Year 1 July 2022-30 June 2023 compared to our previous report which covered an 18 month period.

Through your donations, we were able to fund \$13,011,507 towards:



Clinical Transformation and Innovation

- Starship's Air Ambulance
- Clinical Pathways
- Douglas Starship Simulation Programme
- Technologies for diagnosing and discovering paediatric neurogenetic disease
- Developing comprehensive Inflammatory Bowel Disease (IBD) service at Starship
- Supporting staff with hauora wellbeing initiatives
- Testicular tissue cryopreservation project
- Podcasts developed and produced by the Douglas Starship Simulation team



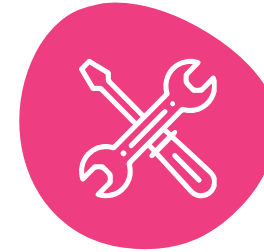
Research and Fellowships

- Optimising approach to newborn screening of preterm babies
- A whānau completed tool to improve inpatient hospital experience for tamariki with neurodevelopmental disorders
- Multi-agency investigation into gonorrhoea in pre-pubertal children
- Vaccine effectiveness study on Varicella Zoster (Chickenpox)
- Among many projects, you have helped fund research into childhood obesity, type 1 diabetes, gene discovery in paediatric neurogenetic disease and Inflammatory Bowel Disease



Facilities and Equipment

- Neonatal mattresses and controllers
- Secondary activity limbs for paediatric amputees
- Premature and newborn baby bundles
- Furniture for the Haematology and Oncology ward
- Lazy boys for Oncology



Refurbishment & Enhancements

- The ongoing extension of the refurbishment of PICU - Starship's Paediatric Intensive Care Unit, with the addition of 10 new bed spaces and 45% increase in capacity
- Outpatient refurbishment
- Children's Emergency Department refreshed



Necessary Extras

- Buzzybee injection devices
- Feeding tube backpacks
- Paediatric walking frames
- Puberty books
- Therapy equipment
- Therapy toys
- Toys for distraction in audiology clinics

Thanks for your ongoing support

Your generosity also helped support these Starship initiatives

Simulation Training

The Douglas Starship Simulation Team trains medical professionals at hospitals all over Aotearoa New Zealand, using lifelike child mannequins to teach new or uncommon treatments and techniques.

Starship Clinical Guidelines

These guidelines were viewed **2,356,914** million times in 2022-2023, providing healthcare professionals around Aotearoa New Zealand and overseas with in-depth instructions on how to treat a range of childhood illness and injuries.

Telehealth

Children and families receive Starship care by videoconference, meaning they are supported to thrive and reach their potential in their own communities.

Starship On-Call

For healthcare professionals treating children with acute needs, chronic conditions, or complex presentations, Starship advice and expertise is just a call away.

Training & Education

Helping child health professionals across Aotearoa New Zealand build skills and capacity to deliver the best care and treatment possible for our tamariki.

Safekids Aotearoa

Safekids Aotearoa uses training, events, print, video, and social media to help whānau identify safety hazards around the home, including campaigns focused on falls prevention, helmet safety, choking prevention and injuries from objects.



“I got to 150 consecutive days in hospital before I gave up counting”

Mum, Aimee

Patient story: Alfie separated from twin brother for specialised care

Twins Alfie and Blake were born at just 23 weeks at Oamaru Hospital. Alfie’s lungs weren’t well-developed and he struggled to breathe. The next few months were long and complicated.

“I got to 150 consecutive days in hospital before I gave up counting” - mum, Aimee. Blake came home, but Alfie stayed in Dunedin’s NICU. At eight months old, Alfie caught rhinovirus, which for most people is a common cold, but for Alfie it was serious.

“The doctors in Dunedin told us they'd done everything they could – Alfie needed Starship” - mum, Aimee. Alfie had developed a lung infection and needed specialised medical care. So the Starship Air Ambulance came to get him. It took some time to stabilise Alfie enough to fly, but the Starship PICU team never left him and eventually got him to Auckland.

Alfie stayed in Starship for three weeks, with Aimee flying back and forth from Auckland to Dunedin to go home and care for her other children - Blake (Alfie’s twin), Emileigh, 5 and Amelia, 8. During that time, Starship Nurse Teresa constantly sent video and photo messages to Aimee to keep her up-to-date with Alfie’s condition. Aimee says this personal care meant a lot.

After three weeks, Alfie was off sedation, progressing well on high-flow oxygen and stable enough to fly back to Dunedin Hospital.



Today Alfie is back home in Duntroon, Otago. His paediatrician in Dunedin stays in contact with Starship to ensure he's getting the best care possible. Alfie's in the process of being weaned off oxygen support during the day with Starship helping guide this transition. Eventually, he'll come off altogether.

“He's doing so well on his oxygen now. He's reducing his oxygen use, and we're looking forward to him breathing all by himself.”

It's hard to say what Alfie's long-term prognosis will be. They'll know more once he's a bit older and he starts trying to walk and talk.

Aimee and John credit Starship for saving Alfie's life.

“If it wasn't for them (Starship), he wouldn't be here today...It's where he went when everyone else had done all they could and we're so grateful,”

Aimee and John



Starship on call 24/7: Air Ambulance

The Starship Foundation contributes **\$1.5 million** annually to help keep the Starship National Air Ambulance service flying 24/7, 365 days of the year. The Lindsay Foundation is a key supporter and has generously donated **\$500,000** annually since 2019.



Starship National Air Ambulance

Bringing children from across Aotearoa New Zealand to Starship for urgent medical care

Picks up a child every 45 hours

On call 24/7, 365 days a year

191 retrievals from June 2022 to July 2023, a 9% increase from the previous year

Travelled over 140,000 kilometres from Kaitiāia to Invercargill.



Flying Intensive Care Unit a critical lifeline for children across Aotearoa



Fourteen-year-old Mac, from Otago, was mountain biking with his friends when he fell off and hit his head. He was in a critical condition and needed urgent, specialist medical care. That care was over 1400 kilometres away, so the Starship Air Ambulance flew to Dunedin to retrieve him and bring him to Starship.

“If Starship didn’t have a bed available for Mac and he couldn’t get there, we don’t know if Mac would still be here today” Maree Denniston, Mac’s mum

Starship’s National Air Ambulance service is Aotearoa New Zealand’s only flying paediatric intensive care unit. Ready to go at a moment’s notice, it flies on average every 45 hours to retrieve critically sick or injured children from around the country.

The Starship Paediatric Intensive Care Unit (PICU) flight team carried out 191 retrievals from June 2022 to July 2023, a 9% increase from the previous year. The team travelled over 140,000 kilometres from Kaitaia to Invercargill, bringing children from across Aotearoa New Zealand back to Starship for urgent medical care.

Dr John Beca, Starship Clinical Director, Medical and Surgical explains why this is such a vital service;

“Accidents and illness can happen to our children anywhere in New Zealand. Starship has New Zealand’s only dedicated Paediatric Intensive Care Unit, and any child requiring anything more than short term intensive care comes to Starship. The Starship National Air Ambulance service ensures that any child, regardless of where they are, gets the care and treatment they need.”

There are four crew, a PICU flight nurse, PICU flight doctor, the pilot and a second pilot or load master, with a team on call 24/7, 365 days a year, ready to respond to an emergency.

Flight Nurse Rowan Sims says you have to be able to adapt and think on your feet.

“There are many elements to consider, whether it's moving critically sick kids, supporting highly stressed families, working with unfamiliar teams and resources, or dealing with bad weather and fatigue. It's a privilege to be a part of the difficult and often emotional times these kids and families are going through. It's the best job in the world”.



The importance of play therapy

Play helps children make sense of their world, and in a hospital setting play is especially important. A play-based approach to hospital care supports children and whānau by reducing stress and anxiety, regulating emotions and helping children to understand and take part in their treatment and care.

The Starship play specialists, who are highly-trained education experts, work alongside nurses, doctors and allied health professionals... (such as dietitians, physios and psychologists) to support children in hospital. This might be with children and their whānau at the child's bedside, in a playroom, in a treatment room or in the Children's Emergency Department (CED).

On any given day a play specialist might

- Create a mascot or hospital doll and use role play to help a child understand their treatment or to prepare for surgery.
- Help a child build coping strategies like visualisation and breathing techniques to reduce stress and anxiety around a particular treatment or procedure.
- Use a variety of techniques to prepare a child for a procedure, for example, during an IV-line insertion the play specialist might use distraction with a toy or a story, use numbing cream, or use a small machine like "buzzy bee" which confuses nerve messages to the brain, reducing pain.
- Help prepare children quickly for emergency procedures in CED.
- Provide distraction and entertainment through creative arts and crafts and games for children staying on a hospital ward or waiting for an appointment.

"I work with Play Specialist, Chloe who has a playroom in the orthopaedic ward. She does all sorts of activities with me. We made hospital mascots that you get to do stuff to, and we made friendship bracelets. It's been really fun because it gives you something else to think about, than why you're here."

Marley, age 11, Mt Maunganui





“Let us strive for a child health system that reflects the essence of our communities”

Toni Shepherd, Starship Director of Māori Health

Nursing co-leadership advancing better outcomes for mokopuna and whānau at Starship

Thanks to your generous support, Starship has taken the significant step towards enhancing paediatric healthcare by appointing two Nurse Directors. These appointments signify more than a leadership change; they embody a resolute investment in a child health system that places mokopuna at the centre and prioritises whānau. This forward-thinking approach is not only essential for nurturing positive health outcomes in our young patients but is also a strategic investment in the future of our nation.

Hera Watkinson and Romana Raby officially assumed their Nurse Director roles at the beginning of 2023, bringing a wealth of knowledge and expertise to lead a team of over 800 nurses. What sets this co-leadership apart is the collaborative practice between Hera and Romana, enriching strategic and operational decision-making at local, regional and national levels.

Toni Shepherd, Starship Director of Māori Health emphasises that these appointments signal a powerful commitment to a child health system that is mokopuna-centric and centres on whānau. **“Let us strive for a child health system that reflects the essence of our communities, embraces diversity and ensures the wellbeing of our mokopuna is not merely a priority but a shared commitment for generations to come”.**



A tribute to our wonderful patron, Dame Rosie Horton



We were deeply saddened about the passing of Dame Rosie Horton, Starship Foundation Patron, the Founding Chair of the Friends of Starship and our pioneer supporter.

She was the epitome of compassion and worked tirelessly to champion better healthcare for all New Zealand children.

Thirty years ago, New Zealand's new children's hospital needed urgent paediatric equipment. Even getting to Starship could be a challenge.

Dame Rosie was initially reluctant to get involved with Starship, with numerous other charity commitments filling her calendar. A patient's story changed her mind.

In 1992, Dame Rosie met a mum and her acutely unwell child who had travelled from Southland to Starship. The journey had taken them four days by bus. Rosie thought that simply wasn't

good enough. New Zealand's children deserved better. Dame Rosie mobilised her friends, and the Friends of Starship was born.

Their first fundraising event was the TV3 telethon in 1993, raising **\$1.5 million** for Starship. Since then, with your help, over **\$160 million** has been raised for the hospital. She was relentless in her approach when asking people for their support of the hospital.

Just six weeks before she passed, we spent an afternoon at Dame Rosie's home, where she and her husband Michael hosted a 30-year reunion for the Friends of Starship. This was such a special occasion, reconnecting and celebrating, and we will treasure these recent memories where we felt lucky to be in her orbit.

We were regaled with stories of her waiting outside the Northern Club in the '90s, approaching prominent businessmen for their support – some members

even complained to Rosie's husband about her motivated fundraising! It's these stories that show her tenacious dedication, but also her warmth and wit.

We have named our seminar room Kōtuku in memory of Dame Rosie in our new building Whiti Ora. Her family chose Kōtuku, the white heron, because the bird is as beautiful and rare in Aotearoa as Dame Rosie herself.

We are forever grateful to Dame Rosie for her vision, her feisty fundraising and her generous spirit.

Her legacy will live on as we continue the important work she started.

He taonga rongonui te aroha ki ngā tangata. Goodwill towards others is a precious treasure.

Rest in peace Dame Rosie, your love and dedication will forever be remembered.

A special thank you to our Key Supporters

To the many individuals, the families, the organisations, the trusts and foundations who support Starship and share our commitment to nurturing a nation of healthy children, we say a heartfelt thank you. We are proud and very grateful for your support.

Thank you to the Hitch family

It was a personal experience that inspired John and Jet Hitch to give to Starship.

While they were in the emergency department for a minor injury for their son, it opened their eyes to all the emergencies, minor or serious, that families go through at Starship every day.

“Seeing all the other kids in the hospital with much more serious injuries and sicknesses than our son had, made us realise just how important a service Starship provides,” John says.

“I started my parenting role quite late in life, and as a father I felt that overwhelming desire to protect. It was a great experience seeing what was going on in the hospital and witnessing the dedication of the

Starship team.”

John and Jet have helped fund a three year Paediatric Intensive Care Unit (PICU) nurse education programme. The Hitch Family’s gift has supported more than 50 nurses to further their education needed in PICU, including the requirement to have 75% of nursing staff hold a postgraduate qualification.

Other projects they have supported include the Douglas Starship Simulation Programme as well as providing funding for Further Education to attract and retain the best and brightest clinicians to Starship.

“I think anyone who has experienced having a child in Starship, and in a similar position to me, would help. You won’t regret giving. To know that I’ve been a small part of making a difference is greatly satisfying.”




Thank you to Pub Charity

Pub Charity is part of our Trusts and Foundations family and a long-standing supporter of Starship, having given over \$4 million over the last 10 years. Projects they have supported include refurbishments and upgrades of our national children's hospital, including the expansion of New Zealand's only Paediatric Intensive Care Unit (PICU).

Other refurbishments include contributing **\$1 million** to level 5 General Paediatrics, which until the upgrade in 2016, had not seen any development in 25 years. In 2017 they contributed new floors for level 3, the Paediatric and Congenital Cardiac Service, and in 2018 to a refurbishment of a Day Stay Unit.

Pub Charity distributes funds to community organisations all over Aotearoa New Zealand. Through funding applications, they support a large number of organisations from across the spectrum - community groups, health, sport, education, emergency services, environment, culture.

“Pub Charity is proud to support Starship, and contribute to hospital upgrades that are going to save and improve little lives. Through our support, we hope to make life a little brighter for all the awesome little battlers in Starship and for their families.” Martin Cheer, Managing Director, Pub Charity.



“Through our support, we hope to make life a little brighter for all the awesome little battlers in Starship and for their families.”

**Martin Cheer, Managing Director,
Pub Charity.**

The Starship Foundation applies to a diverse range of Trusts and Foundation across New Zealand to support vital projects at Starship. These include licensing trusts, legacy estates and philanthropic family foundations that share our vision of better health and brighter futures for every child in New Zealand that needs it.

Thank you to the Athlae Lyon Starship Research Trust

The Athlae Lyon Starship Research Trust was established in 2010/2011 and was responsible for providing the first funding for clinical research at Starship Hospital in 2011 followed by annual grants since then. The Trust currently enables the Foundation to fund its pre-eminent research award each year.

Due to the number of talented clinicians at Starship there are always more research proposals than we are able to fund.

Over the last six years dedicated clinicians have been able to pursue research into gene testing for neurogenetic diseases, early identification of Cerebral Palsy, and the long-term health outcomes for babies who go through heart surgery.

In 2023, the Athlae Lyon Starship Research Trust supported a trans-Tasman study investigating better health outcomes for preschool aged children (5 and under) with asthma.

Asthma is the most common childhood chronic disease, with Aotearoa New Zealand having one of the highest child asthma rates in the world, leading to more emergency department visits and hospitalisations.

The research team are investigating a new treatment method that could potentially reduce the amount of time and medication needed.



Above: Dr Gina O'Grady, researching gene testing

A special thank you

We're incredibly grateful for all the support we have received for the PICU expansion. PICU now has more vital space to provide care and treatment to our sickest or most injured children. There are now 10 extra bed spaces, increasing capacity in PICU from 22 to 32. That's a 45% increase on the dedicated bed spaces PICU previously had.

Stage two of the expansion is underway and will include improved facilities for families and staff, the Athlae Lyon Medical Day Stay Unit, training and educational spaces, new public areas and additional office space. It's the biggest redevelopment the hospital has seen since it opened in 1991.

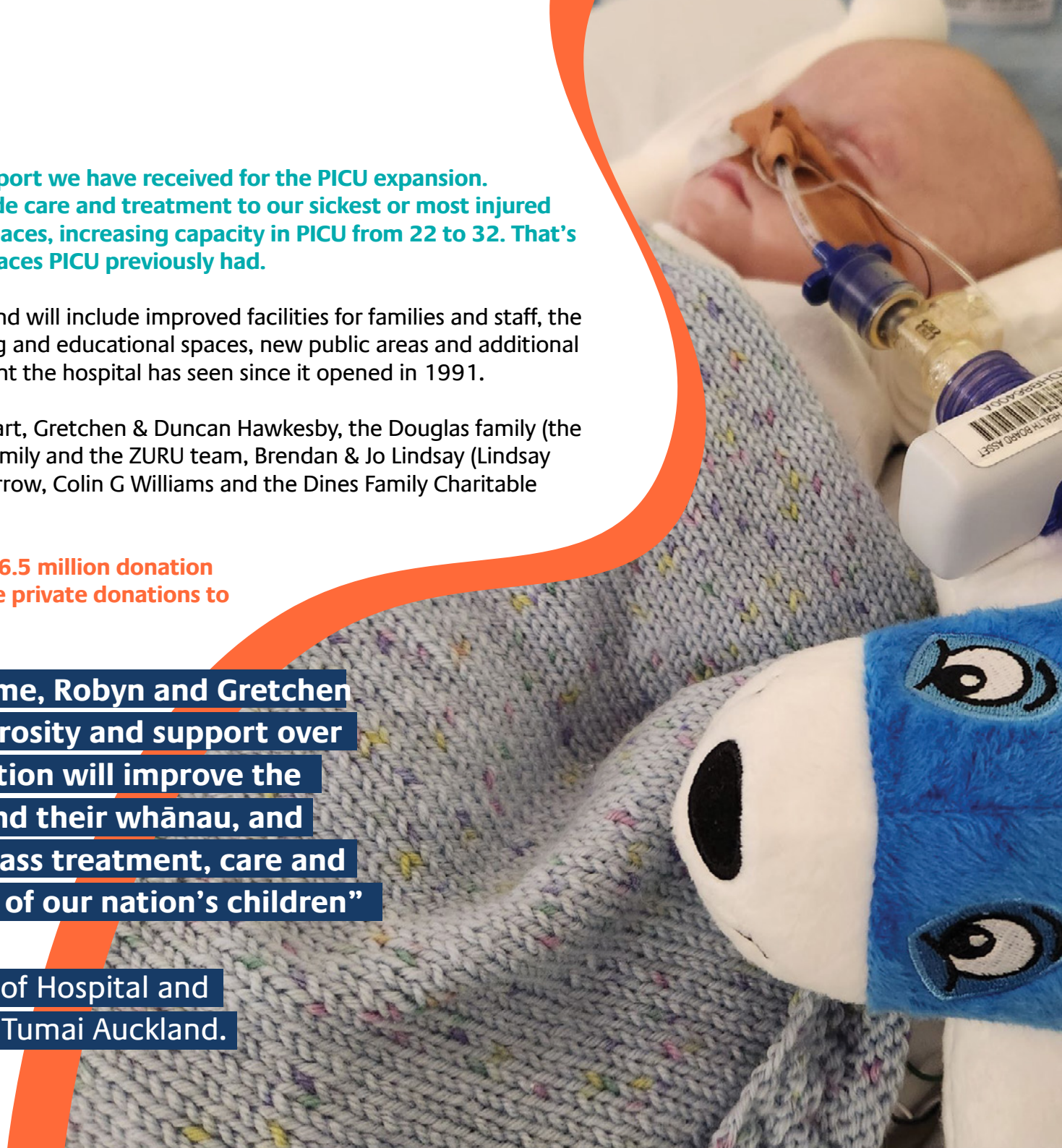
A special thank you to Graeme & Robyn Hart, Gretchen & Duncan Hawkesby, the Douglas family (the Douglas Charitable Trust), the Mowbray family and the ZURU team, Brendan & Jo Lindsay (Lindsay Foundation), Dulcie Taylor, Sue & John Morrow, Colin G Williams and the Dines Family Charitable Trust for their generous gifts.

Graeme and Robyn Hart's remarkable \$6.5 million donation towards PICU is one of the largest single private donations to Starship since the hospital opened.

"We are so grateful to Graeme, Robyn and Gretchen for their extraordinary generosity and support over the years. The family's donation will improve the lives of countless children and their whānau, and will help us provide world-class treatment, care and facilities for the very sickest of our nation's children"

Dr Mike Shepherd

Te Whatu Ora Group Director of Hospital and Specialist Services for Te Toka Tumai Auckland.



Meet our wonderful supporters

Ruth, regular donor: This is who I am

If there were more people like Ruth in the world, this world would be a better place. Based in Christchurch, Ruth has been donating \$20 a month to Starship for as long as she can remember. She does the same for other charities close to her heart. During a chat with Ruth on the phone, we were lucky enough to find out more about this big-hearted 91-year-old.

“There have been so many children who’ve gone through life-threatening situations in different ways and if I can help in any way to save a life or give help in any way then that’s what I ought to do.

I’ve got family myself and you never know what could happen. My husband had major heart surgery, massive stroke, epilepsy, just about everything, but he

came through what many would have died from. I don’t have anyone myself that’s been to Starship but that doesn’t make a difference. You can still give support to others and their families.

I know many who go through Starship need help. We just don’t know what could happen. I don’t want anyone to die if I can help. I don’t want anyone to suffer if I can help.

Although I’m not rich, far from it, but I can still do it, I’m not going to starve. But at my age, I’m over 91, time is not on my side. Hopefully somewhere along the way, someone’s life has been better from me trying to help. I’ve been regularly donating to Starship many, many, many years! I started when a girl from my church in Christchurch had to go up to Starship.

There are so many sick children and I know there is a reliance on public donations. I’ve got friends who could help, who should, but don’t. It’s mainly those who haven’t got it, who give. This is who I am.”

“Although I’m not rich, far from it, but I can still do it, I’m not going to starve. But at my age, I’m over 91, time is not on my side. Hopefully somewhere along the way, someone’s life has been better from me trying to help. I’ve been regularly donating to Starship many, many, many, many years!”



Gary, he pedalled and pedalled and pedalled

From giving up presents, to running a marathon, climbing a mountain or shaving your head, there are so many ways our community stars have made a difference.

Gary Seekup embarked on a mission for Starship kids. A giant, exhausting, inspiring mission.

The 66-year-old dad of three and grandpa of five rode his bike the entire length of Aotearoa New Zealand to raise money for Starship. That's 3,000kms!

Gary, from Mairangi Bay, carried everything he needed on his bike, including clothes, navigational gear, water and filter, backup power sources, many bike spare parts and the essential painkillers.

“I want to make sure all kids in New Zealand have access to the first-class fantastic service they have provided to my children and grandchildren in the past.”

Starting off from Cape Reinga just days after Cyclone Gabrielle wreaked havoc across the country, Gary was undeterred.

“I never once thought of giving up, I enjoyed it so much, I felt so lucky to be doing this...I saw so much of New Zealand that no one else would see in their life, places in the middle of nowhere that I never knew existed,” he says.

He does concede there was one pretty tough part – a hill between Picton and Nelson that he's not keen to ride up again. But there were many sweeteners along the way which helped keep him motivated.

Strawberry milkshakes for morning tea. Pies. His wife driving in the van nearby in which he would sleep each night. The amazing support from regional communities cheering him on. Beer and chips at the end in Bluff.

Dubbed Tour Aotearoa, the annual bike trip is the brainchild of the Kennett brothers, some of NZ's most experienced trail riders.

Gary raised **\$10,470** for the Starship Foundation and we couldn't be more grateful to him for choosing to support Starship.

As we reflect on the year gone by, we extend our immense gratitude to all the amazing community fundraisers like Gary. Your contributions shine brightly as a testament to the strength that emerges when a community comes together. Whether riding the length of the country, walking or running a marathon, swimming for hours and hours, auctioning items of value, or shaving your hair off, the funds raised helped children receive world-class treatment and care at Starship. Thank you.



Dr Helen Evans on why she's leaving a Gift in her Will to Starship

“I'm from South Wales and I did my medical training in Birmingham. I've been working at Starship for nearly 19 years. I'm a specialist in children's liver diseases and there was a job available here because they'd only just started doing liver transplants for children in New Zealand.

I came here temporarily and then I never went back because I like it here so much. By and large, our service is really successful and it means we can take these poor children with liver disease and transplant them and give them a new life.

Who wouldn't want to be part of that, really? Because it makes the job really rewarding. And I've just met the most incredible people over my time here, really. More than anything, the patients and their families.

So when it came to thinking about my Will, which I really started to think about when COVID started because at that point we all thought we were going to die, didn't we? So I got my power of attorney sorted and my Will.

I don't have any children of my own, so what am I going to do with my money? I have a partner, but

he's more than capable of earning his own money. I've got nephews, but my brother and sister are more than capable of looking after them.

So, I just thought it's about legacy. I'd quite like to think that what I do here is just the start. I'm here for a finite time in my career and I can still have an influence when I've retired and when I've died, by allowing other people to do some work by leaving some funding behind.

Why wouldn't I leave my money to a charity that can use it to carry on my work? So I'm very comfortable with my decision, more than happy to tell my nephews, my partner, and my brother and sister that this is what I've done. I've left a little bit for them, but I also think, “What do I want at the end of the day?”

I was an executor for a friend who died and then my dad who died earlier this year. Both of them put really good plans in place, which made it much easier for me knowing exactly what they had wanted.

So what I would say to people is to make a plan to ensure that their families know what they want.”

Dr Helen Evans

Service Clinical Director of Paediatric Medical Specialties at Starship Child Health



Thank you to our Five Star Partners

Celebrating 20 years with Barfoot & Thompson

2023 marked an incredible milestone - 20 years since Barfoot & Thompson joined the Starship Foundation whānau.

Barfoot & Thompson cares deeply about supporting our national children's hospital - a commitment which flows throughout the entire business, with branches holding their own fundraisers and staff volunteering to help, often in their own time. As a Five Star Partner they've enabled initiatives, projects and improvements that make a meaningful difference for Starship children, families and staff every day.

Peter Thompson, Managing Director, says he's exceptionally proud to have contributed over \$6 million in support of children's healthcare since 2003.

"It's been an extraordinary journey, and together, we've made a truly remarkable impact for children right across the country."

"The partnership between the Starship Foundation and Barfoot & Thompson has endured for two decades, only becoming stronger with time. The life-changing work the staff at Starship do and the care they provide to patients and their families is a cause we truly believe in."

**Peter Thompson, Managing Director,
Barfoot & Thompson**



BARFOOT & THOMPSON

A few of the highlights across the past two decades include:



The Neonatal Intensive Care Unit funding equipment and furnishings in support of Starship's tiniest patients and their whānau.



The Magic of Reading programme lifting the spirits and wellbeing of each child who spends a night in Starship with the gift of their very own book to take home.



International Nurses Day celebrating the incredible mahi of Starship nurses with a morning shout of coffee and breakfast treats.



Whare Hauora bringing healthcare directly to children in their communities with modular healthcare units for two Auckland schools.



Thank you to our Five Star Partners

Improving rheumatic fever outcomes thanks to Mercury

Over the last year, Mercury, alongside their wonderful customers, have contributed more than \$1.2 million towards Starship, our national children's hospital.

Supporting equitable health outcomes for all tamariki is something Mercury is particularly passionate about. This year one of the projects they're proud to have helped fund is a critical update to the New Zealand Guidelines for Rheumatic Fever and Rheumatic Heart Disease Diagnosis and Management.

In Aotearoa New Zealand, approximately 140 children under 14 are hospitalised with rheumatic fever or rheumatic heart disease each year – a rate that is much higher than in comparable countries. It is also an inequitable illness, with Māori and Pacific children more likely to be affected.

The new guidelines, which are being updated in association with the Heart Foundation, are vitally important as they will help ensure

rheumatic fever is diagnosed and treated earlier. This means fewer children will develop rheumatic heart disease and risk potentially severe, life-changing heart damage.

Craig Neustroski, GM of Commercial Operations at Mercury, says they're so proud to be contributing to improved outcomes and quality of life for hundreds of Kiwi kids.



“For over two decades Mercury has proudly supported Starship as a Five Star partner, and this enduring collaboration fills us with immense pride. Our wonderful customers have joined us in making a significant impact on Starship and the incredible young superheroes it cares for. Our commitment to this partnership extends beyond the numbers; it’s about the countless smiles we’ve brought to the faces of young patients, the hope we’ve instilled in their families, the unwavering support we’ve provided to the incredible medical teams, and, most importantly, paving the way for a brighter, healthier future for Kiwi kids and their families.”

Craig Neustroski

GM of Commercial Operations, Mercury

The updated guidelines will help children like rheumatic fever fighter, Lavenita.

Our Corporate family

Thank you all for your passion, commitment and support. Your generosity makes a huge difference for Starship children and the families that love them. We couldn't do what we do without you!



The huge rise in cost-of-living has meant New Zealanders have been forced to tighten their purse-strings this year. We know that every dollar which came our way this year came with a big decision. Thank you for continuing to give generously to New Zealand's sick and injured children, who, no matter the economic circumstances, still need access to the very best healthcare.

Five Star Partners



Pro bono Partners

Deloitte
Discovery NZ Ltd
DLA Piper
Eriksens Global
Giltrap Group
HYPER
oOh!media
PwC
Sky
TVNZ

Partners

Delicious Revolution
Edwards & Co
Equipo
Float Mortgages
Giltrap Group
Ideqa
Learning Spaces Global
No 8 Retail Group
Pioneer Manufacturing Ltd
Scholastic New Zealand
Spectacular Cards
Total Plan Cleaning
Wallace Cotton
Waste Free Celebrations
Westcon
Zeus Packaging

Corporate Supporters

Adrienne Winkelmann Ltd.
Auckland One Rail
Auckland Zoo
Endeavour Live
Event Hospitality and Entertainment
Fonebank Recycling Ltd
Goodman Property Trust
Grp Trading Ltd
J. A. Russell
JASS Kumar Investments Ltd (T/A Mister Minit Sylvia Park)
Kanda Homes Ltd
Munro Footwear Group
New Bay Group
Sanitarium Health Food Company
SEA LIFE Kelly Tarlton's Aquarium
Spark
Studio DB
Tubman Heating Limited
VAST Billboards
The Walt Disney Company
Whitcoulls
ZURU

Special thanks

Key supporters

Acorn Foundation Trust
Aotearoa Gaming Trust
Asian Savour World Pty. Limited
Athlae Lyon Starship Research Trust
Bob & Josie Maslin
Boyd Clarke Foundation
Brendan and Jo Lindsay - Lindsay Foundation
Brian Cartmell
Browns Bay Rotary Club
Child's Play Charity
Chris Batchelor
Chris Dever-Young
Cliff Lyon
Cloud Star Limited
Colleen Adrienne Patton Todd
Craig Smith
Darren James
David W L Cooke
Deborah Sellar
Doris May Chapman Charitable Trust: Proudly managed by Public Trust
Douglas Charitable Trust
Eddie Neill
Elizabeth, Jonathan and Matthew O'Callaghan
Eric and Janette Williams Starship Hospital Childrens Trust
Eric Shi

Four Winds Foundation Limited
Frances Skeet Charitable Trust
Gretchen & Duncan Hawkesby - Graeme & Robyn Hart
Heather Forss
Hugh Green Foundation
Industrial Tube Manufacturing Co. Ltd
J B W McKenzie Trust
Jay & Claire Robertson - The Robertson Foundation
Jean Smith
Jennifer Smith
Joanna & Charles Tatham
Kawarau Trust
Kelly Milligan and Krysten Vonk
Kiingi Tuheitia Pootatau Te Wherowhero VII
Kiwibank RMBS Trust
LeAnne Robinson
Leonie Higgins
Lion Foundation
Lions Clubs of New Zealand
Lions Clubs International Foundation
Liu's Family
Lynnette Erceg & Matthew Pringle
Margaret M Blackwell Bequest
Martin Wiseman & Dame Helen Winkelmann
McDonald Family Trust
New Zealand Community Trust
N H Taylor Charitable Trust: Proudly managed by Perpetual Guardian
N R & J H Thomson Charitable Trust: Proudly managed by Perpetual Guardian
NuVasive
Paul Fox
Pelorus Trust

Penny Dold
Perpetual Guardian Staff Payroll Giving Fund
Peter & Fiona Thompson
Phillip Verry Charitable Foundation
Pub Charity Limited
Rano Community Trust
Richard Aickin Memorial Fund
Robert Horton Memorial Trust
Robert & Nancy Felix
Rotary Club of Auckland East
Sharon Delaney
Shihan Chen
Sir John Davies & Lady Trish
Stephen Barfoot
Stoney Creek & Curate Church
The Akarana Community Trust
The Carter Family
The John Dixon Elliot and Dorothy Hoole Elliot Charitable Trust.
The Stewart Charitable Trust
The Trusts Community Foundation
The Walter and Rana Norwood Charitable Trust
Tubman Heating Limited
Ulrike McLachlan
Wayne Francis Charitable Trust

Gifts in Wills

Estate of Adrienne Joy Hart
Estate of Agnes Elizabeth Tosland
Estate of Alan Ross Barnett
Estate of Anna Elise Jensen
Estate of Arthur Tomest Butler
Estate of Cornelis Jongkind
Estate of Cushla R Daun
Estate of G A Palm
Estate of Geoffrey Russell MacGregor
Estate of Graeme Eric Culling
Estate of Harry Widmer
Estate of John Fleming Murray
Estate of Karen Lucy Ratcliffe
Estate of KR Edwards
Estate of Leigh Pope
Estate of Malcolm Bridge
Estate of Margery Turner
Estate of Marion Shaw
Estate of Marion Sparks
Estate of Marjorie Smith
Estate of Mollie Irene Gower
Estate of Murray Stoughton Rider
Estate of Nancy Ruth Gardiner
Estate of Nellie Keane
Estate of Peter Joseph Richardson
Estate of Raymond Seddon
Estate of Rhys Catherine Sykes
Estate of Ronal Margaret Scarlett
Estate of Stuart Allan Bruce
Estate of T Vlaar
Estate of Werner Otto Bruno Kiel
Estate of William Dunbar

And thank you also to all the key supporters who chose not to be named





Keep up and connect with Starship

Everyday, extraordinary stories unfold inside Starship. Whether it's a newborn baby getting a lifesaving heart operation, a young amputee doing cartwheels with their first prosthetic activity limb or being delivered a sack of pressies by Santa while undergoing treatment on Christmas Day.

Everyday, extraordinary stories also unfold outside Starship. Whether you shaved all your luscious locks off, ran your first marathon, baked up a storm or, or one of our personal favourites, relinquished presents for your birthday in favour of Starship donations.

We love to share all of the wonderful moments inside and outside of Starship across our social media.

Are you following us yet?

-  Facebook/starshipfoundation
-  @starshipfoundation
-  @starshipfoundation
-  Starship Foundation





Donate

With your help we can nurture a nation of healthy children, together. Please use this QR code if you would like to make an online donation today.

Contact us

Physical Address:

Whiti Ora
111 Grafton Road
Grafton
Auckland 1010

Postal Address:

Starship Foundation
PO Box 9389
Newmarket
Auckland 1149

Office Phone: 09 307 4957
0800 STARSHIP (0800 782 774)

General enquiries email:
starshipfoundation@adhb.govt.nz

Starship charity registration number:
CC24272