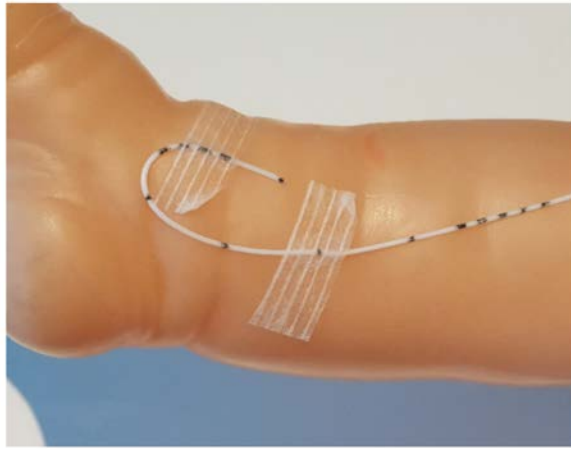
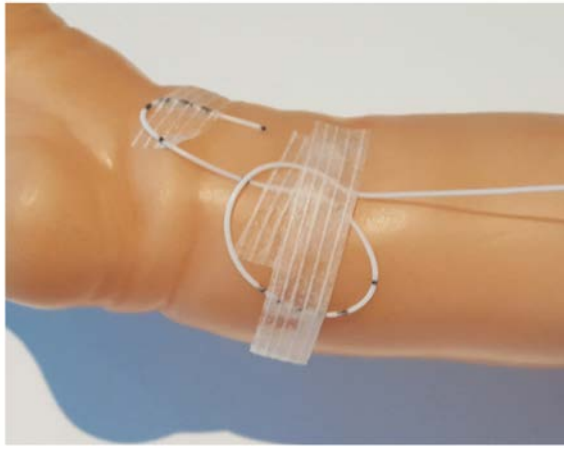


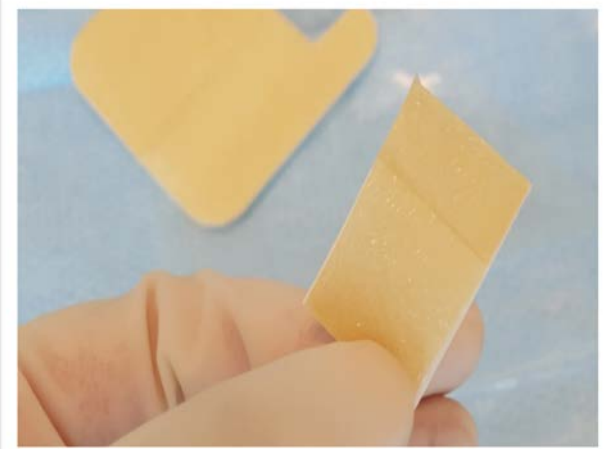
SECURING LONGLINES



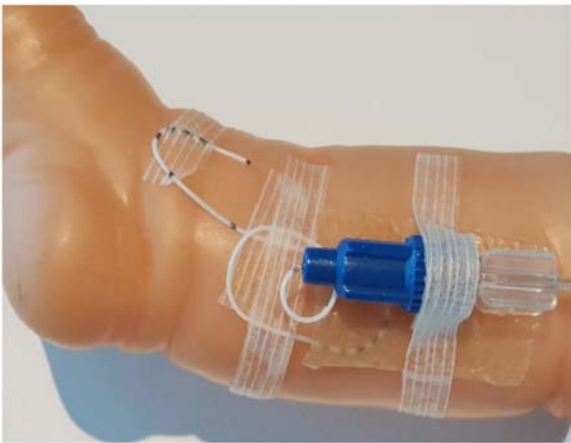
STEP 1: Secure near insertion site and reinforce 1-2cm above.



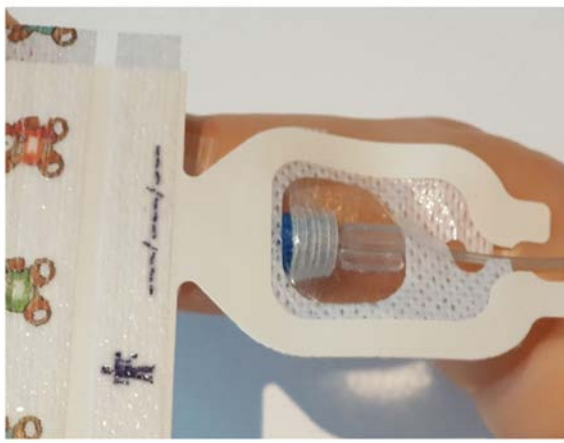
STEP 2: Loop and secure the line.



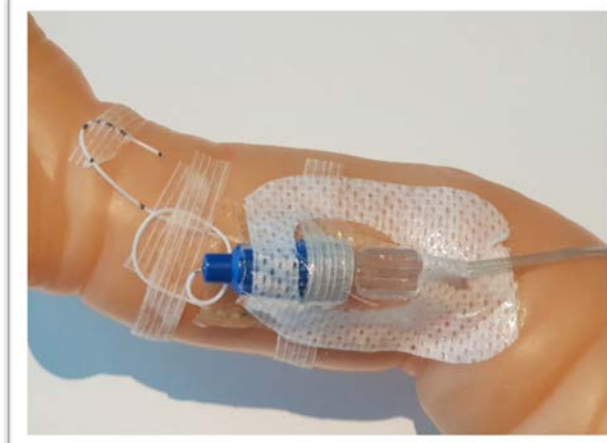
STEP 3: Cut small piece of duoderm.



STEP 4: Position hub on duoderm. Secure hub with steristrips.



STEP 5: Cover hub including 0.5cm of line with "teddy bear" tegaderm.



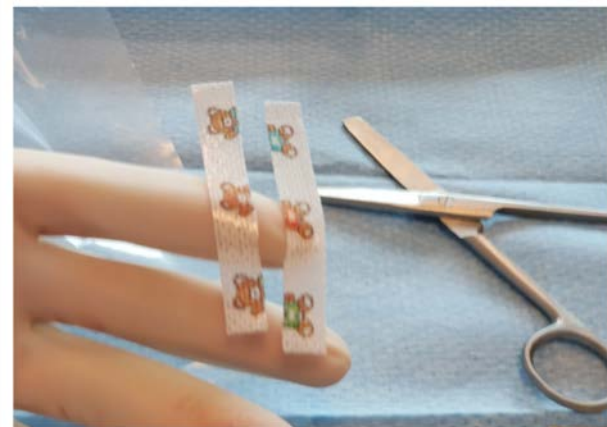
STEP 6: Remove backing paper and ensure the ends overlap.



STEP 7: Cover the insertion site with tegaderm ensuring that it is visible at all times.



STEP 8: Ensure that the entire longline including the hub is covered. Check that the edges don't overlap so as not to constrict the limb.



STEP 9: Cut the teddy bear steristrip in half with a sterile scissor.



STEP 10: Attach strip UNDER the line.



STEP 11: Attach 2nd strip OVER the line.



STEP 12: Secure the edges. Write the date of insertion.