

Nebuliser

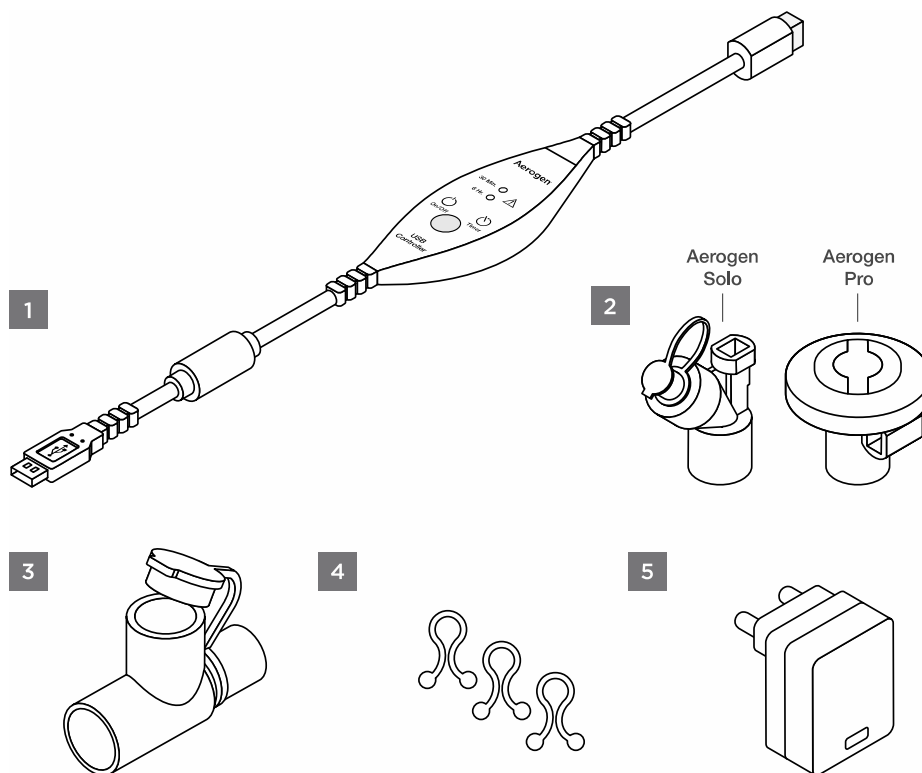
How do I give my child a nebuliser?

Your child may be recommended nebuliser therapy, including nebulised saline. Your health team will advise you of how and when this is appropriate.

There are a range of nebulisers that can be used. The easiest one is the Aerogen Solo nebuliser as it is quiet, can remain 'in' the circuit, can run on battery, and doesn't interrupt usual ventilator performance. Filters may need to be added to the circuit, however.

This is a quick guide on the use of the Aerogen nebuliser. See the manufacturer's user guide for full details and specifications.

Aerogen nebuliser – USB controller parts:

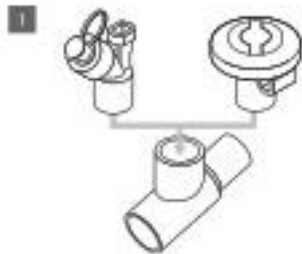


1. Aerogen USB controller powered by an AC adaptor (5) or USB battery.
2. Aerogen nebuliser (Aerogen Solo or Aerogen Pro)
3. T-piece and plug to connect to circuit. Additional adaptors may be needed.
4. Clips to tidy cable (if desired)
5. Aerogen USB controller AC/DC adaptor

How to set up the Aerogen nebuliser

Make sure you have tried out the nebuliser before you use it on your child.

1. Connect the Aerogen nebuliser by firmly pushing it into the T-piece.

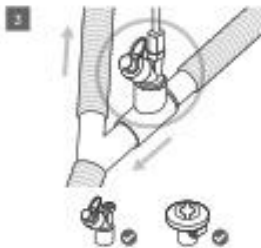


2. Connect the USB controller to the nebuliser as shown.

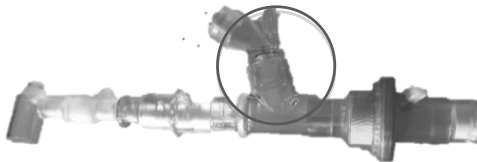


3. Insert the nebuliser and T-piece into the breathing circuit. There are several different points in the circuit this may be appropriate. The nebuliser can be left in place.

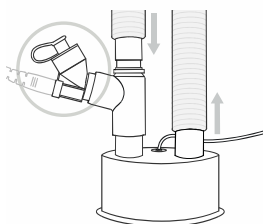
(a) Close to the child in a double-limb circuit (blue inspiratory limb just before Y-connector)



(b) Close to the child in a single-limb circuit (just after the HME filter).

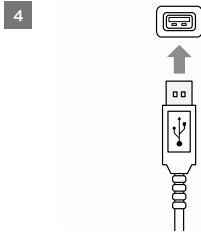


(c) Close to the heated humidifier in a single- or double-limb heated humidifier circuit (on the chamber in the dry side of the circuit - coming from the ventilator).

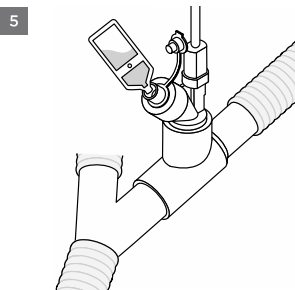


How to set up the Aerogen nebuliser

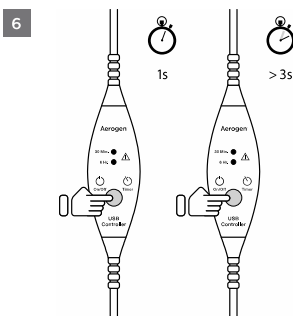
4. Connect the USB controller to a USB power port (AC adaptor or battery port).



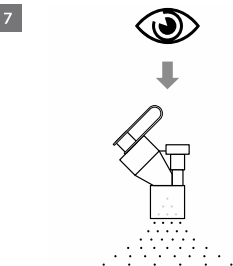
5. Open the plug on the nebuliser and use a pre-filled ampoule or syringe to add medication/saline to the nebuliser. Close the plug. Do not use a syringe with a needle.



6. To start the nebulisation, press the on/off button once for around 1 second. The nebuliser will operate for up to 30 minutes before stopping. (NB if you press it for more than 3 seconds, it will run for 6 hours).



7. Check the aerosol running – it should be visible in the circuit/nebuliser.



You can use cable clips to keep the cabling tidy.