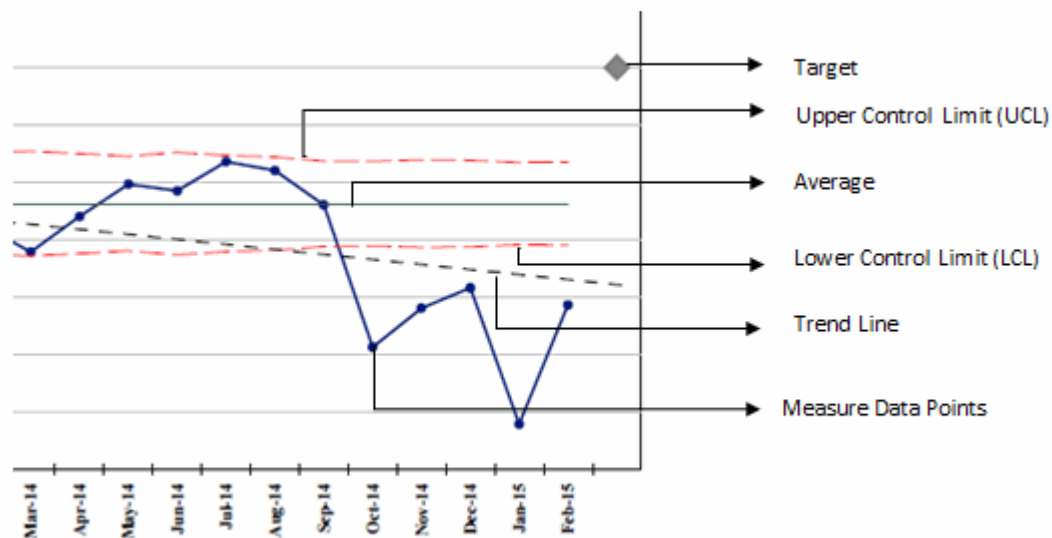


Auckland DHB

Child Health Clinical Excellence performance indicators for period ending December 2020

Understanding Control Charts

The following control charts plot process data in a time-ordered sequence to identify common cause and special cause variation.



- **Expected Variation Region**

The area between the lower and upper control limits (LCL and UCL), where the process is expected to perform. This is also known as common cause variation and refers to occurrences that contribute to the natural variation of any process.

- **Unexpected Variation Region**

The area beyond the control limits, also known as special cause variation. Special causes are unusual occurrences that are not normally (or intentionally) part of the process and create instability.

- **Charts without average and control limit lines indicate:**

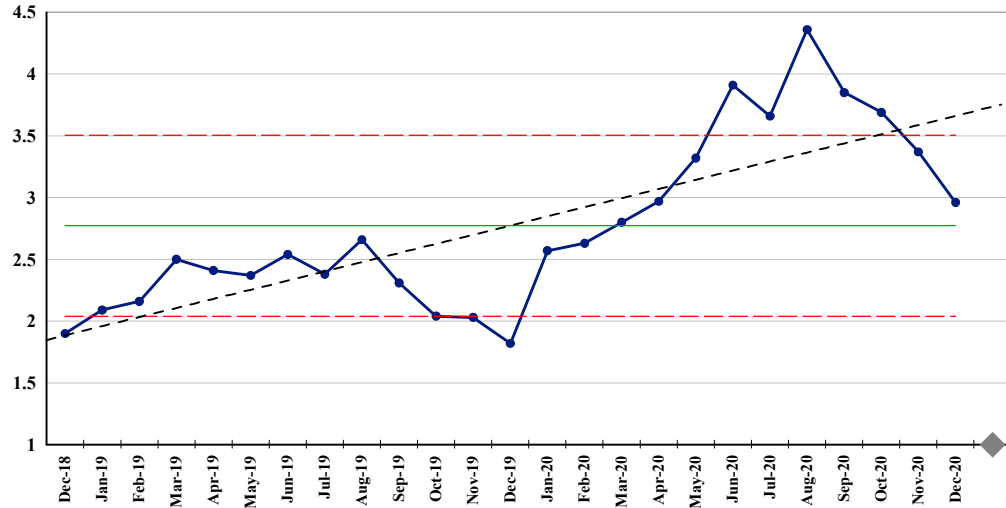
Metric value has manual data entry of percentage or rate value rather than numerator and denominator values. Percentage and rate control charts require numerator and denominator values in order to calculate average and control limits.

Auckland DHB

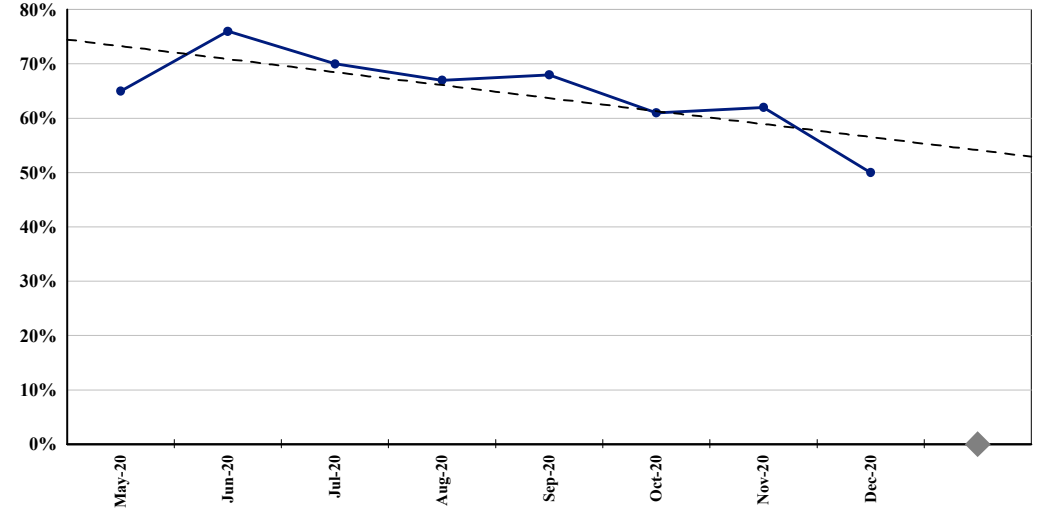
Child Health Clinical Excellence performance indicators for period ending December 2020

Safety

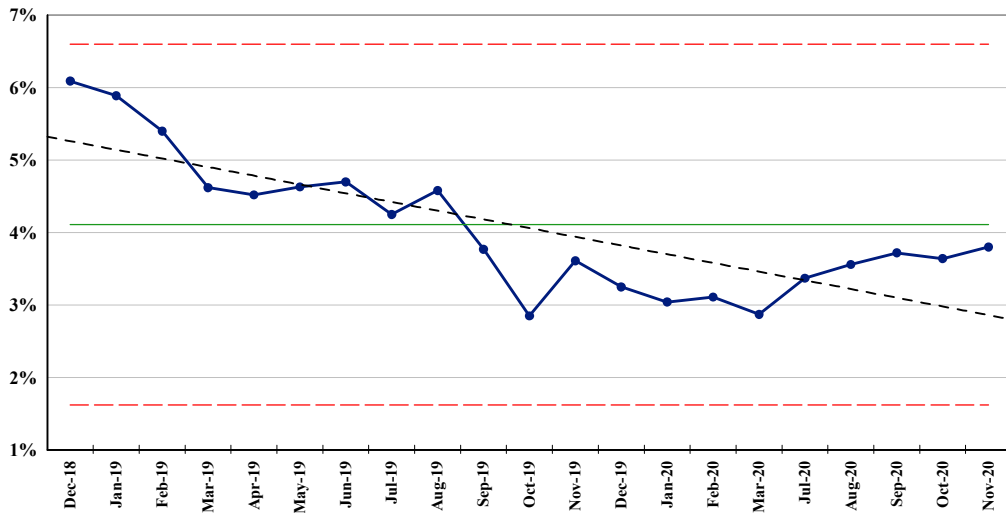
PR722. Central line associated bacteraemia rate per 1,000 central line days (rolling 6 month average)



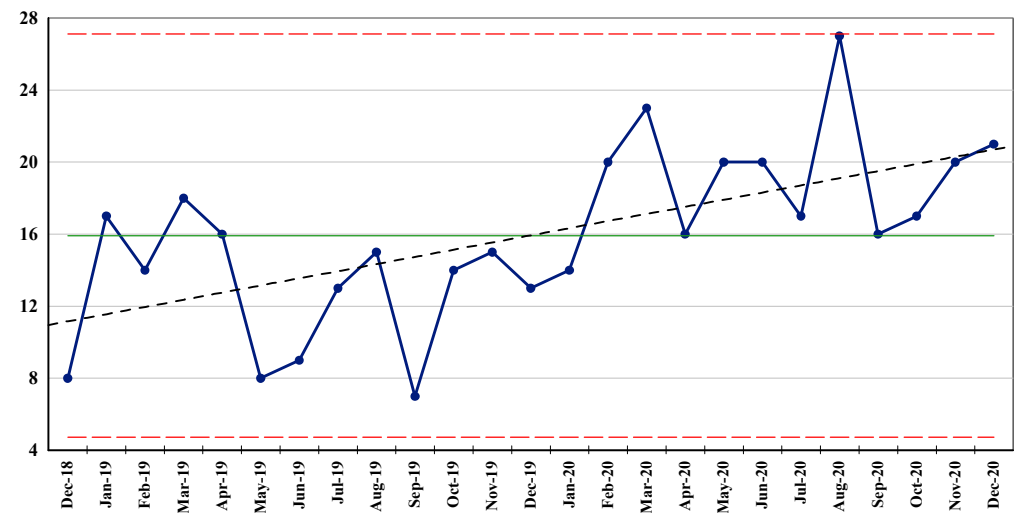
PR808. % Reported medication/fluid incidents that would be prevented by an electronic system



PR185. Nosocomial pressure injury point prevalence - 12 month average (% of in-patients)



PR334. Good Catches

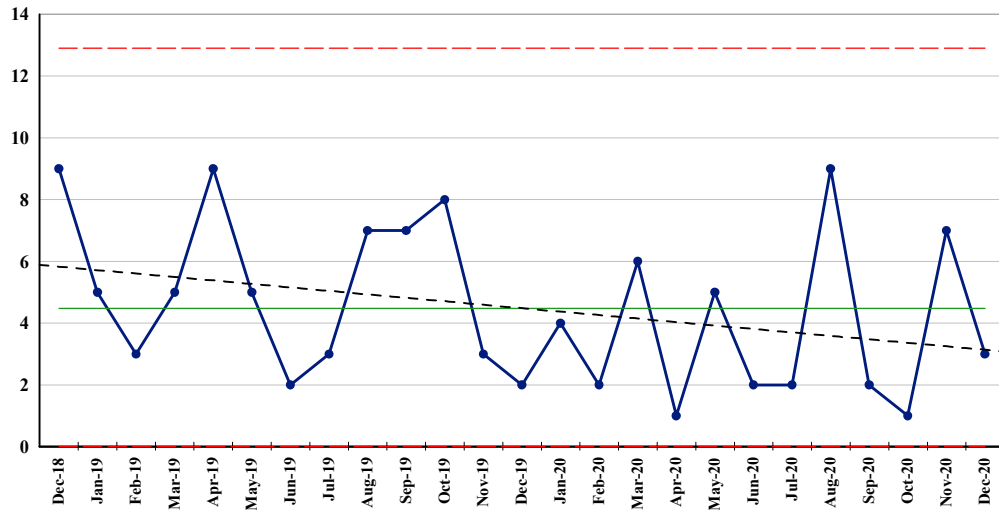


Auckland DHB

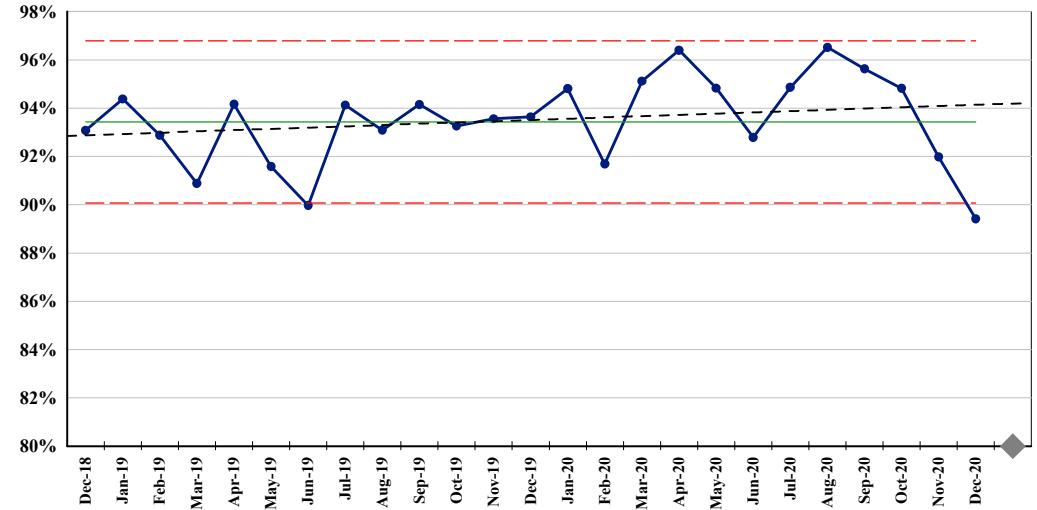
Child Health Clinical Excellence performance indicators for period ending December 2020

Safety

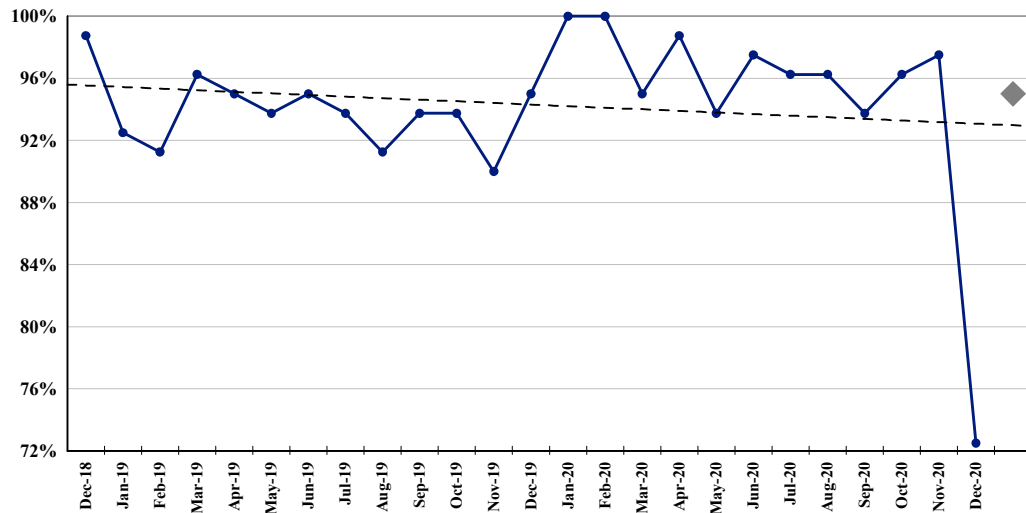
PR335. Paediatric Code Blue Calls



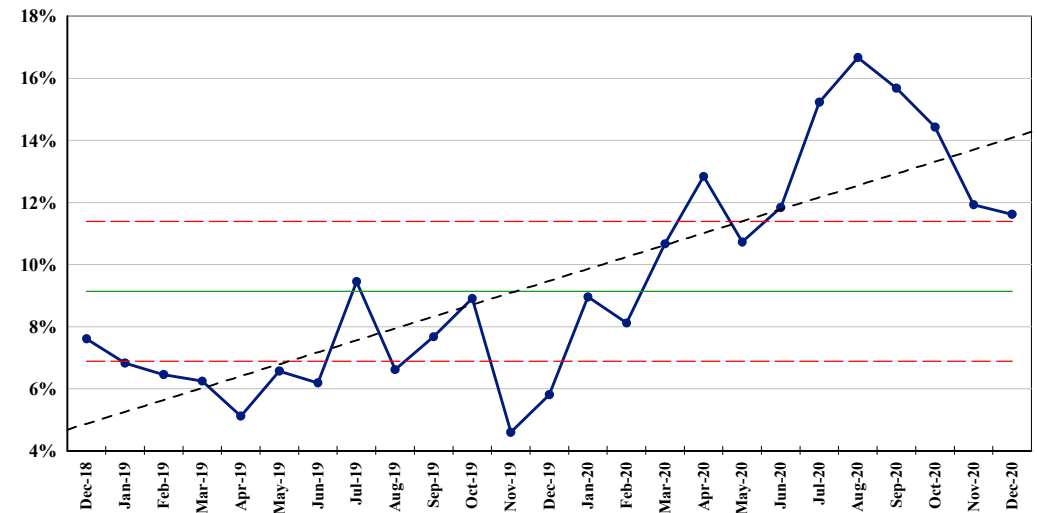
PR195. % Hand hygiene compliance



PR355. % PEWS score documented



PR483. % Family Violence Screening compliance

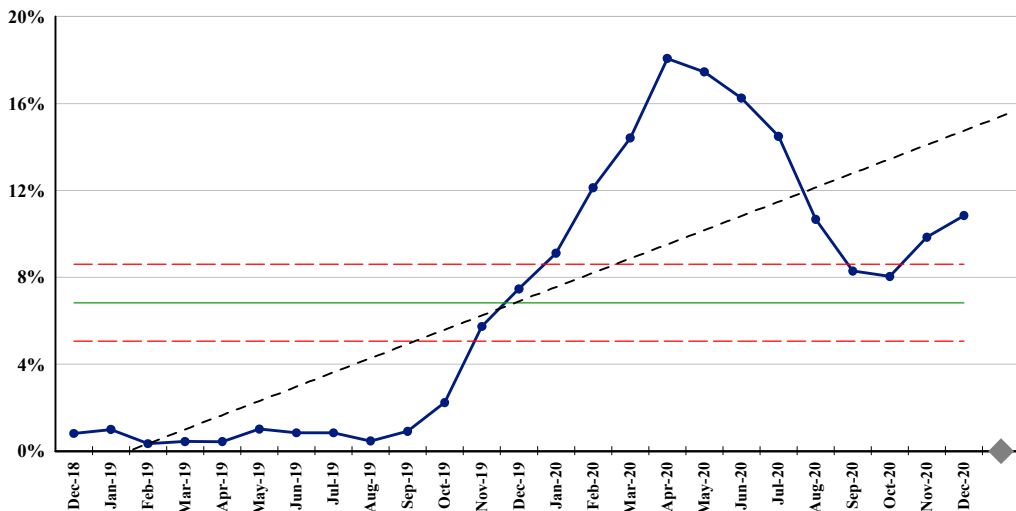


Auckland DHB

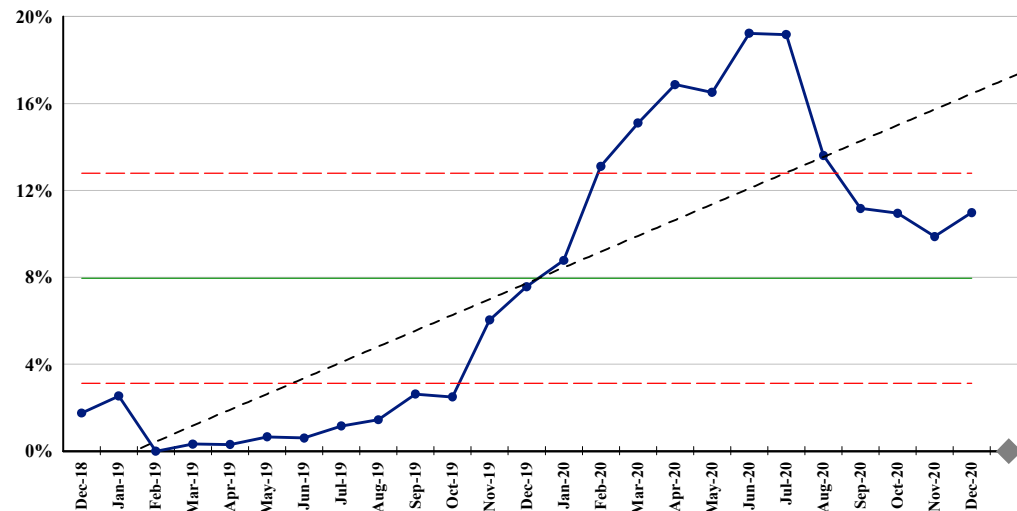
Child Health Clinical Excellence performance indicators for period ending December 2020

Timeliness

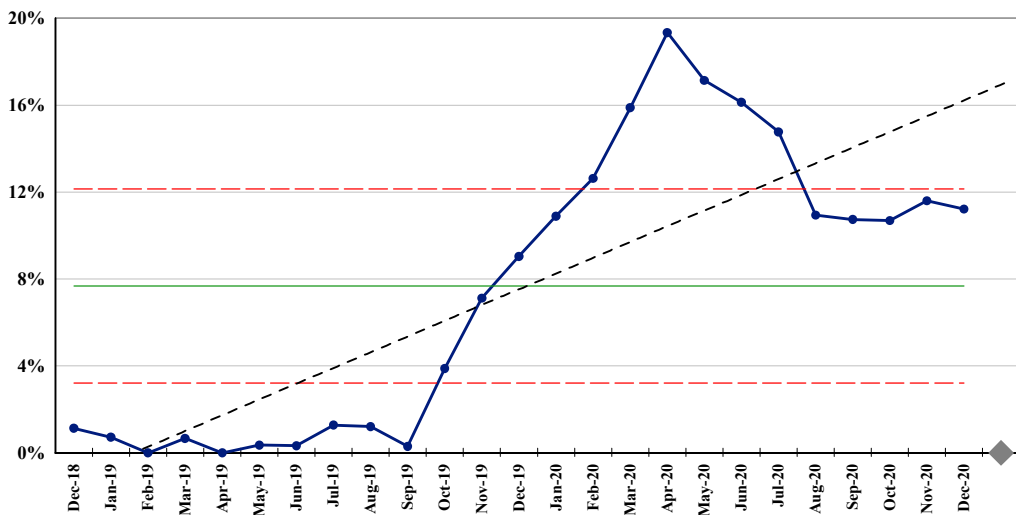
PR038. (ESPI-2) Patients waiting longer than 4 months for their FSA



PR811. (ESPI-2) Patients waiting longer than 4 months for their FSA - Maori



PR812. (ESPI-2) Patients waiting longer than 4 months for their FSA - Pacific people

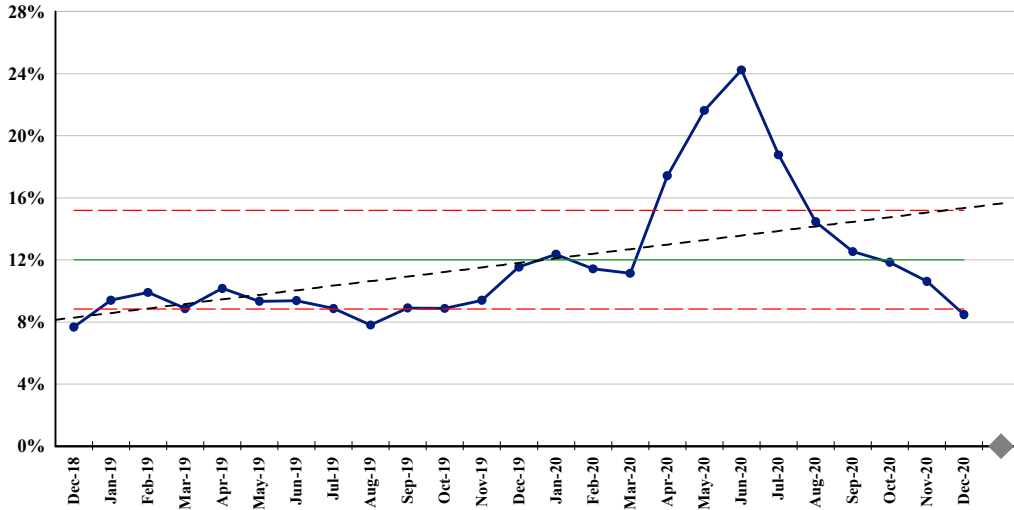


Auckland DHB

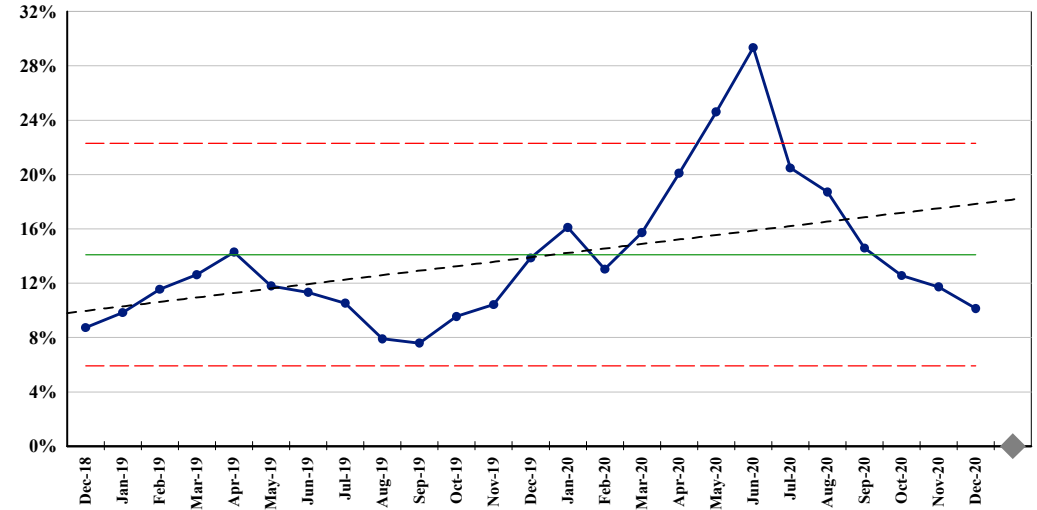
Child Health Clinical Excellence performance indicators for period ending December 2020

Timeliness

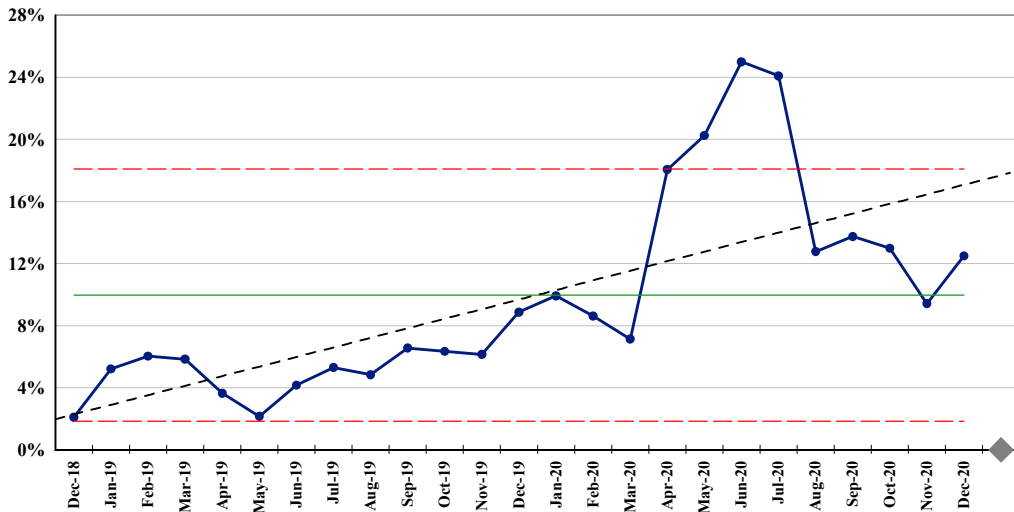
PR039. (ESPI-5) Patients given a commitment to treatment but not treated within 4 months



PR813. (ESPI-5) Patients given a commitment to treatment but not treated within 4 months - Maori



PR814. (ESPI-5) Patients given a commitment to treatment but not treated within 4 months - Pacific people

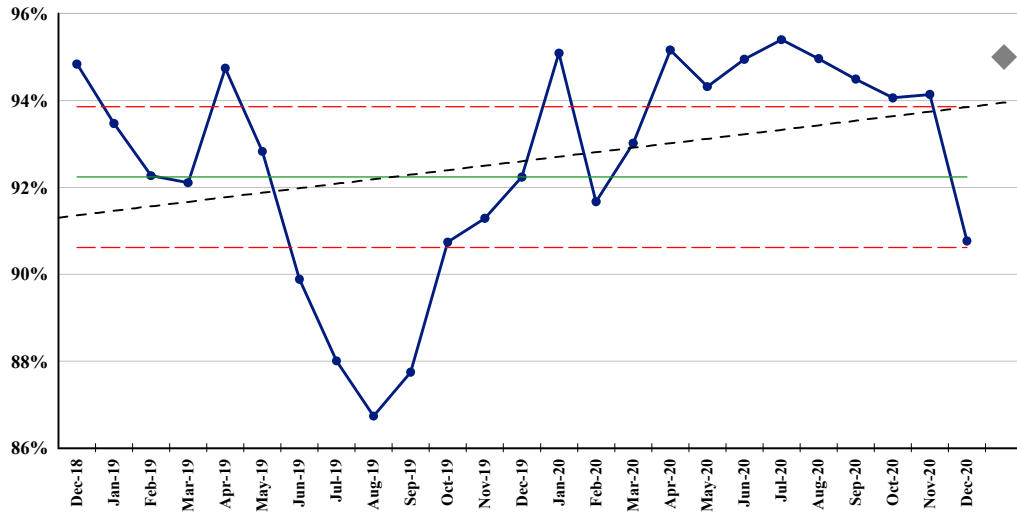


Auckland DHB

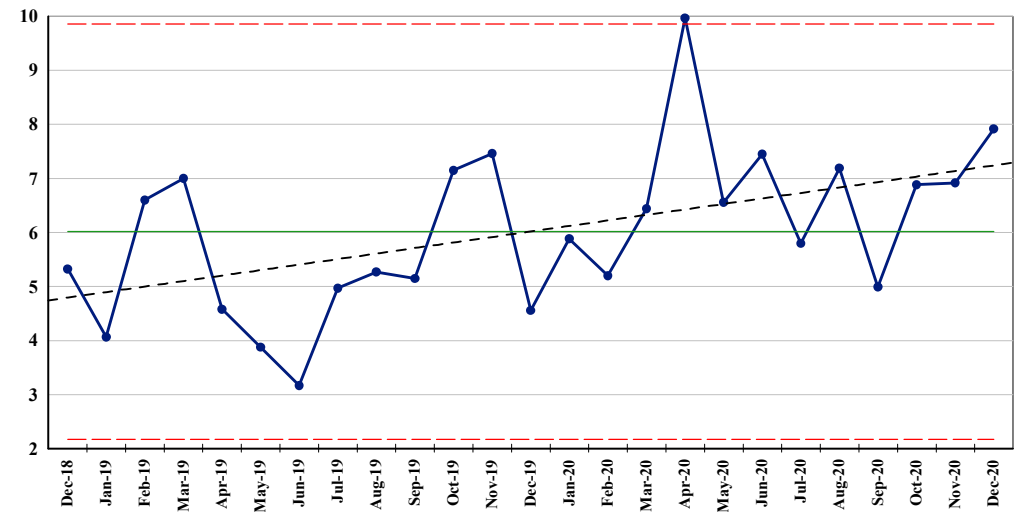
Child Health Clinical Excellence performance indicators for period ending December 2020

Timeliness

PR016. (MOH-01) % CED patients with ED stay < 6 hours



PR034. Median acute time to theatre (decimal hours) - Starship

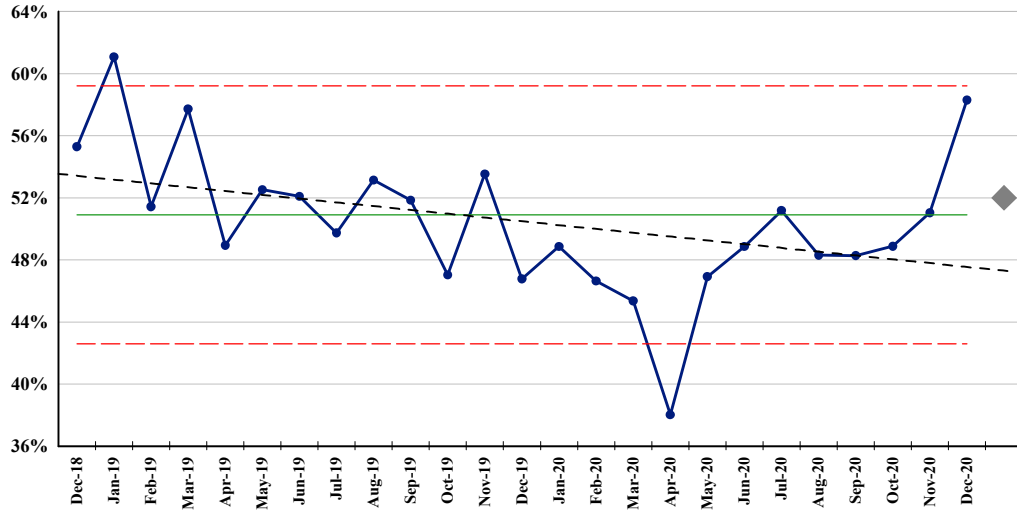


Auckland DHB

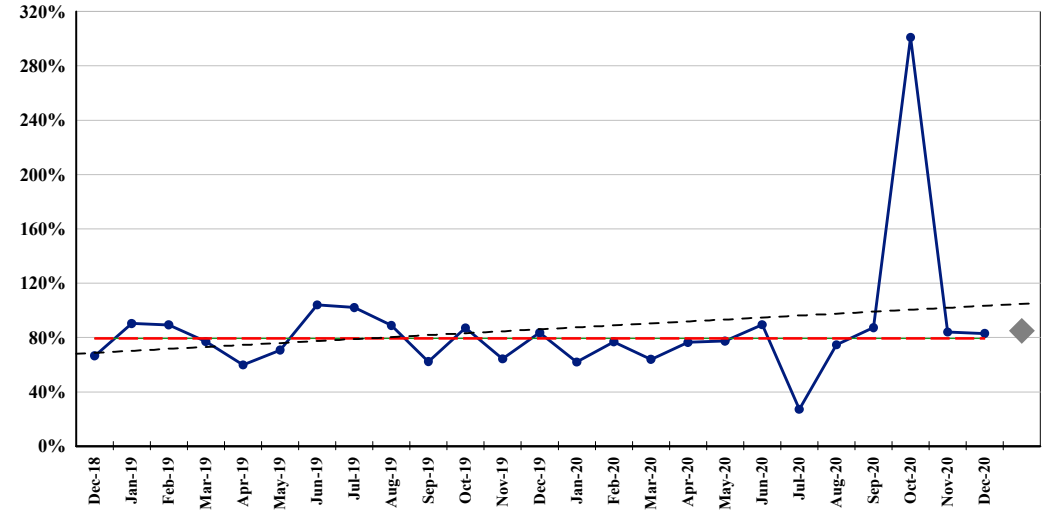
Child Health Clinical Excellence performance indicators for period ending December 2020

Efficiency

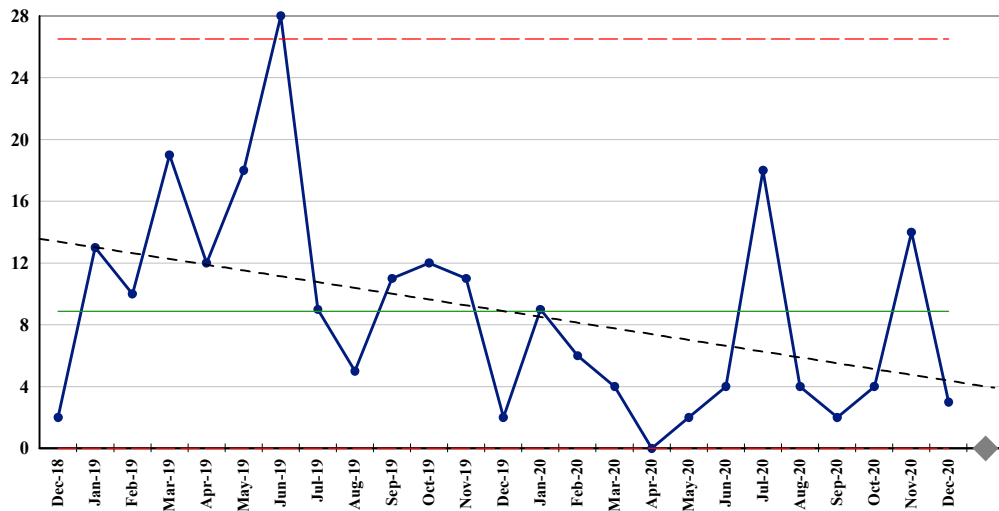
PR052. % Day Surgery Rate



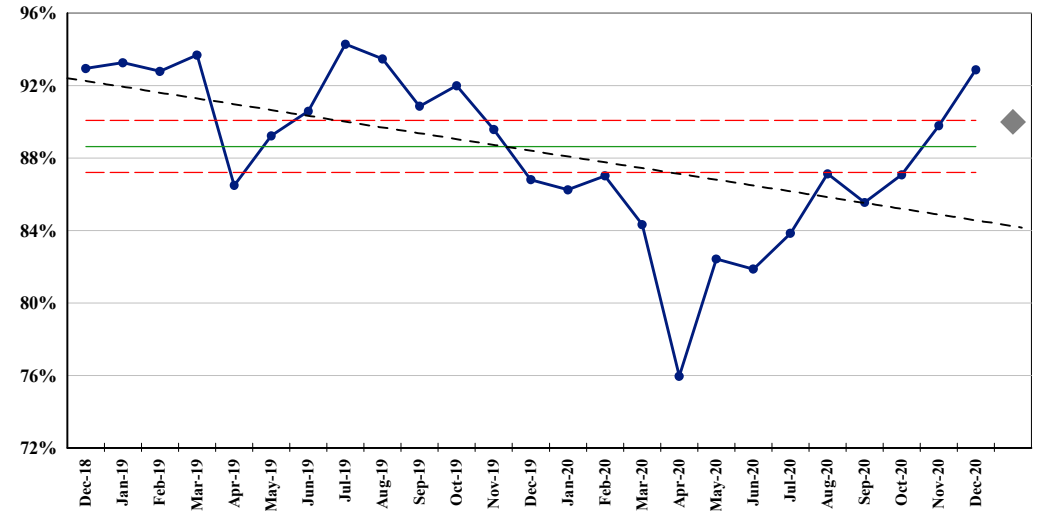
PR198. % Adjusted Session Theatre Utilisation



PR333. PICU Exit Blocks



PR444. Average Occupancy

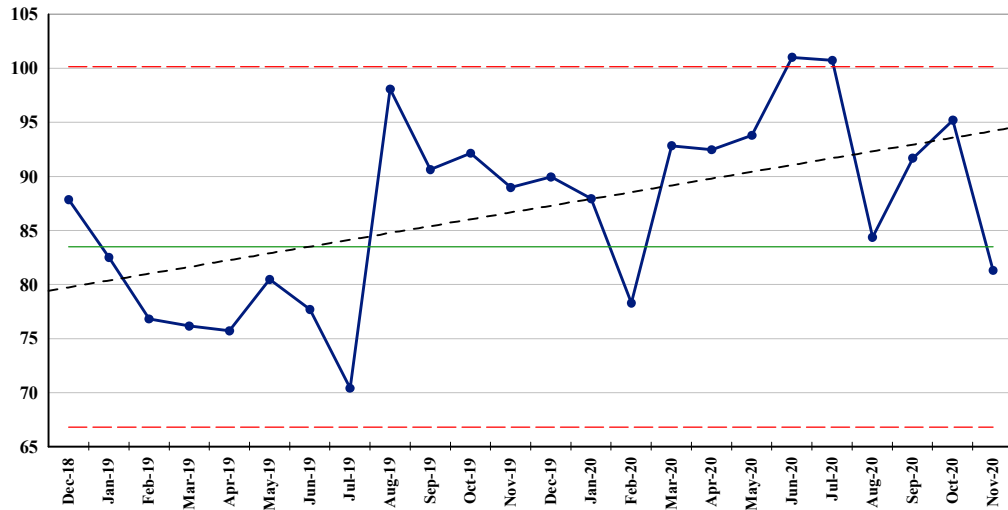


Auckland DHB

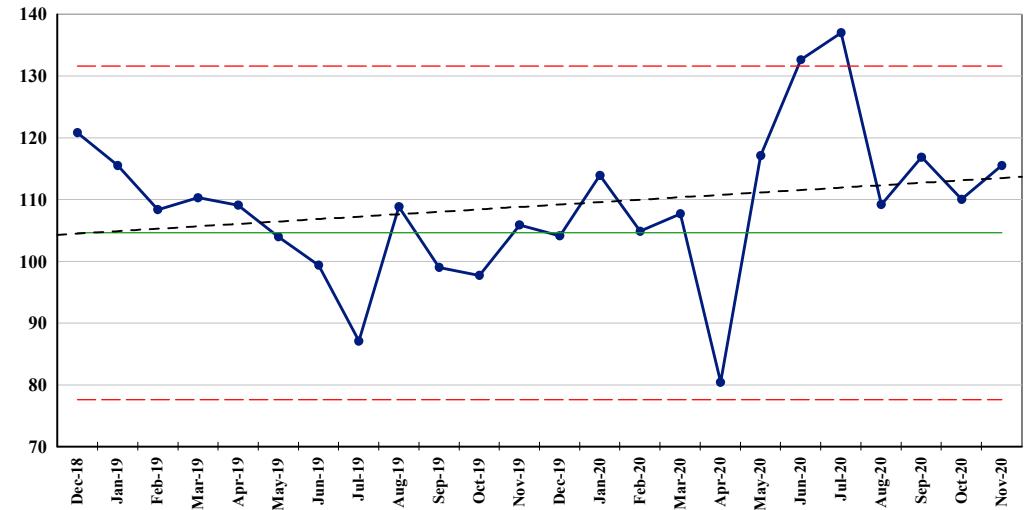
Child Health Clinical Excellence performance indicators for period ending December 2020

Efficiency

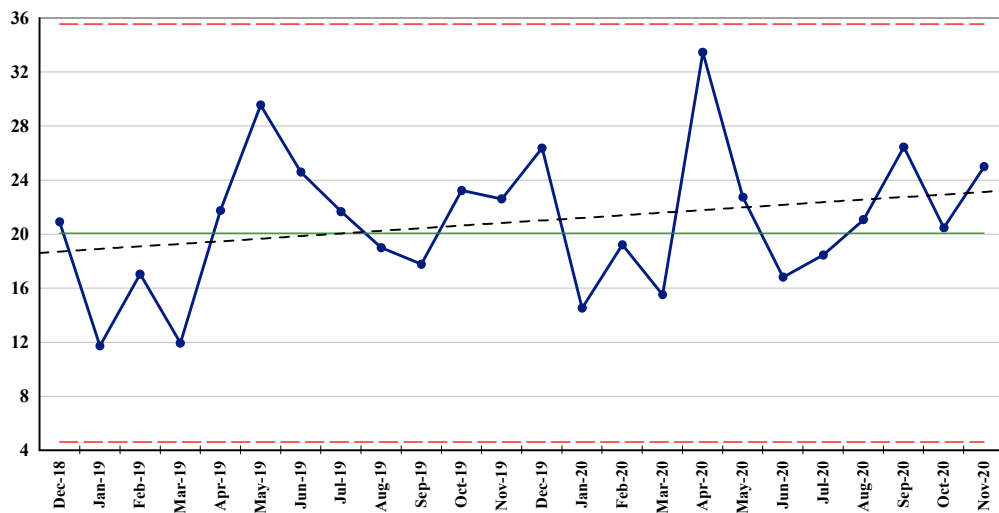
PR441. Laboratory cost per bed day (\$) - Child Health



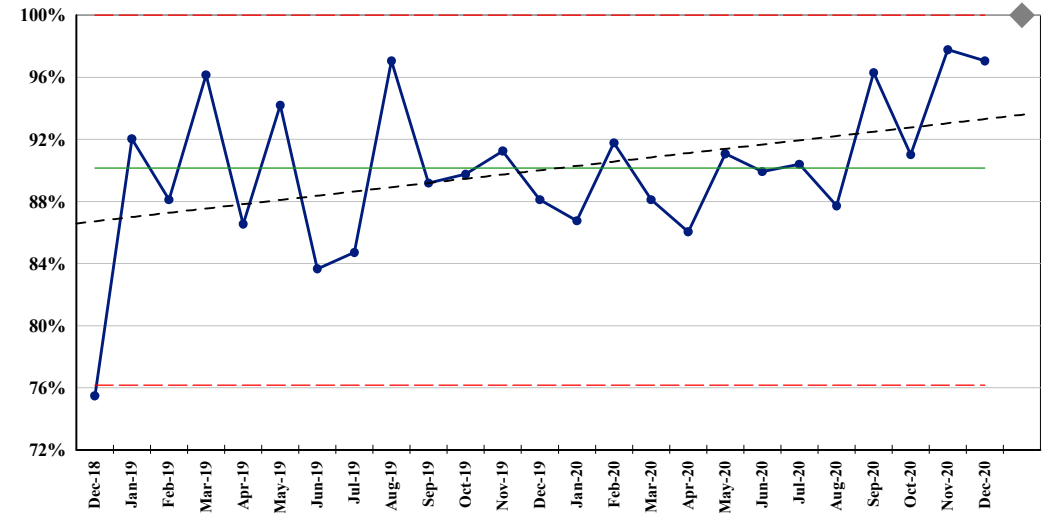
PR442. Radiology cost per bed day (\$) - Child Health



PR443. Antibiotic cost per bed day (\$) - Child Health



PR719. % adherence with antimicrobial guidelines

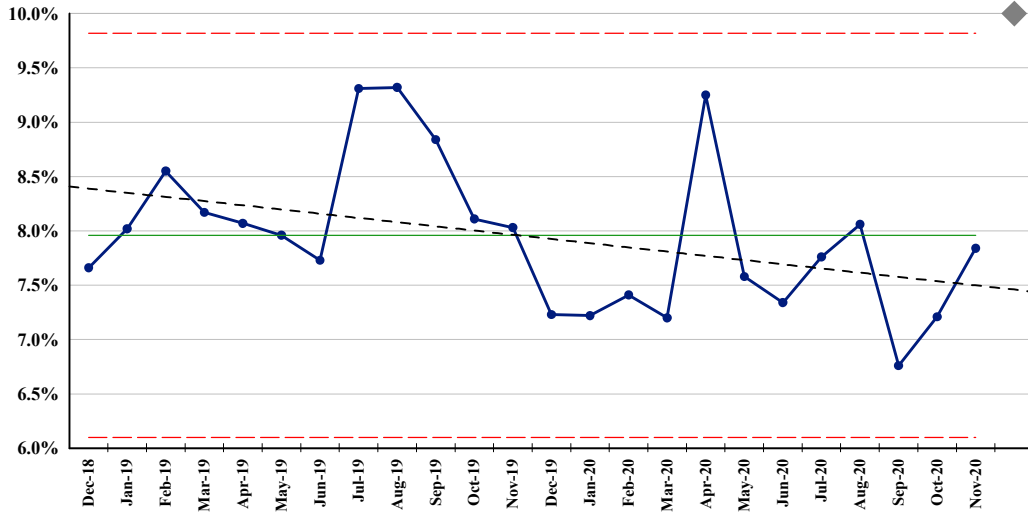


Auckland DHB

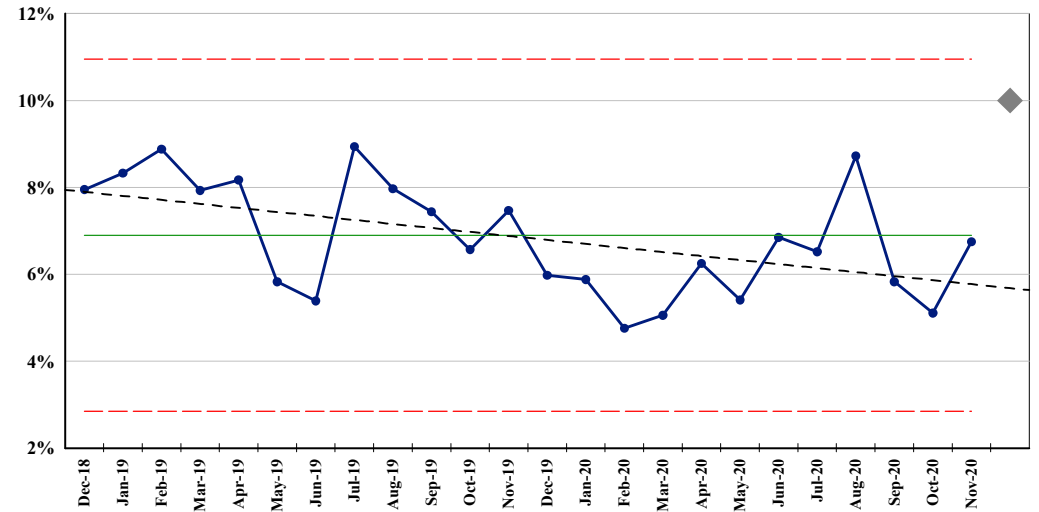
Child Health Clinical Excellence performance indicators for period ending December 2020

Effectiveness

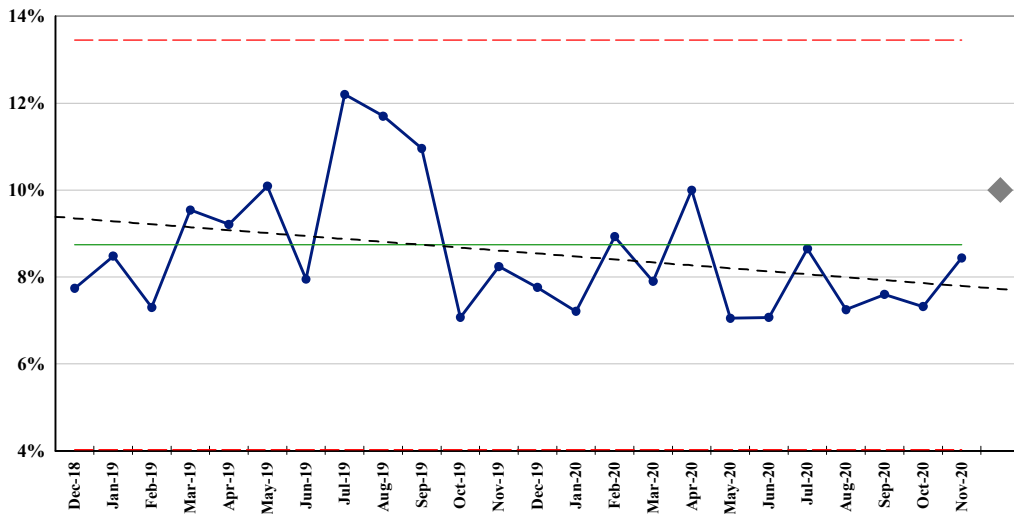
PR713. 28 Day Readmission Rate – all DHBs – Total



PR714. 28 Day Readmission Rate – all DHBs – Maori



PR715. 28 Day Readmission Rate – all DHBs – Pacific

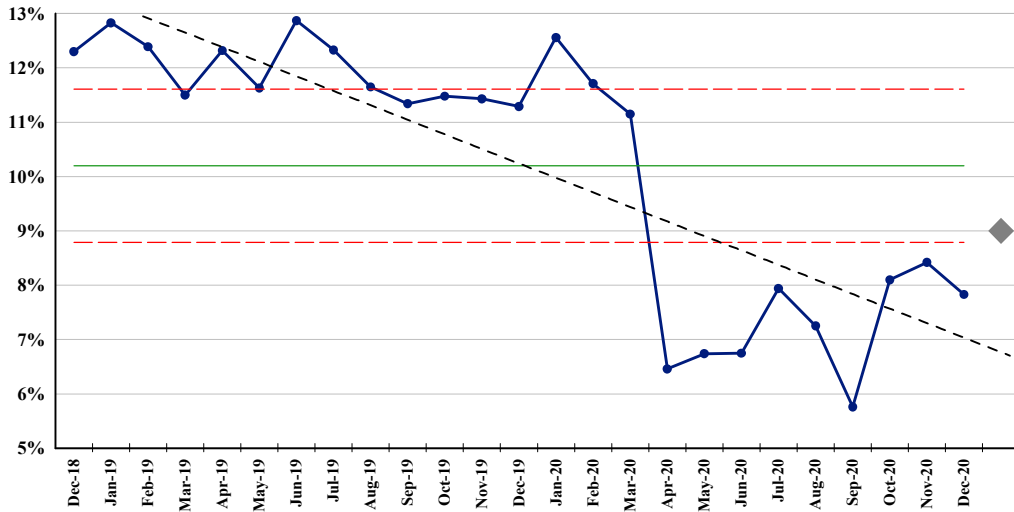


Auckland DHB

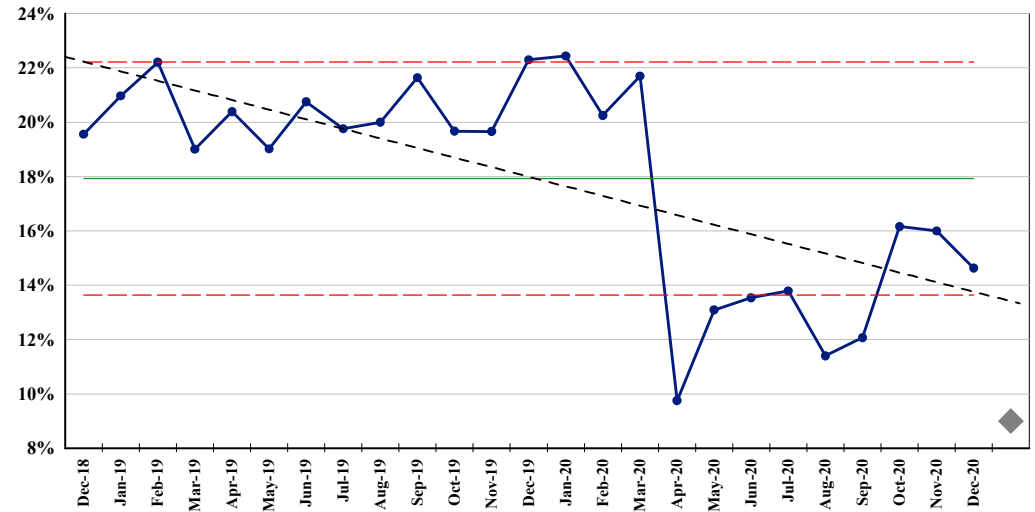
Child Health Clinical Excellence performance indicators for period ending December 2020

Patient Centred

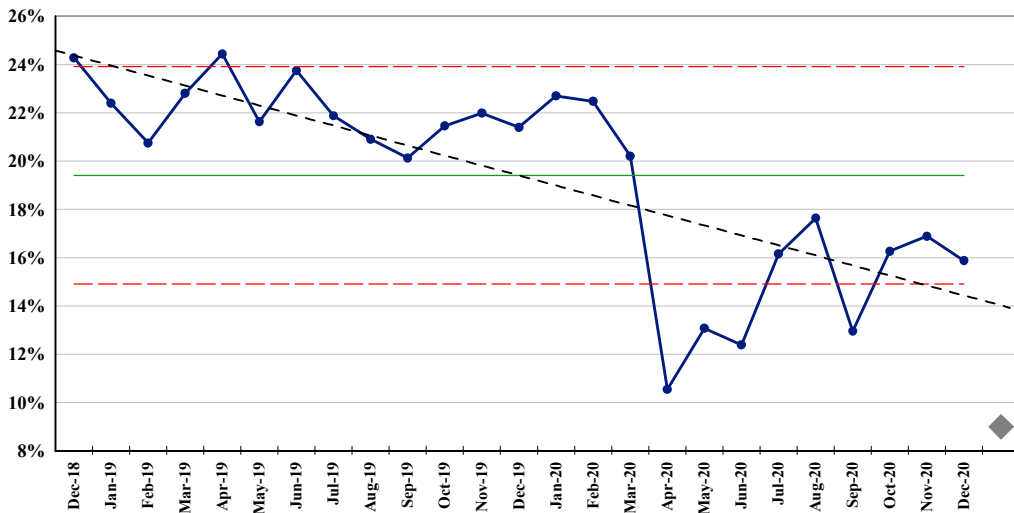
PR056. % WNB rate for outpatient appointments - All Ethnicities



PR057. % WNB rate for outpatient appointments - Maori



PR058. % WNB rate for outpatient appointments - Pacific

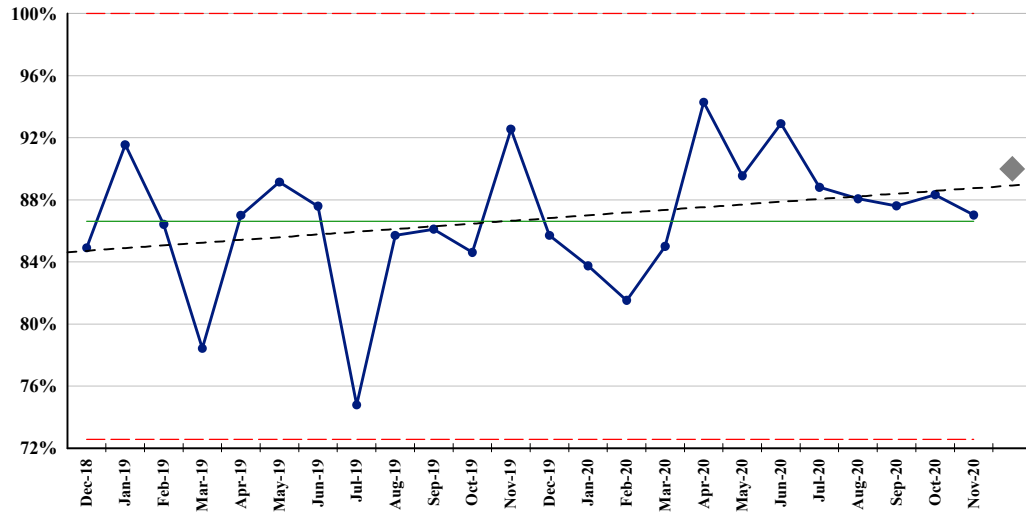


Auckland DHB

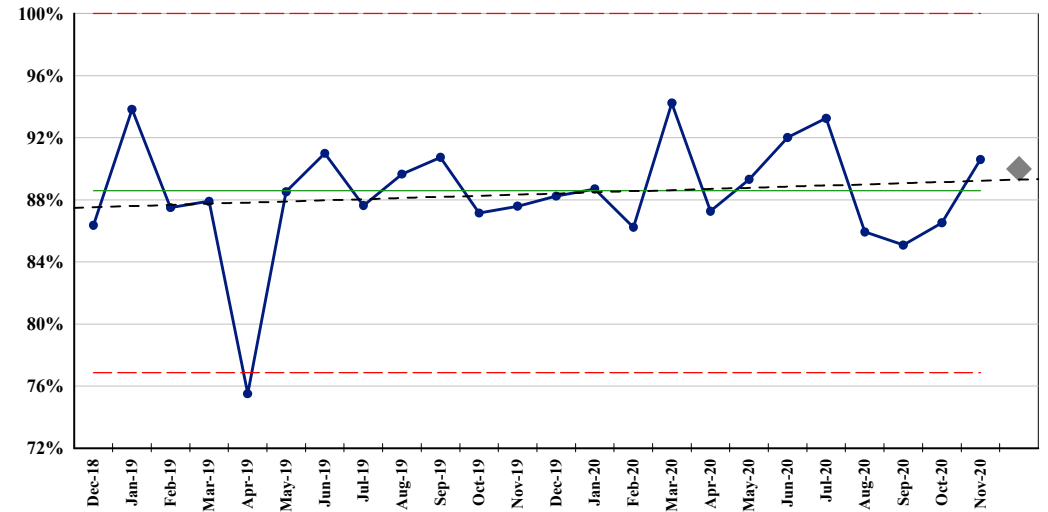
Child Health Clinical Excellence performance indicators for period ending December 2020

Patient Centred

PR154. % Very good and excellent ratings for overall inpatient experience



PR179. % Very good and excellent ratings for overall outpatient experience



PR493. % Very good and excellent ratings for coordination of care after discharge

