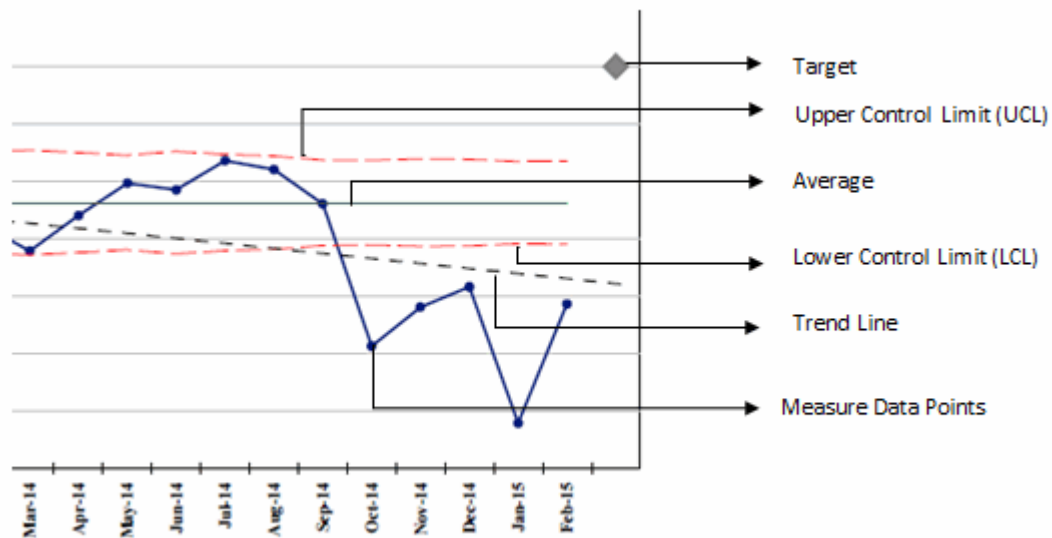


Auckland DHB

Child Health Clinical Excellence performance indicators for period ending September 2020

Understanding Control Charts

The following control charts plot process data in a time-ordered sequence to identify common cause and special cause variation.



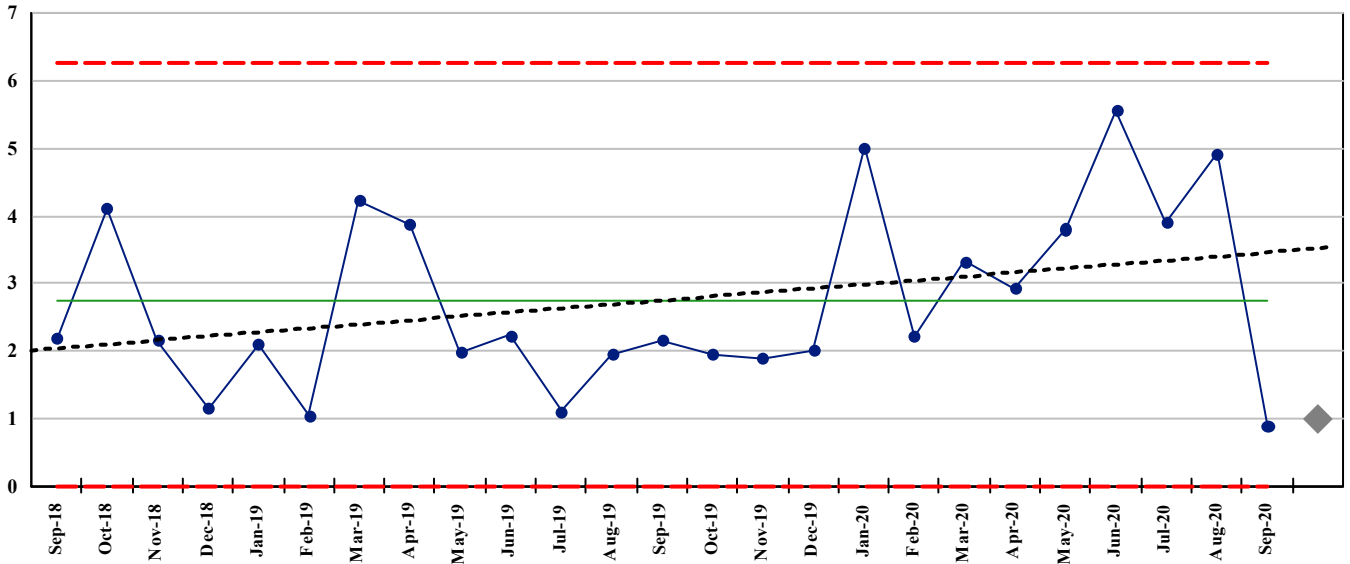
- Expected Variation Region**
 The area between the lower and upper control limits (LCL and UCL), where the process is expected to perform. This is also known as common cause variation and refers to occurrences that contribute to the natural variation of any process.
- Unexpected Variation Region**
 The area beyond the control limits, also known as special cause variation. Special causes are unusual occurrences that are not normally (or intentionally) part of the process and create instability.
- Charts without average and control limit lines indicate:**
 Metric value has manual data entry of percentage or rate value rather than numerator and denominator values. Percentage and rate control charts require numerator and denominator values in order to calculate average and control limits.

Auckland DHB

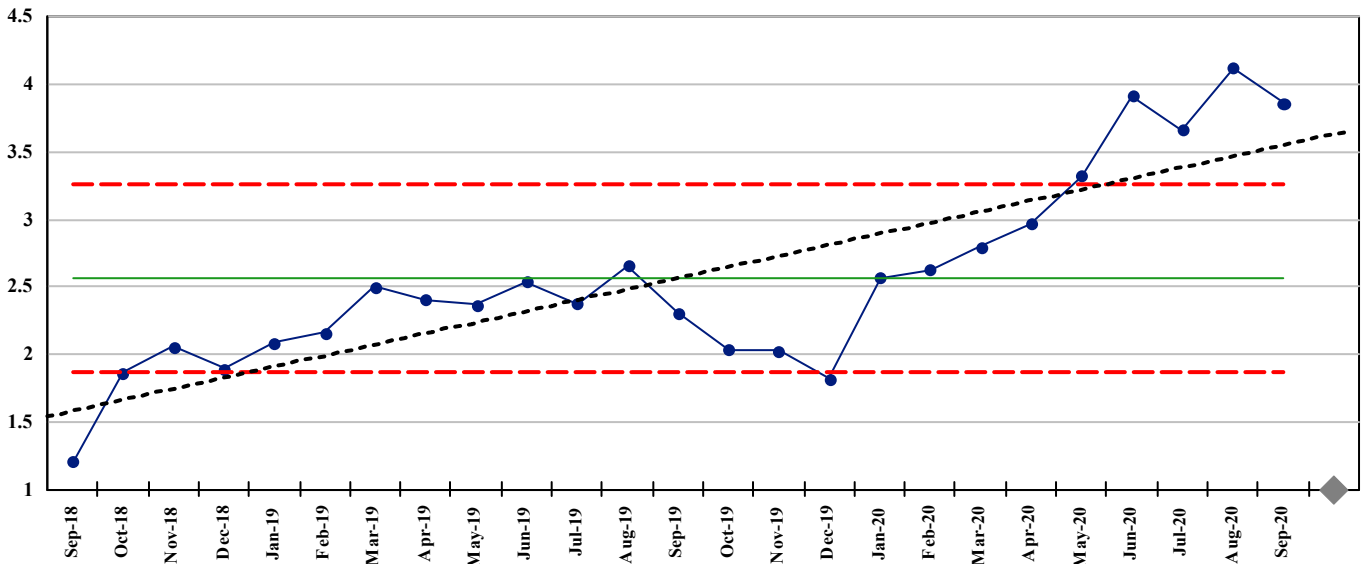
Child Health Clinical Excellence performance indicators for period ending September 2020

Safety

PR087. Central line associated bacteraemia rate per 1,000 central line days



PR722. Central line associated bacteraemia rate per 1,000 central line days (rolling 6 month average)

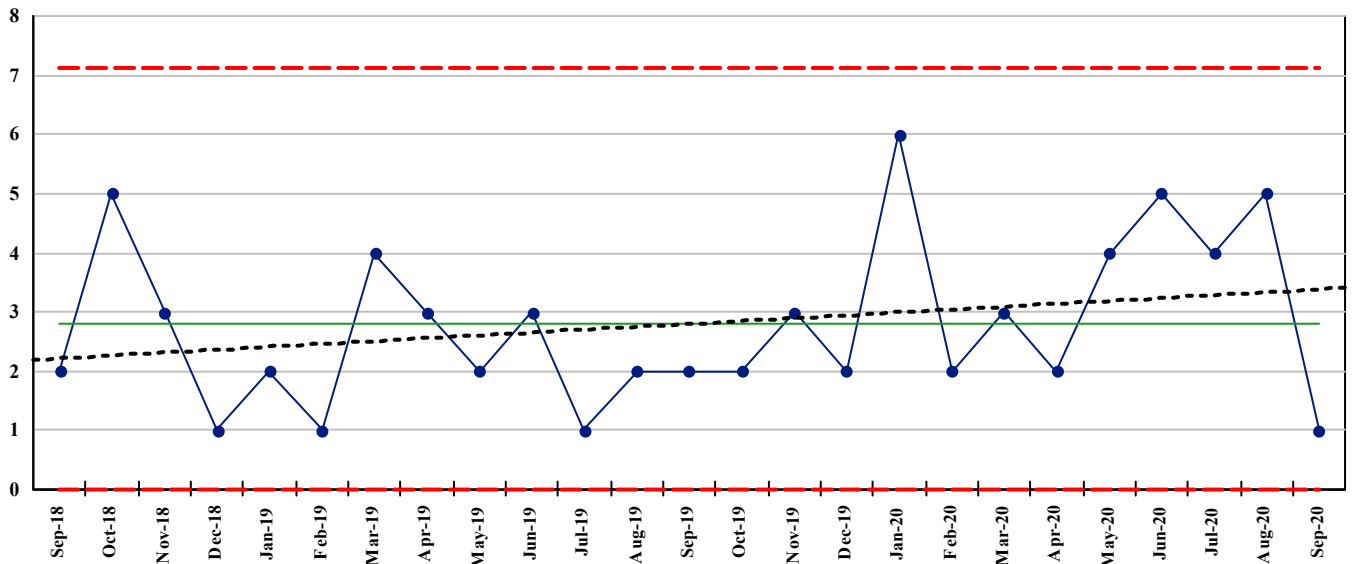


Auckland DHB

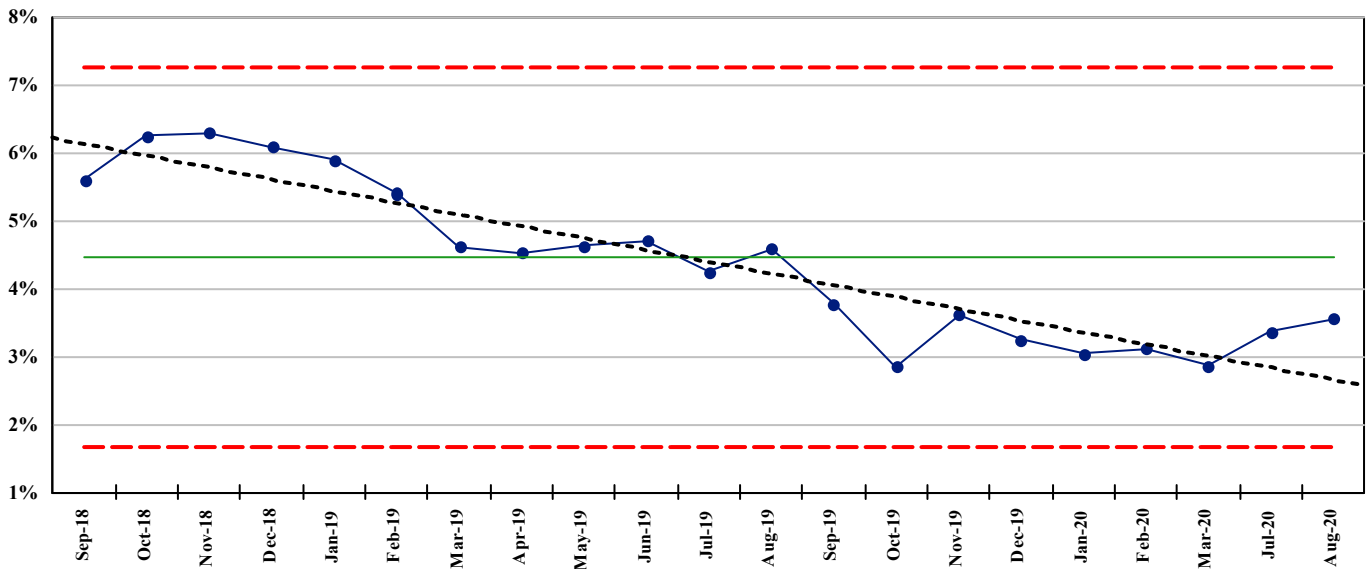
Child Health Clinical Excellence performance indicators for period ending September 2020

Safety

PR600. Number of Central line associated bacteraemia reported



PR185. Nosocomial pressure injury point prevalence - 12 month average (% of in-patients)

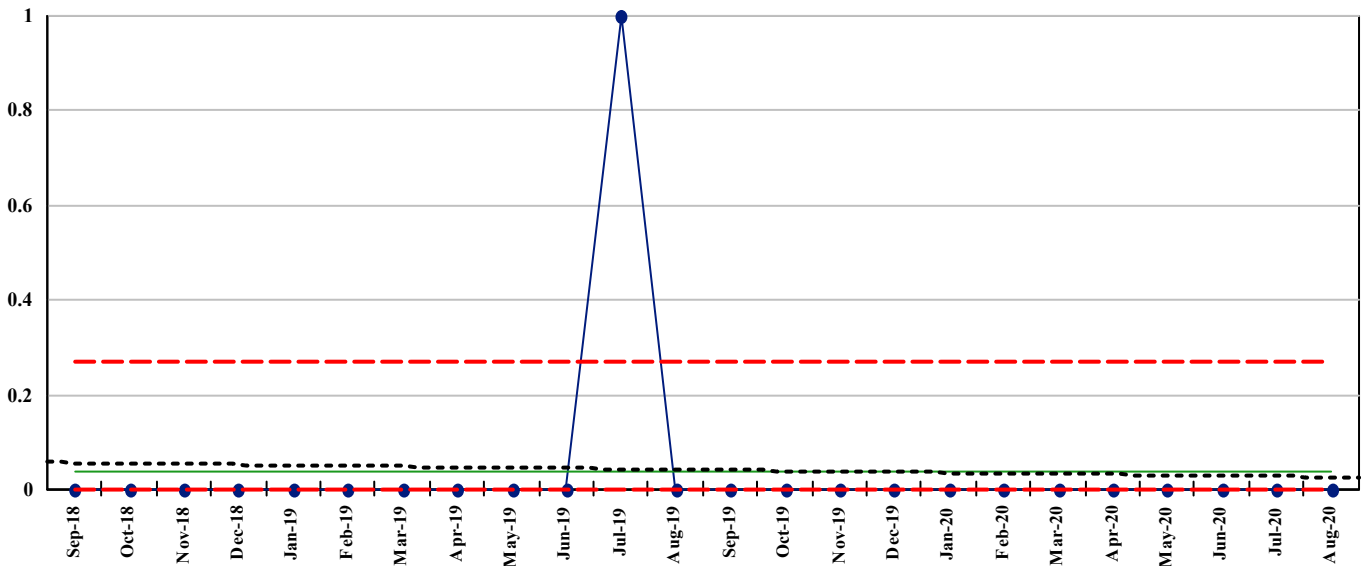


Auckland DHB

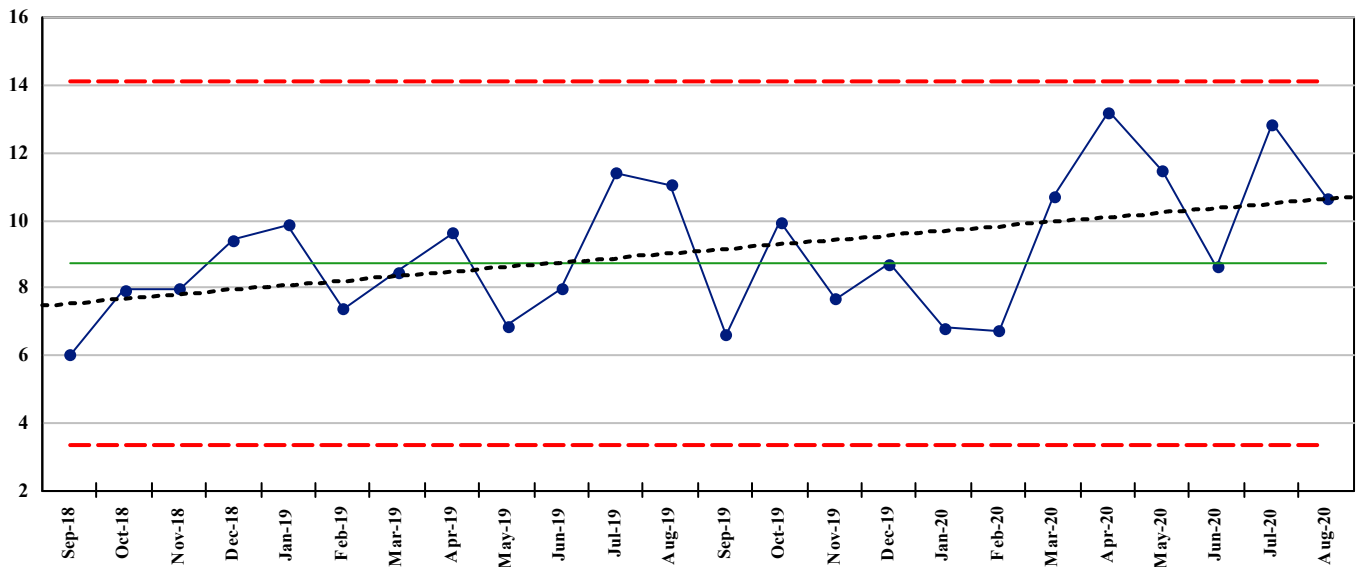
Child Health Clinical Excellence performance indicators for period ending September 2020

Safety

PR486. Reported Medication/Fluid Incidents causing moderate/severe harm



PR415. Reported Medication/Fluid Incident rate reported per 1,000 bed days

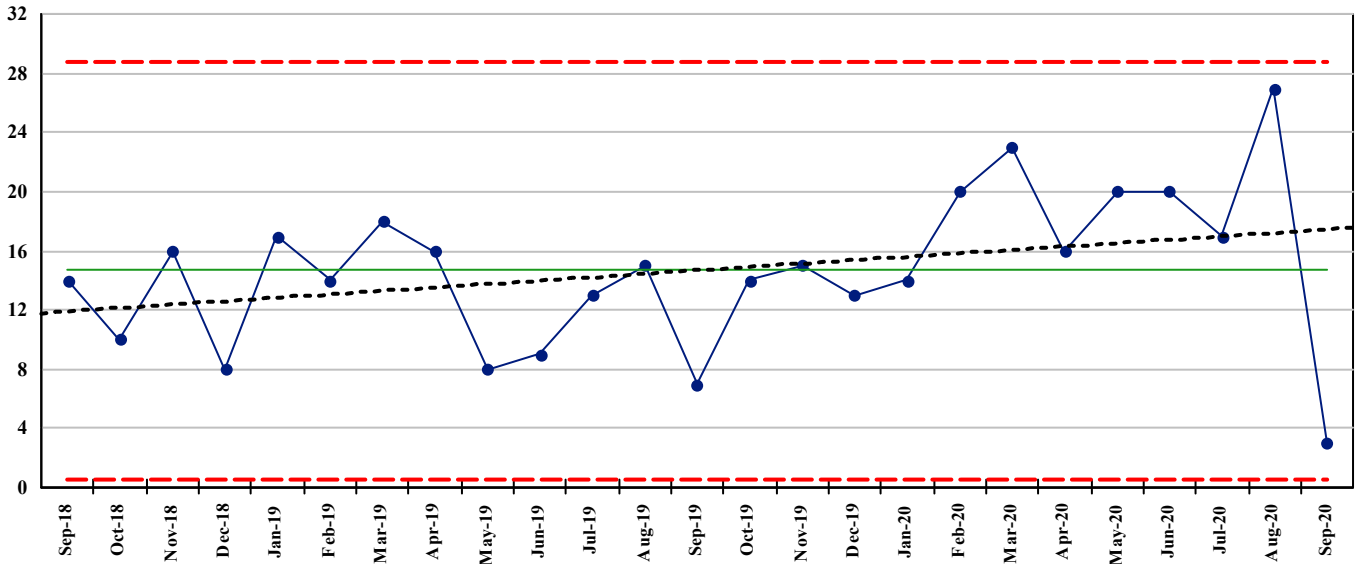


Auckland DHB

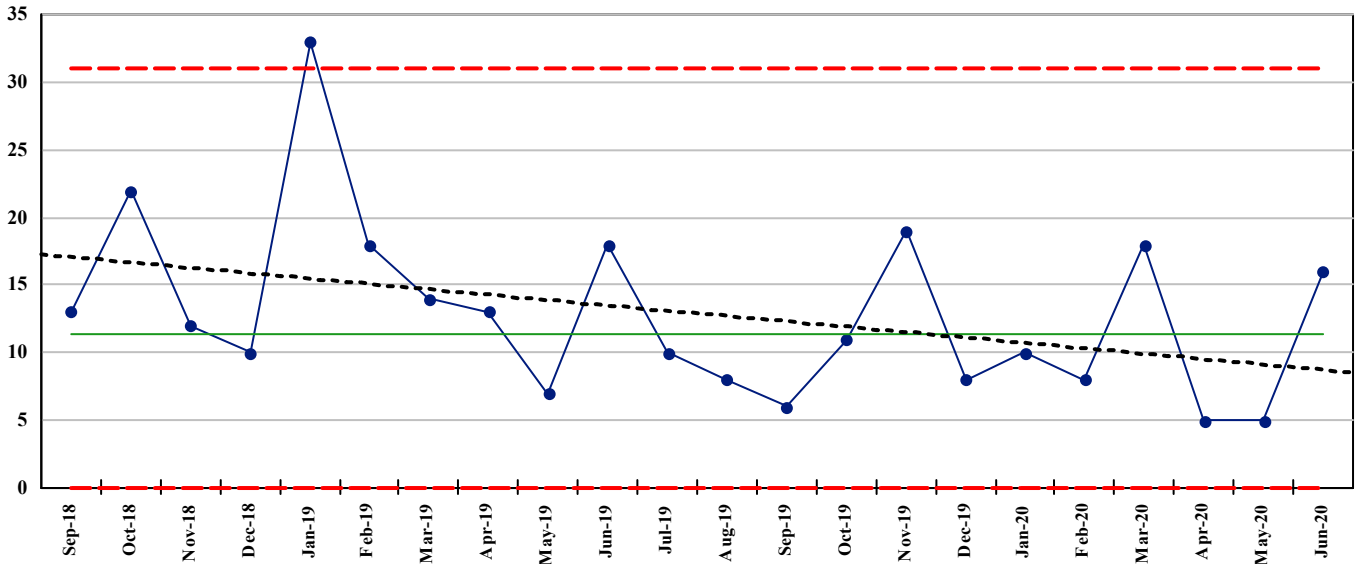
Child Health Clinical Excellence performance indicators for period ending September 2020

Safety

PR334. Good Catches



PR718. Good Catches - Service level

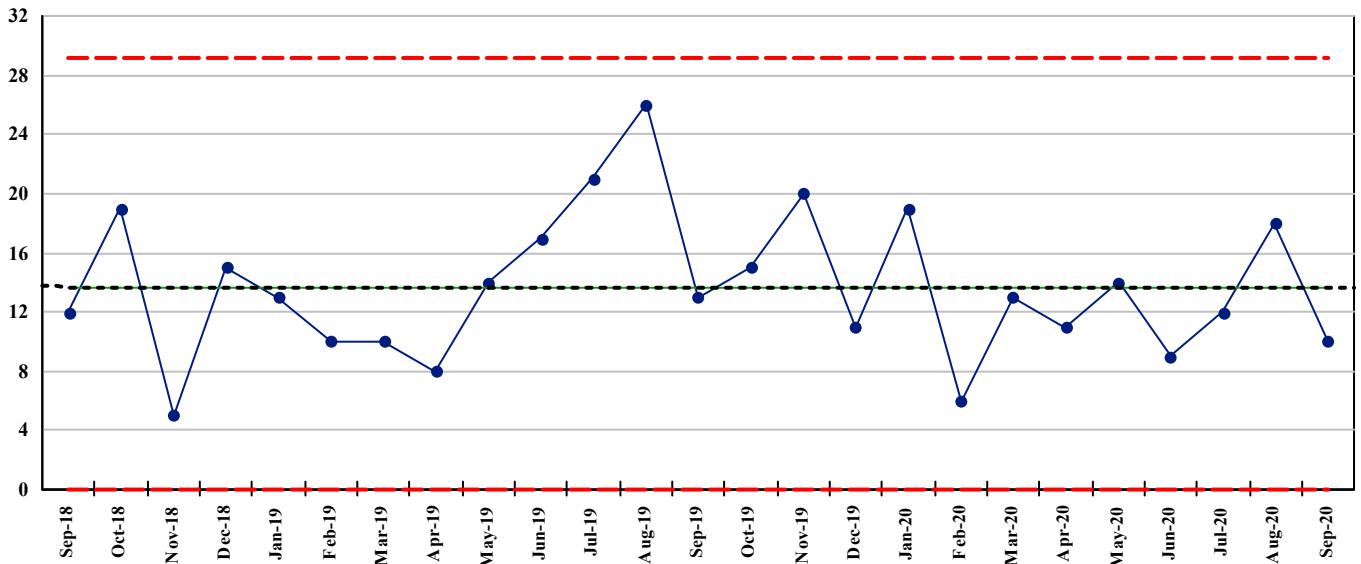


Auckland DHB

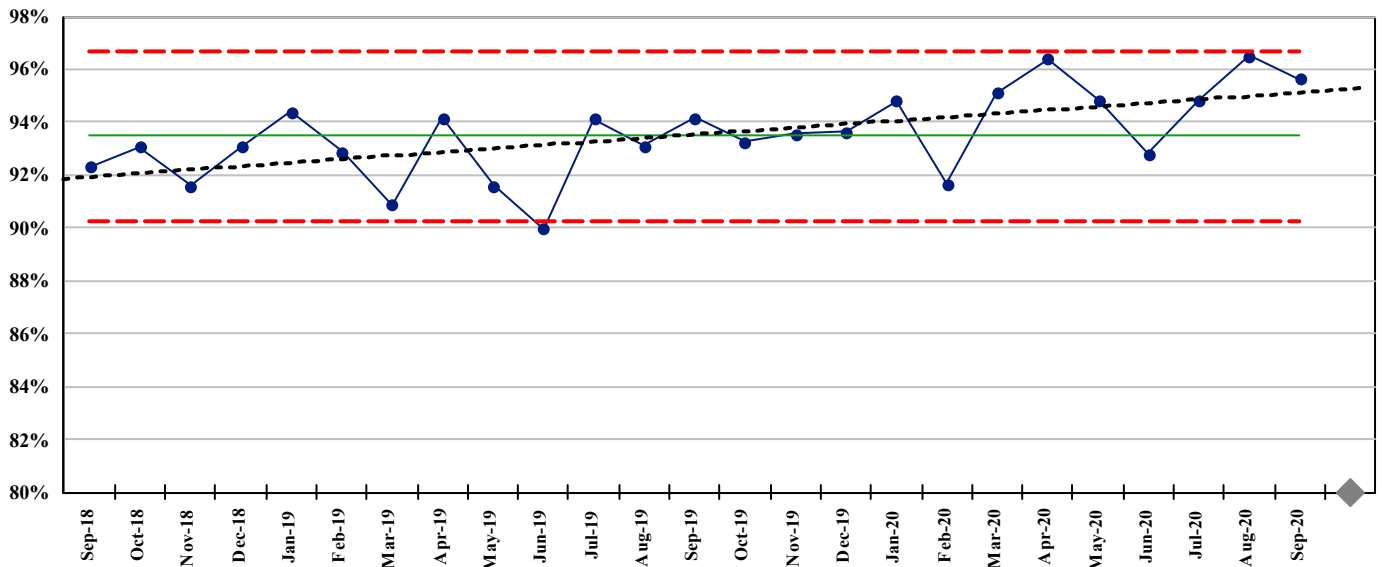
Child Health Clinical Excellence performance indicators for period ending September 2020

Safety

PR374. Unexpected PICU admissions



PR195. % Hand hygiene compliance

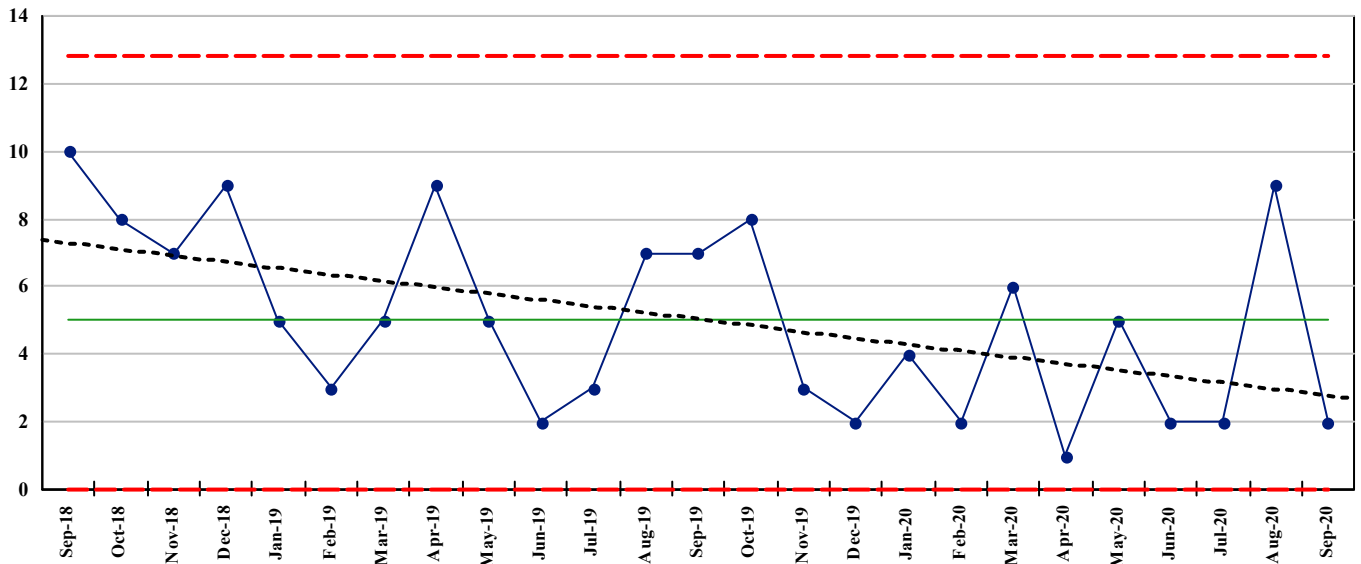


Auckland DHB

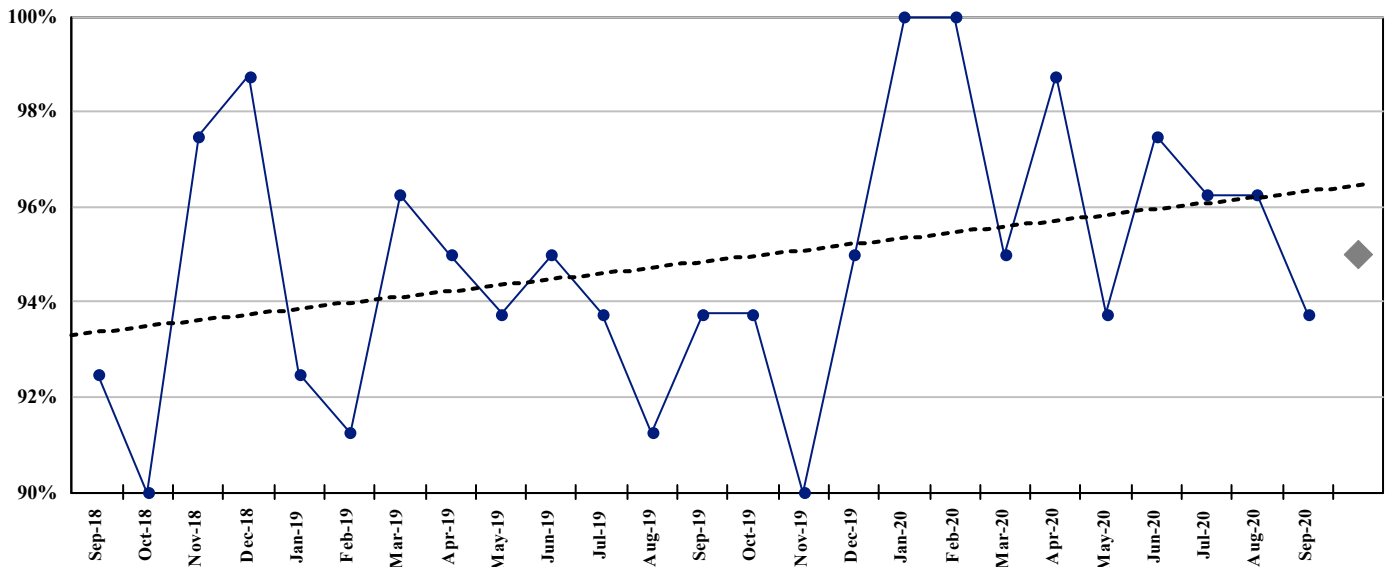
Child Health Clinical Excellence performance indicators for period ending September 2020

Safety

PR335. Paediatric Code Blue Calls



PR355. % PEWS score documented

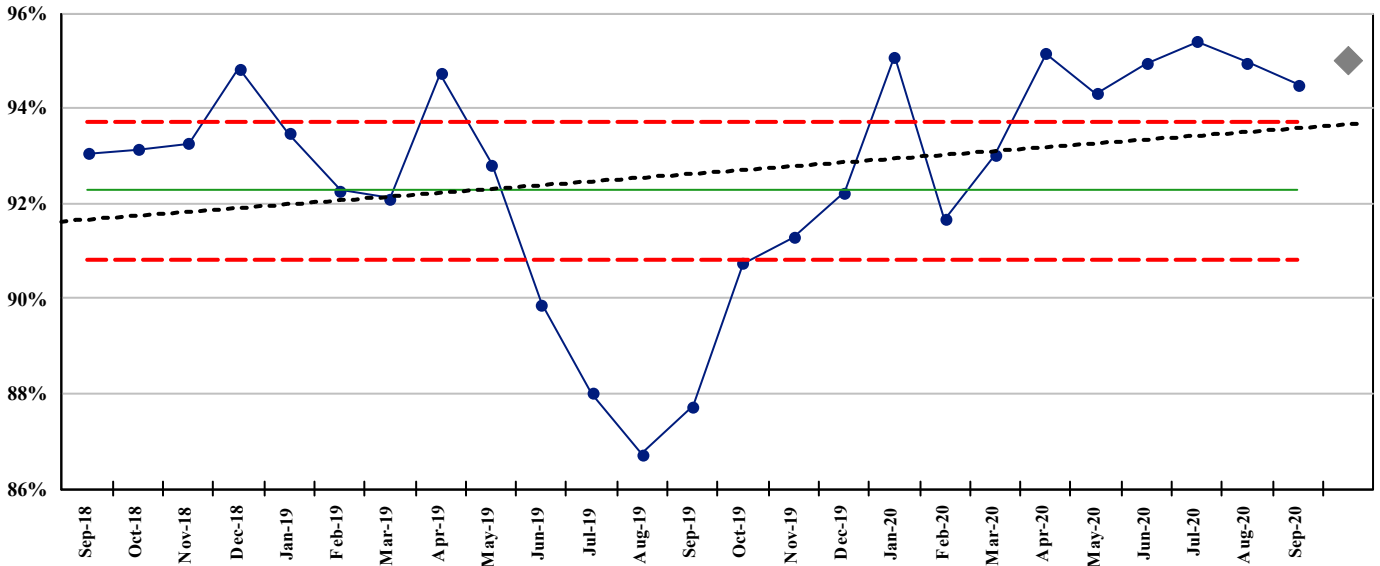


Auckland DHB

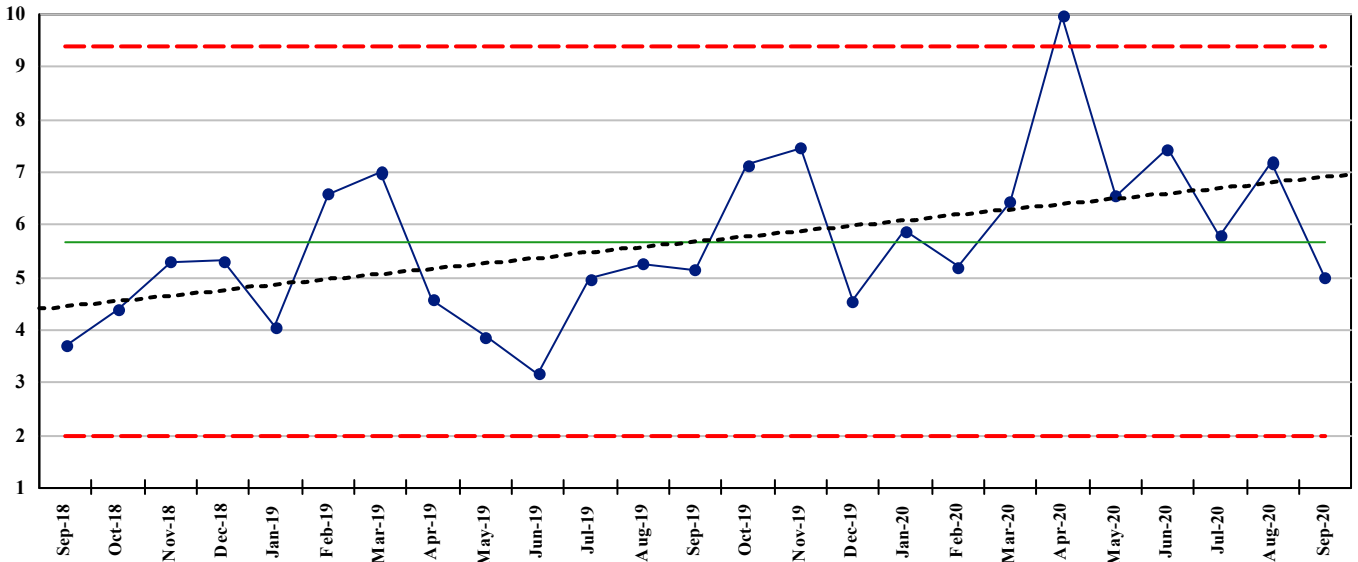
Child Health Clinical Excellence performance indicators for period ending September 2020

Timeliness

PR016. (MOH-01) % CED patients with ED stay < 6 hours



PR034. Median acute time to theatre (decimal hours) - Starship

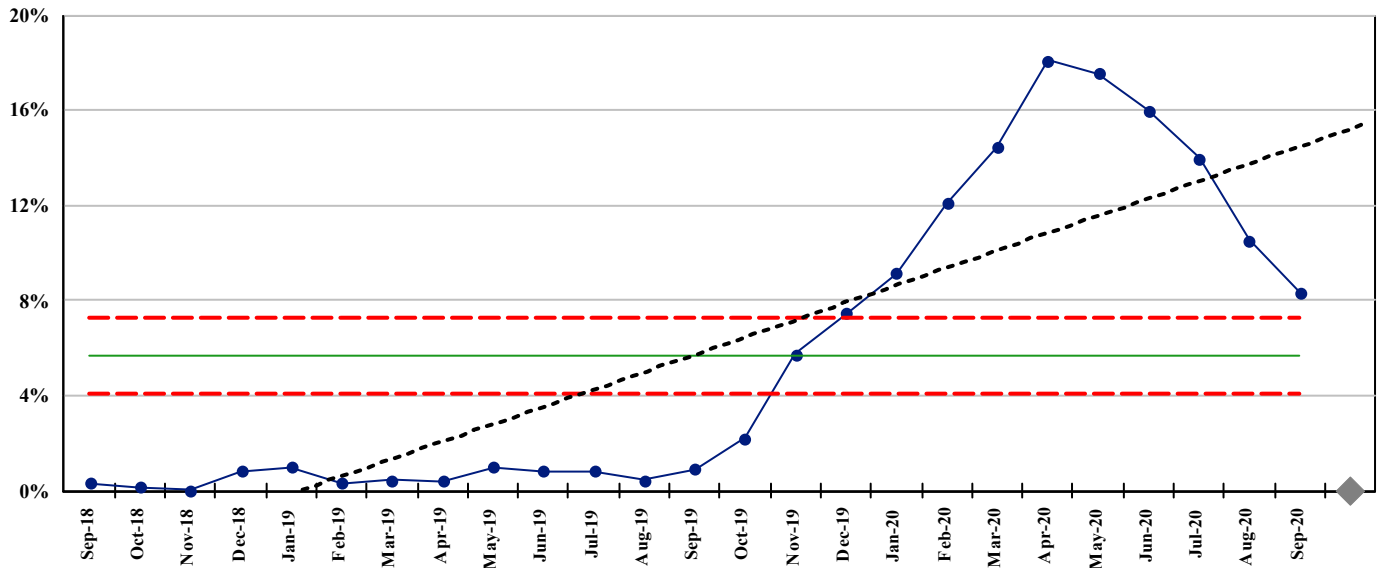


Auckland DHB

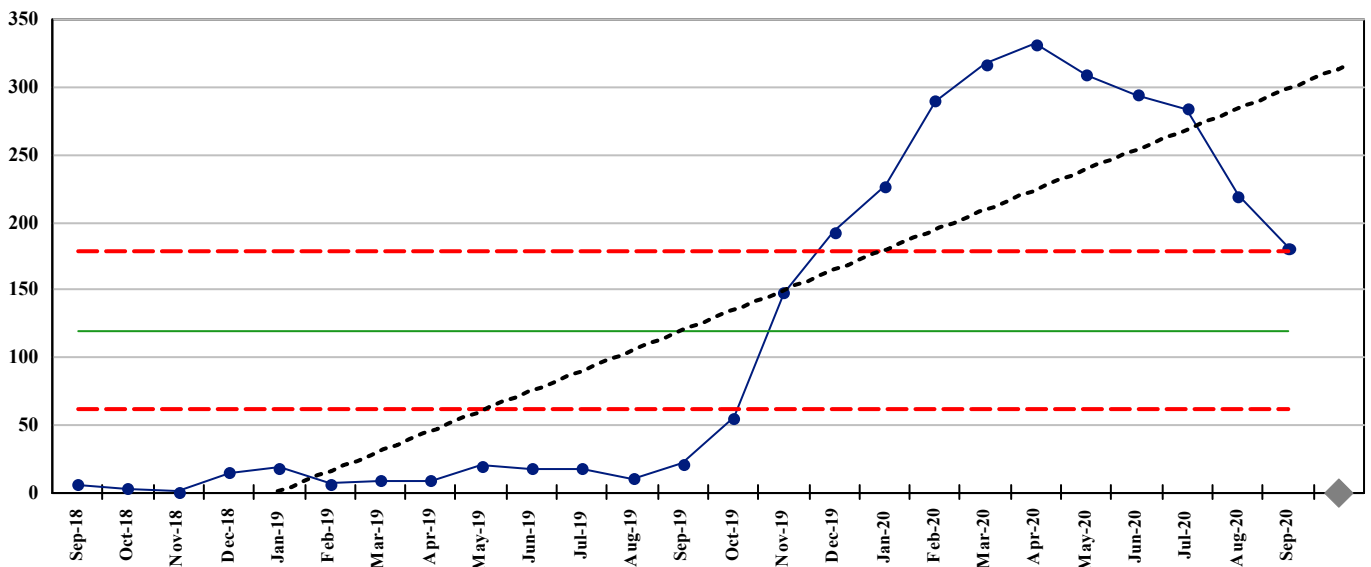
Child Health Clinical Excellence performance indicators for period ending September 2020

Timeliness

PR038. (ESPI-2) Patients waiting longer than 4 months for their FSA



PR328. (ESPI-2) Number of patients waiting longer than 4 months for their FSA - Total

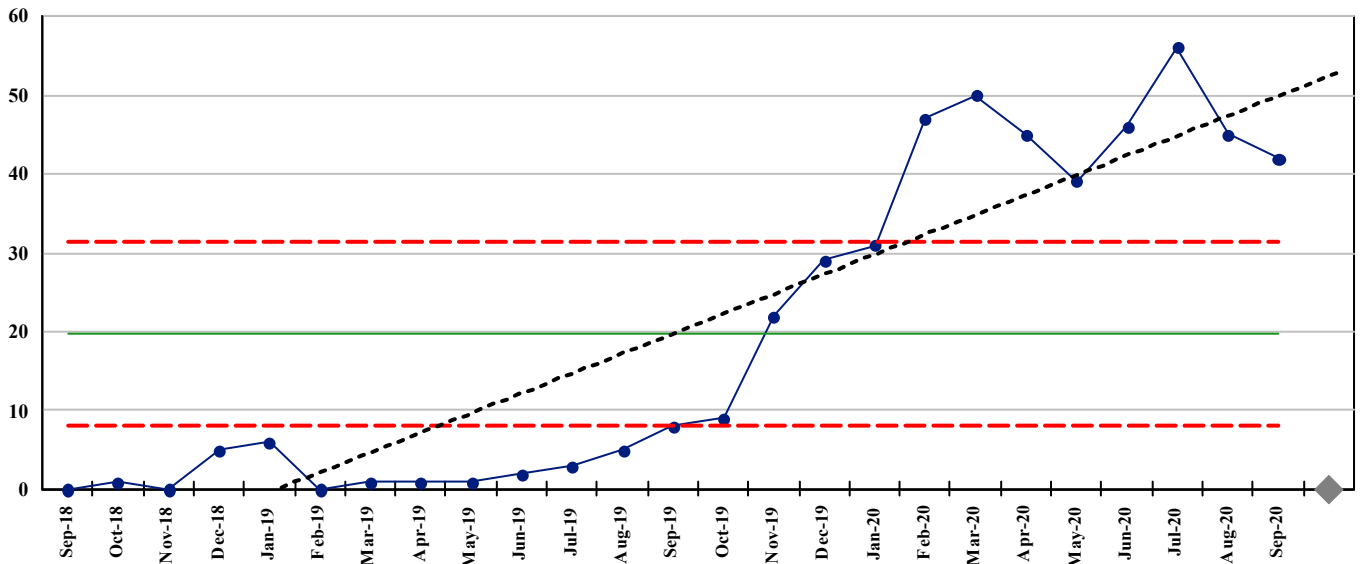


Auckland DHB

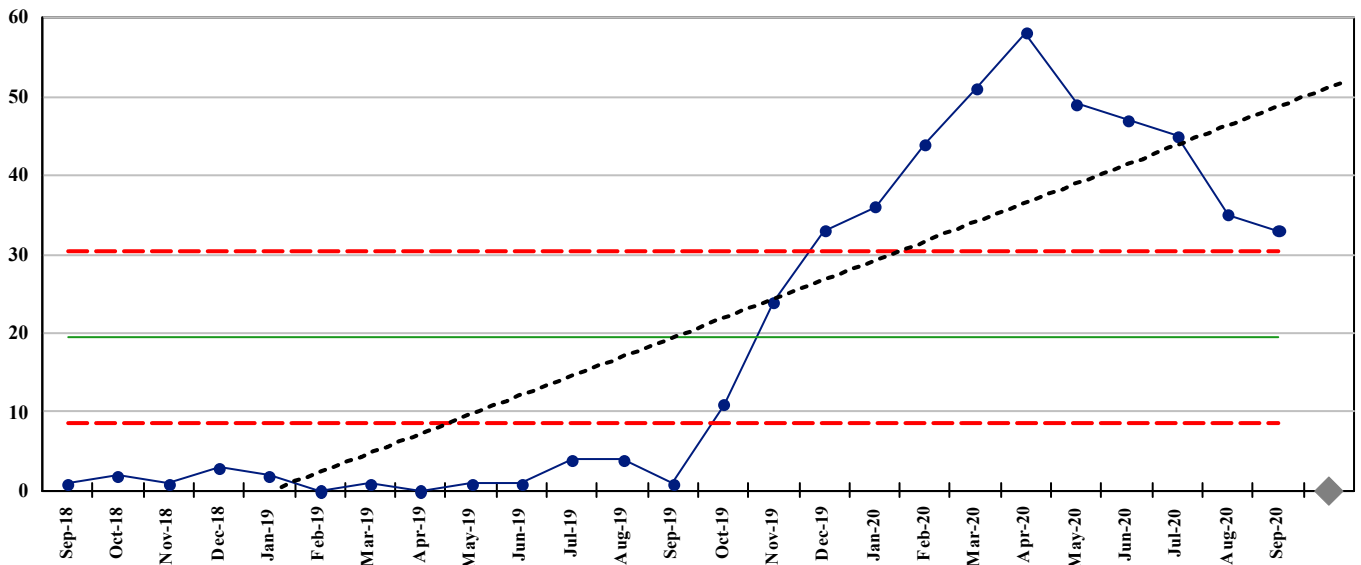
Child Health Clinical Excellence performance indicators for period ending September 2020

Timeliness

PR329. (ESPI-2) Number of patients waiting longer than 4 months for their FSA - Maori



PR330. (ESPI-2) Number of patients waiting longer than 4 months for their FSA - Pacific

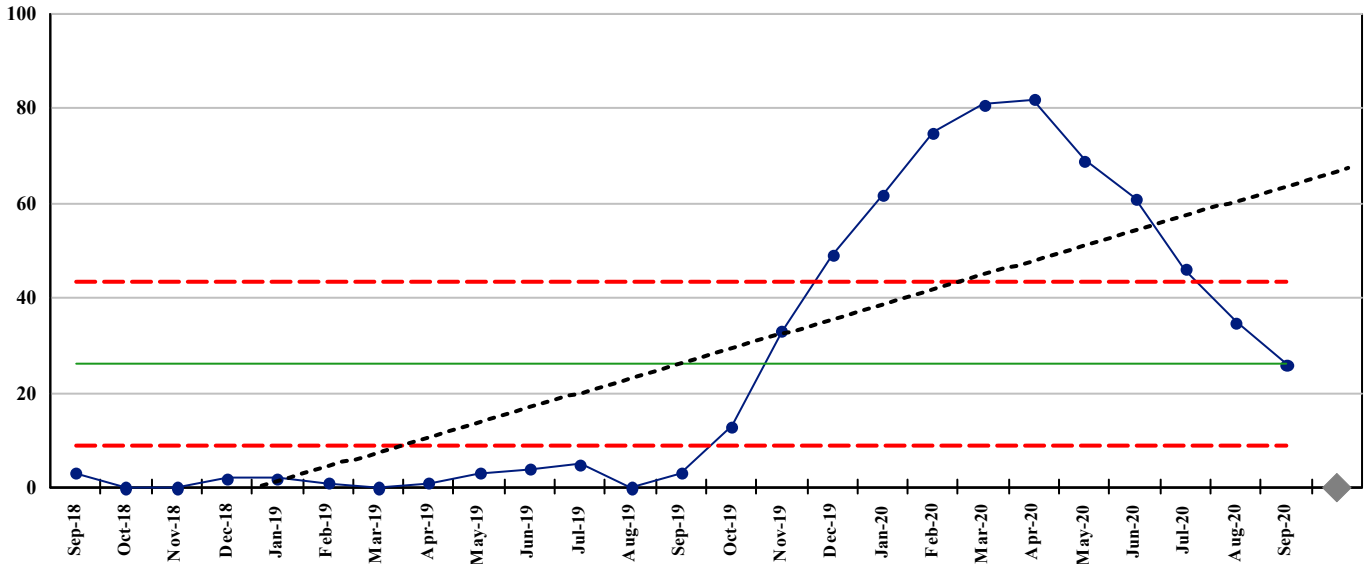


Auckland DHB

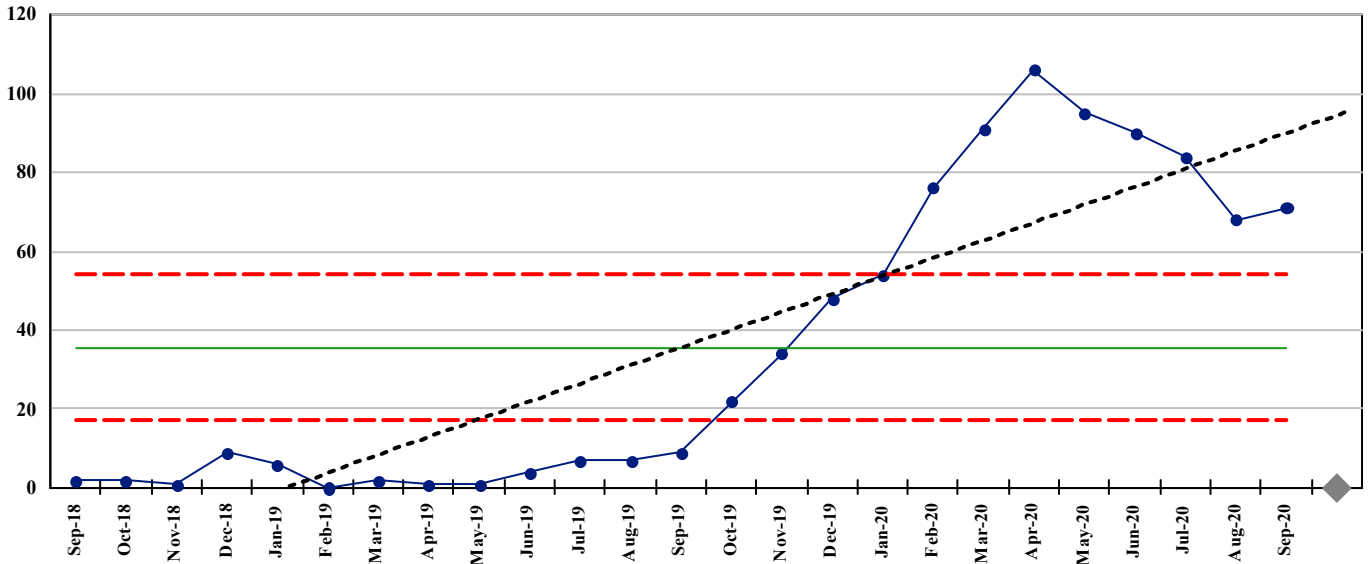
Child Health Clinical Excellence performance indicators for period ending September 2020

Timeliness

PR331. (ESPI-2) Number of patients waiting longer than 4 months for their FSA - Asian



PR332. (ESPI-2) Number of patients waiting longer than 4 months for their FSA - Deprivation Scale Q5

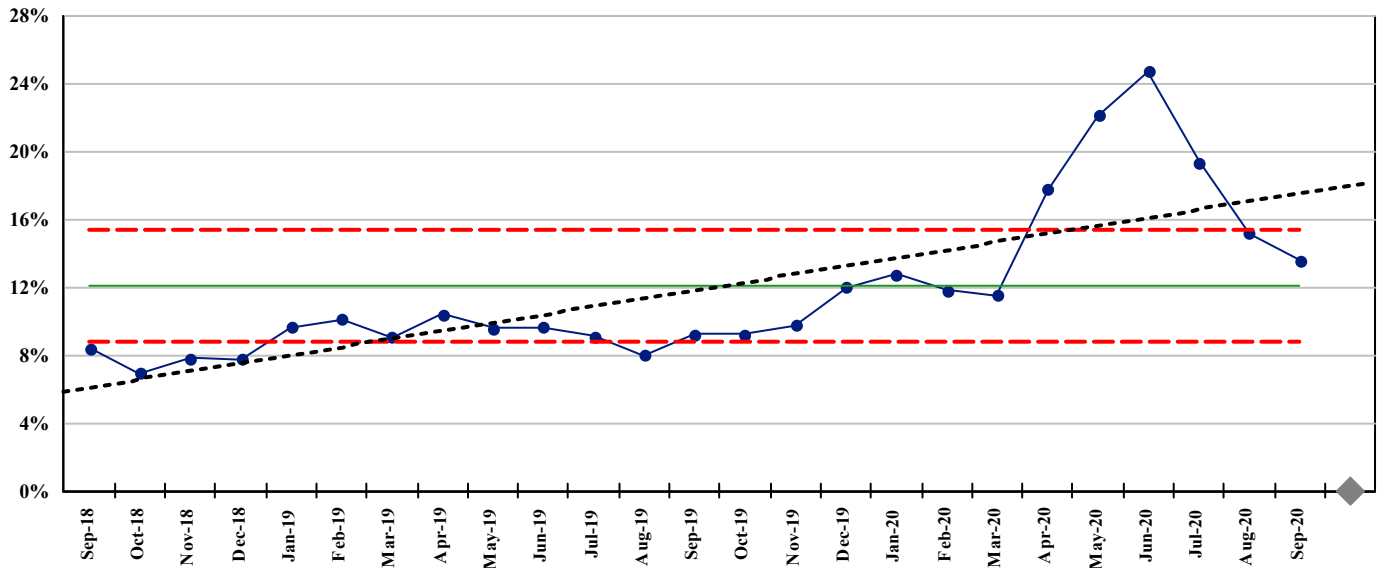


Auckland DHB

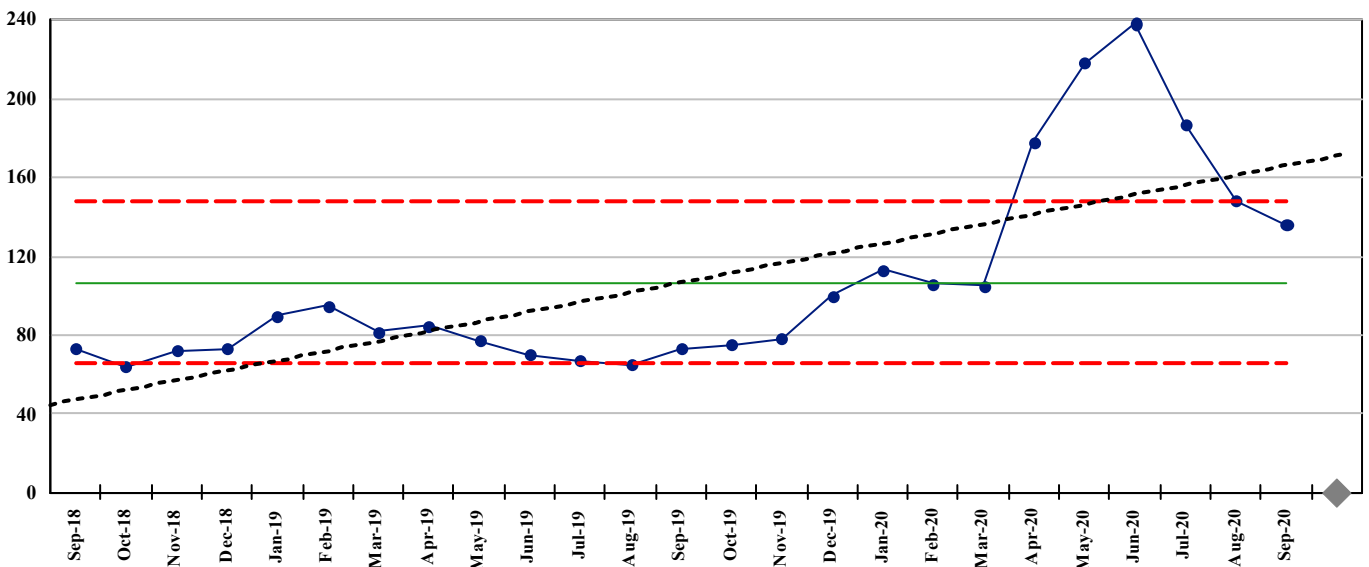
Child Health Clinical Excellence performance indicators for period ending September 2020

Timeliness

PR039. (ESPI-5) Patients given a commitment to treatment but not treated within 4 months



PR327. (ESPI-5) Number of patients given a commitment to treatment but not treated within 4 months - Total

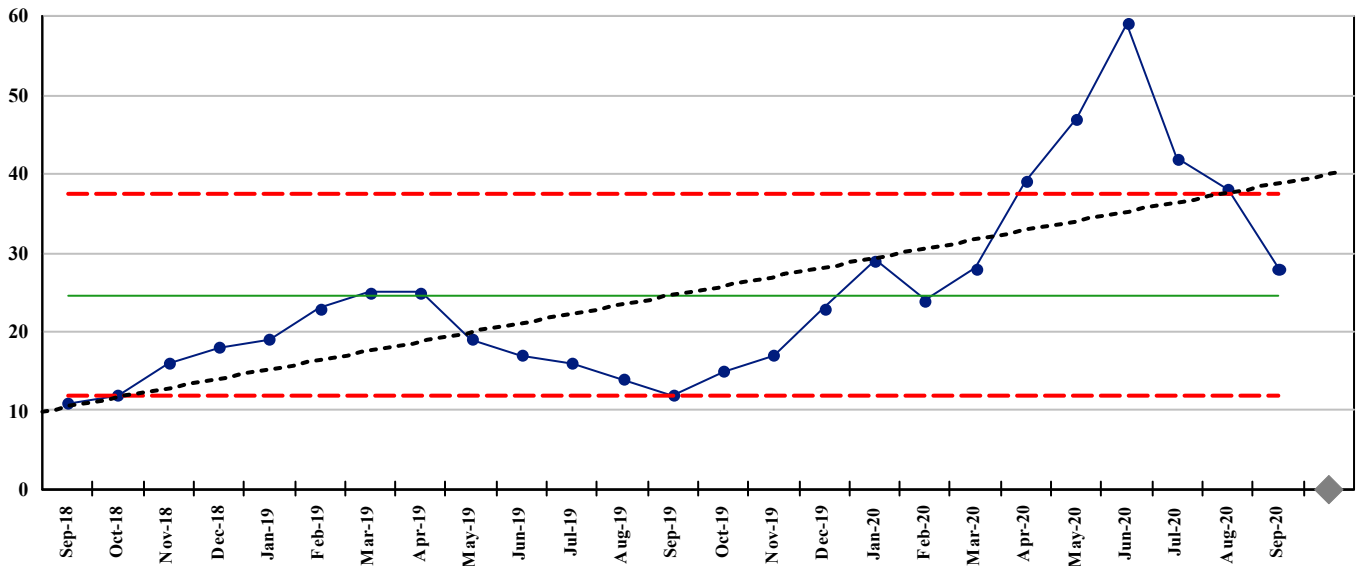


Auckland DHB

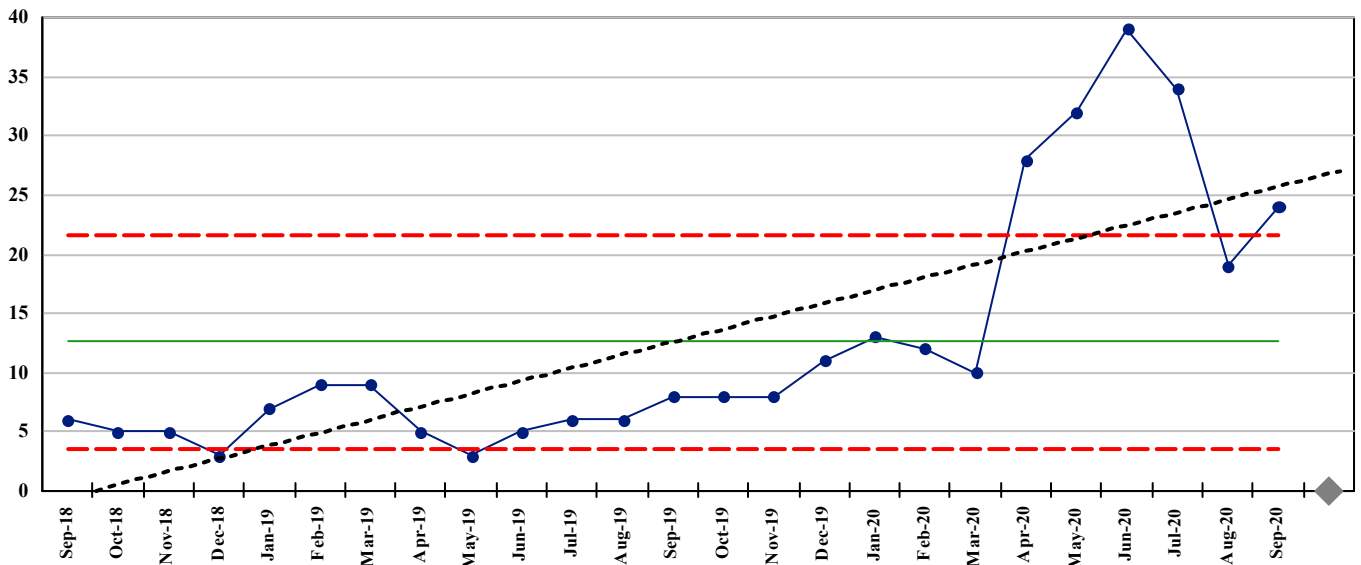
Child Health Clinical Excellence performance indicators for period ending September 2020

Timeliness

PR323. (ESPI-5) Number of patients given a commitment to treatment but not treated within 4 months - Maori



PR324. (ESPI-5) Number of patients given a commitment to treatment but not treated within 4 months - Pacific

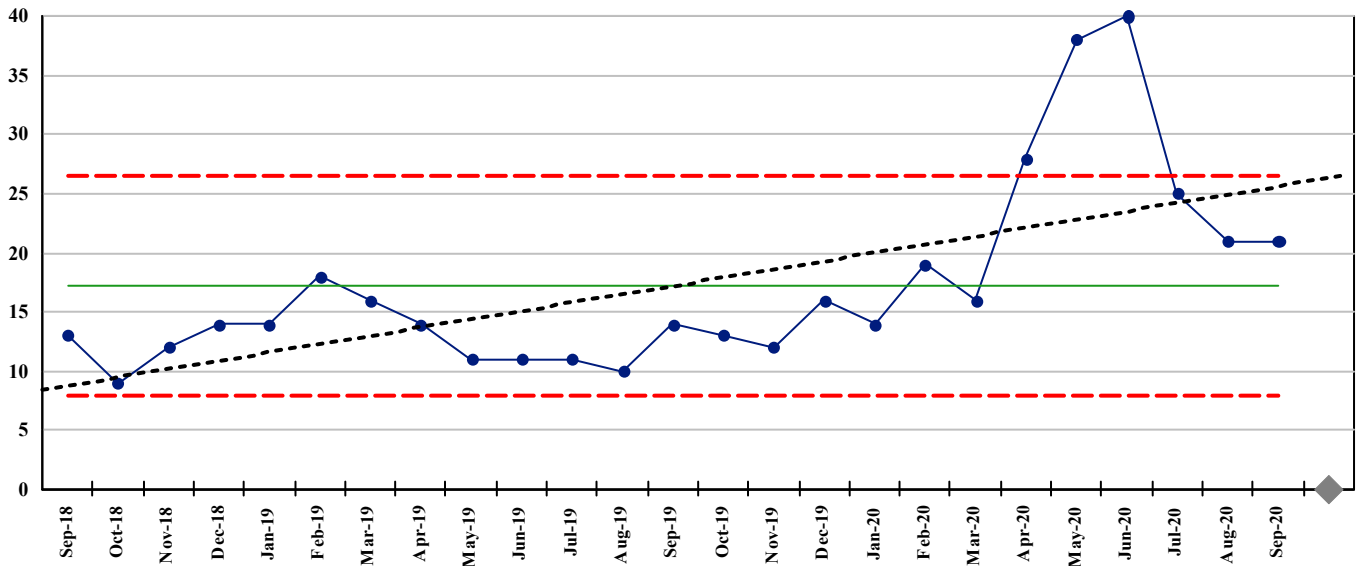


Auckland DHB

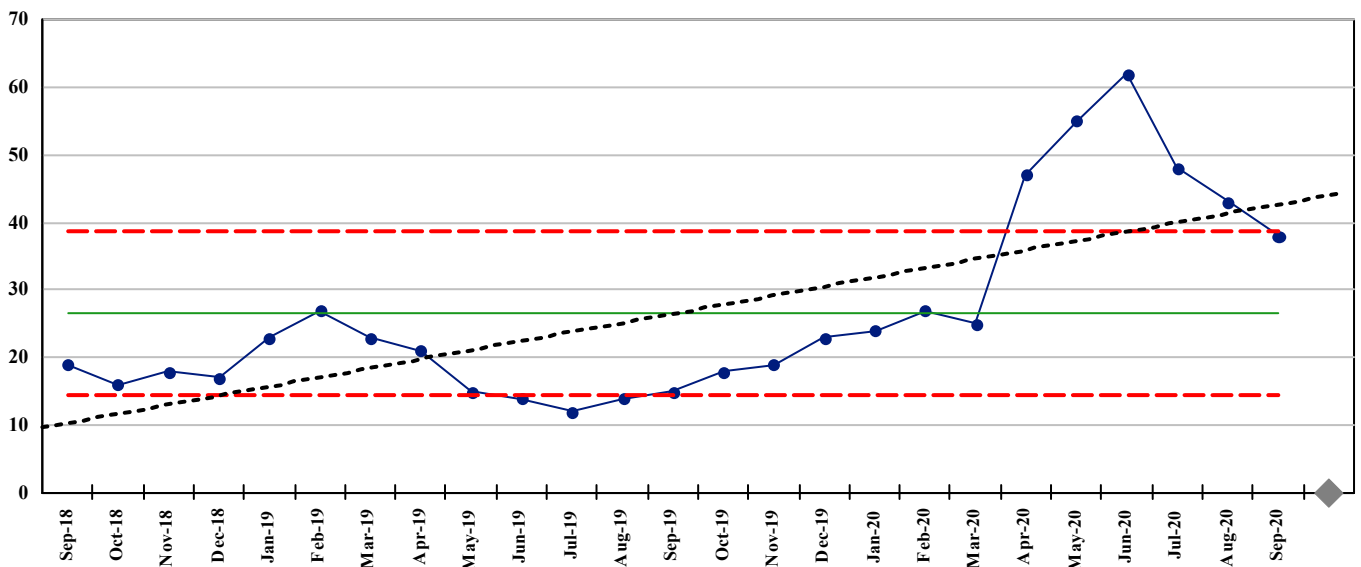
Child Health Clinical Excellence performance indicators for period ending September 2020

Timeliness

PR325. (ESPI-5) Number of patients given a commitment to treatment but not treated within 4 months - Asian



PR326. (ESPI-5) Number of patients given a commitment to treatment but not treated within 4 months - Deprivation Scale Q5

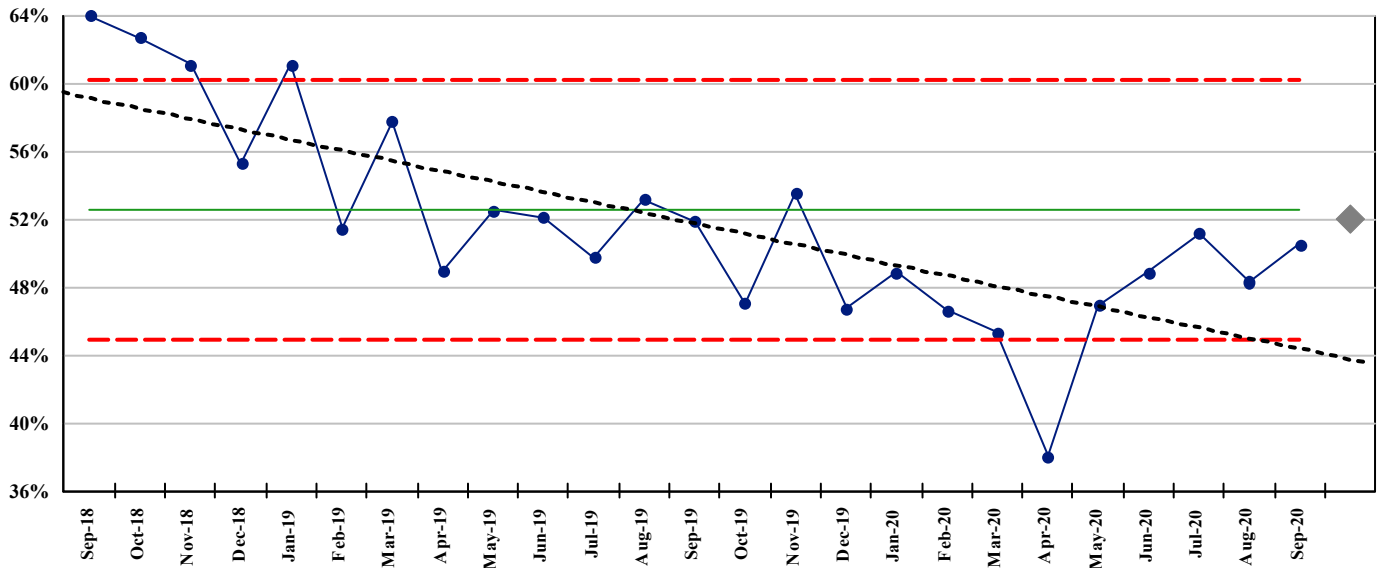


Auckland DHB

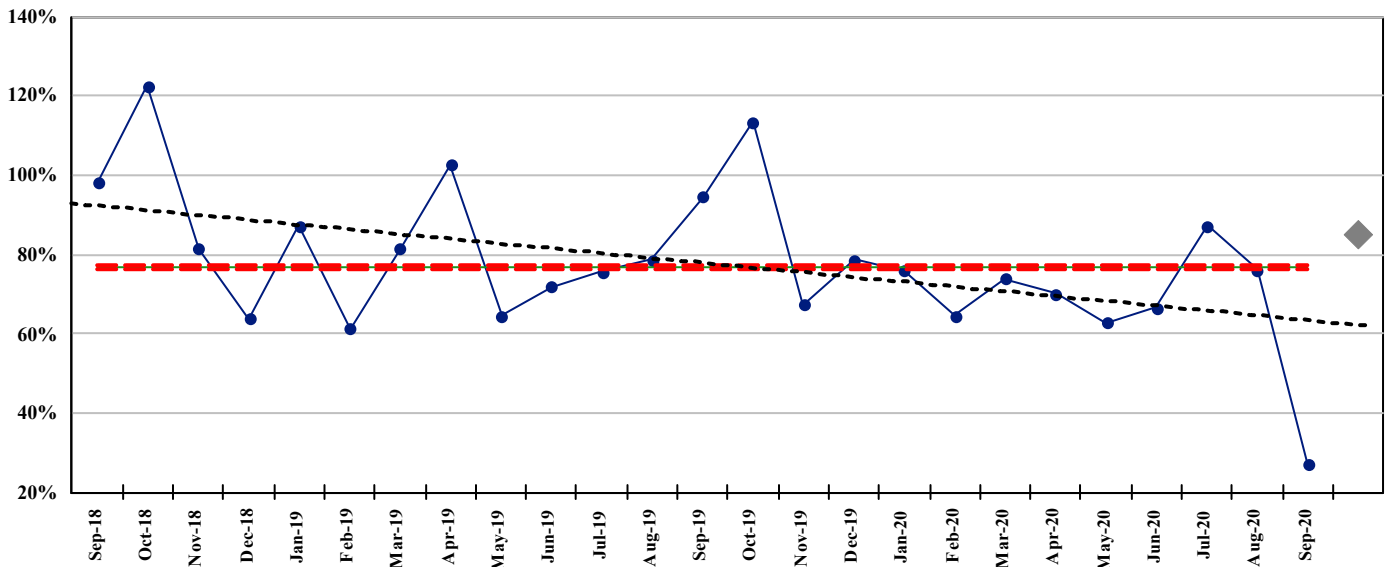
Child Health Clinical Excellence performance indicators for period ending September 2020

Efficiency

PR052. % Day Surgery Rate



PR198. % Adjusted Session Theatre Utilisation

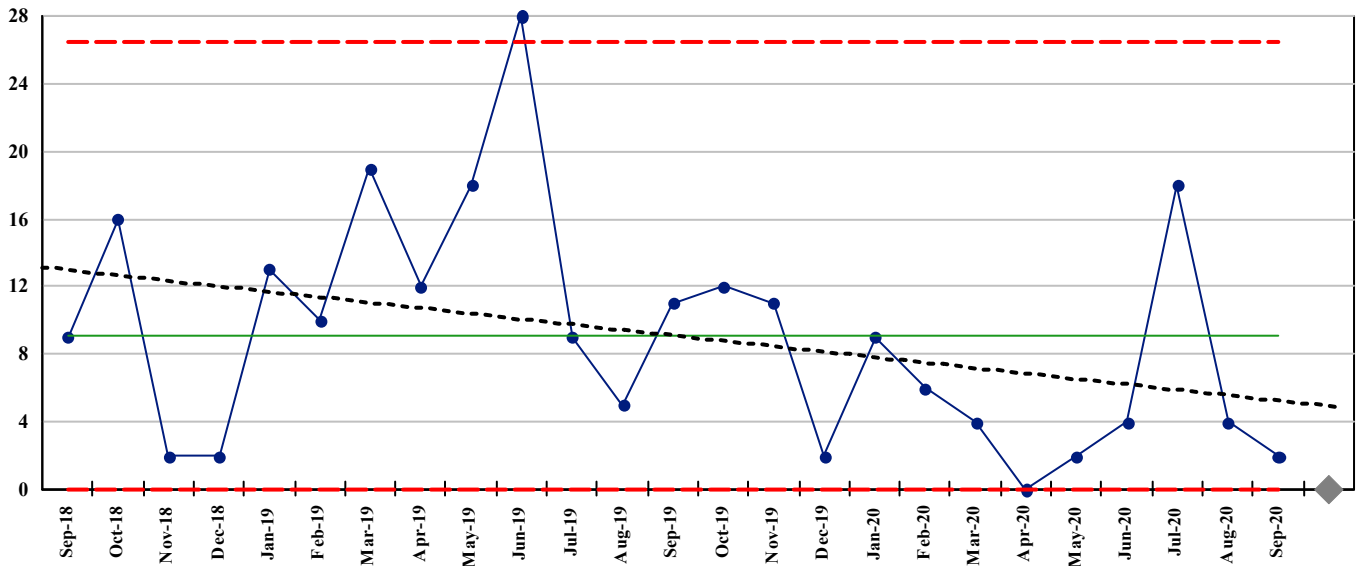


Auckland DHB

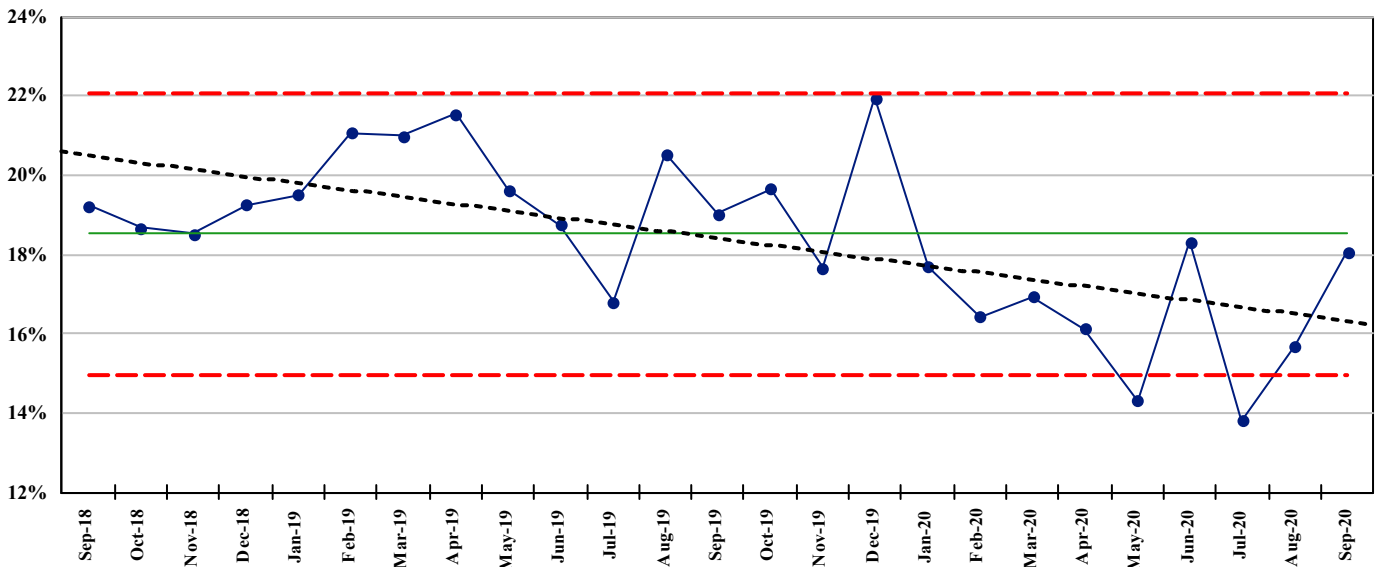
Child Health Clinical Excellence performance indicators for period ending September 2020

Efficiency

PR333. PICU Exit Blocks



PR375. % of patients discharged on a date other than their estimated discharge date

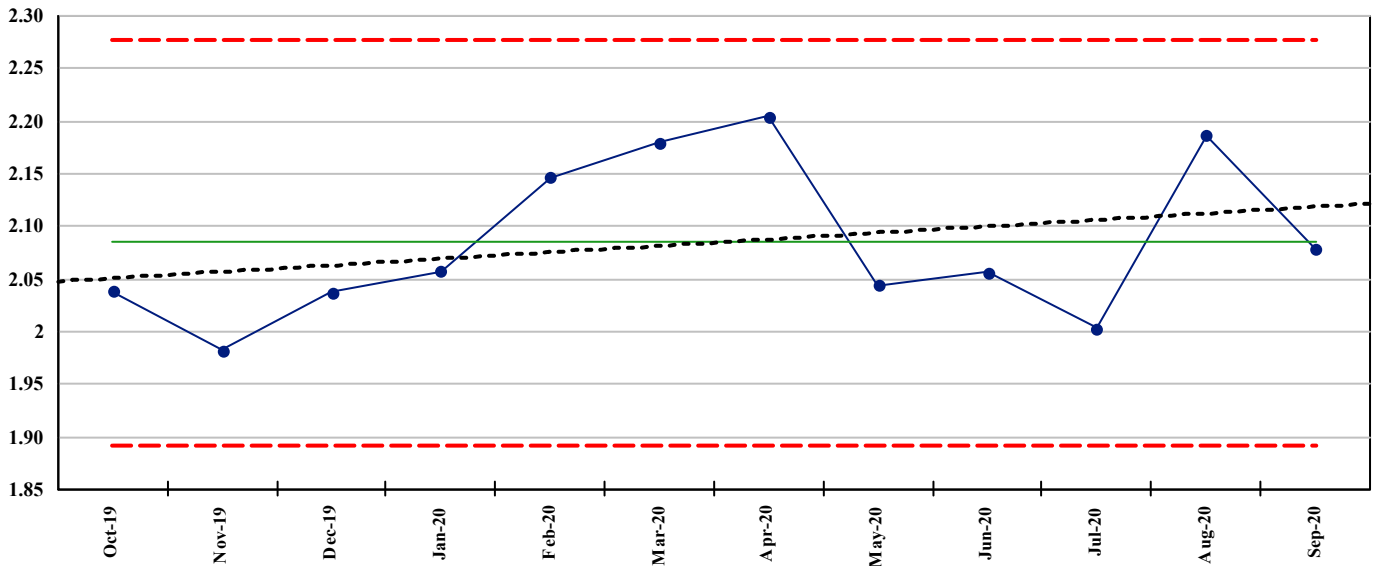


Auckland DHB

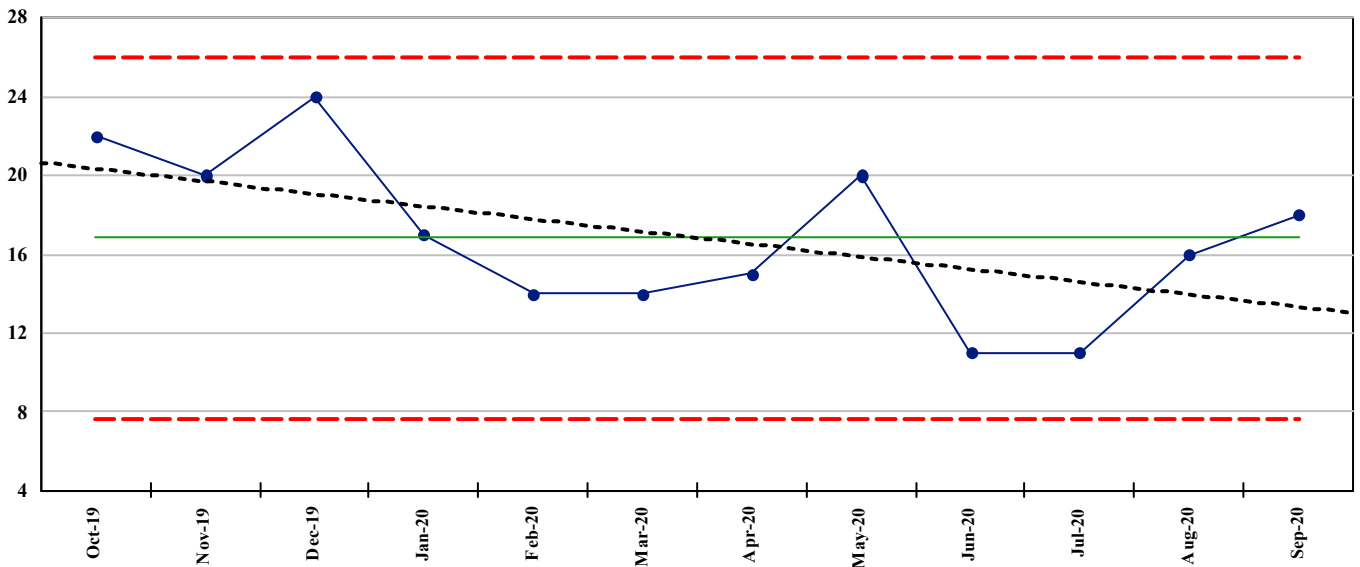
Child Health Clinical Excellence performance indicators for period ending September 2020

Efficiency

PR437. Inpatient Median LOS



PR438. Inpatients with LOS over 30 days (discharged)

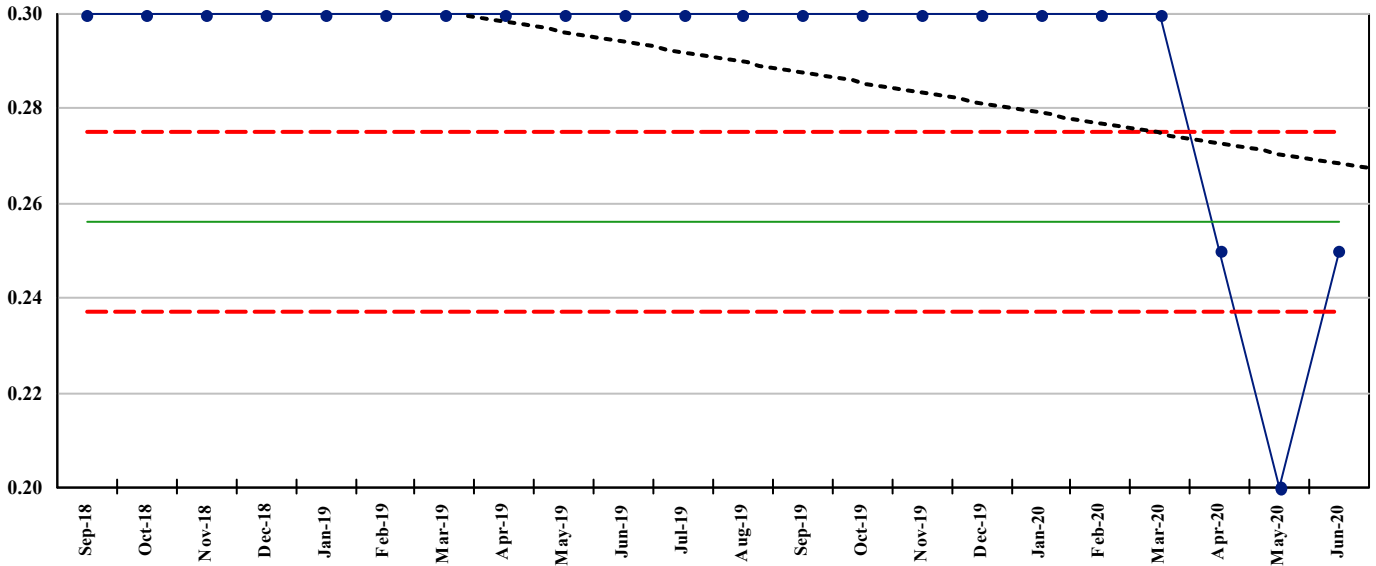


Auckland DHB

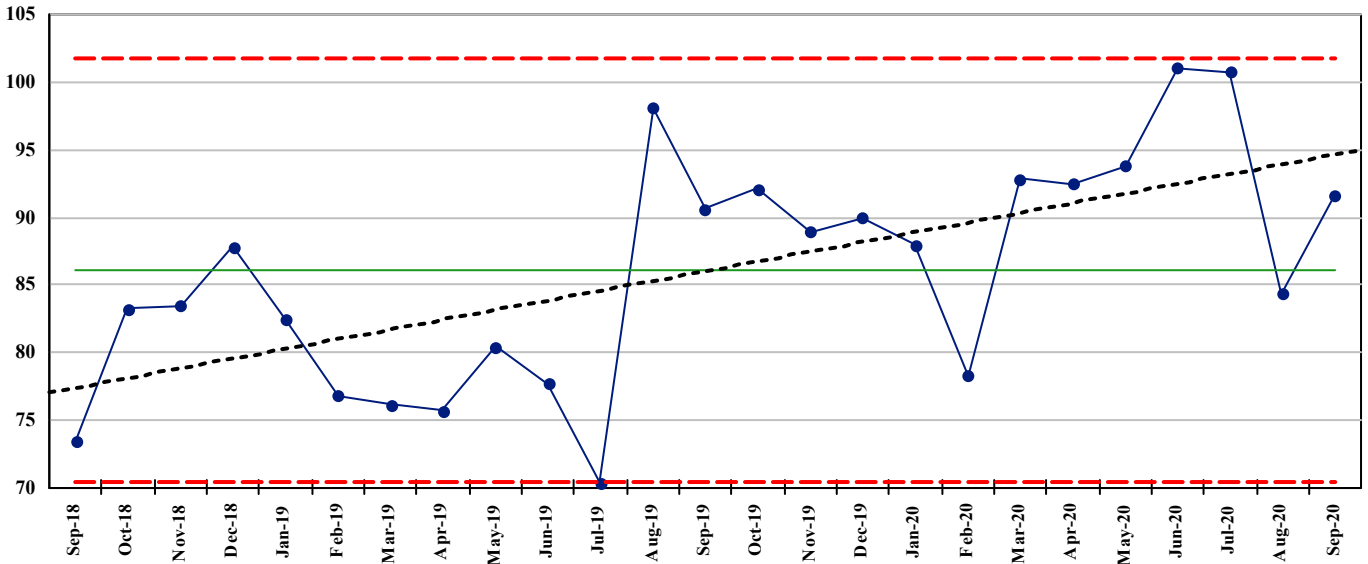
Child Health Clinical Excellence performance indicators for period ending September 2020

Efficiency

PR440. FSA to FU Ratio – Child Health



PR441. Laboratory cost per bed day (\$) - Child Health

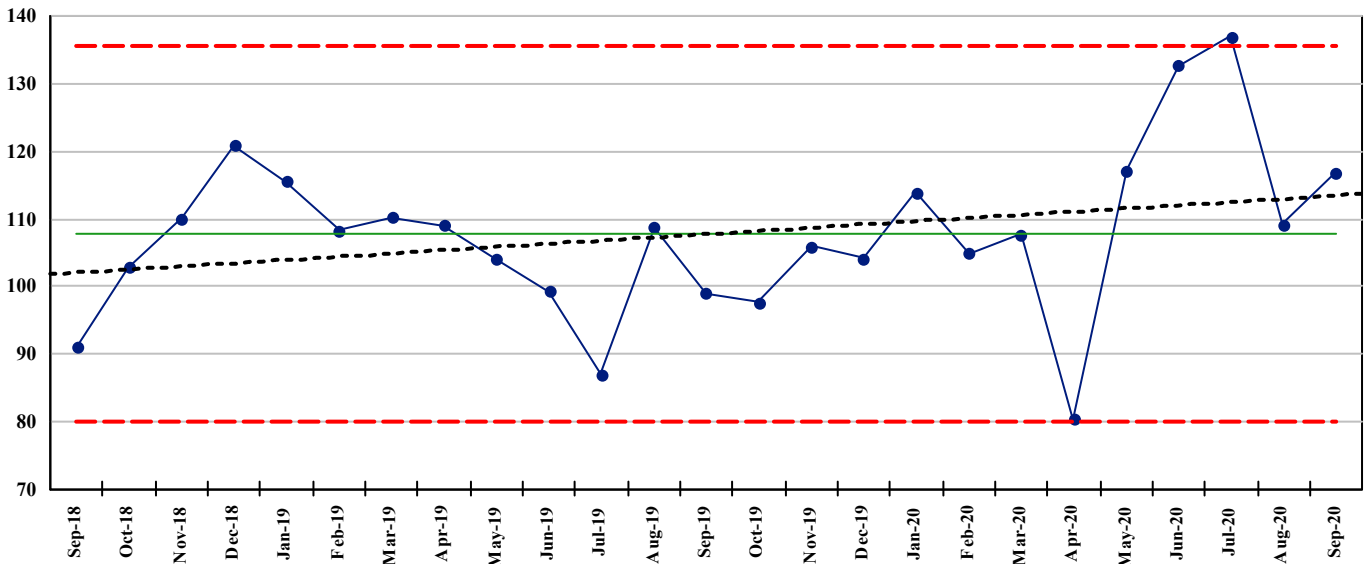


Auckland DHB

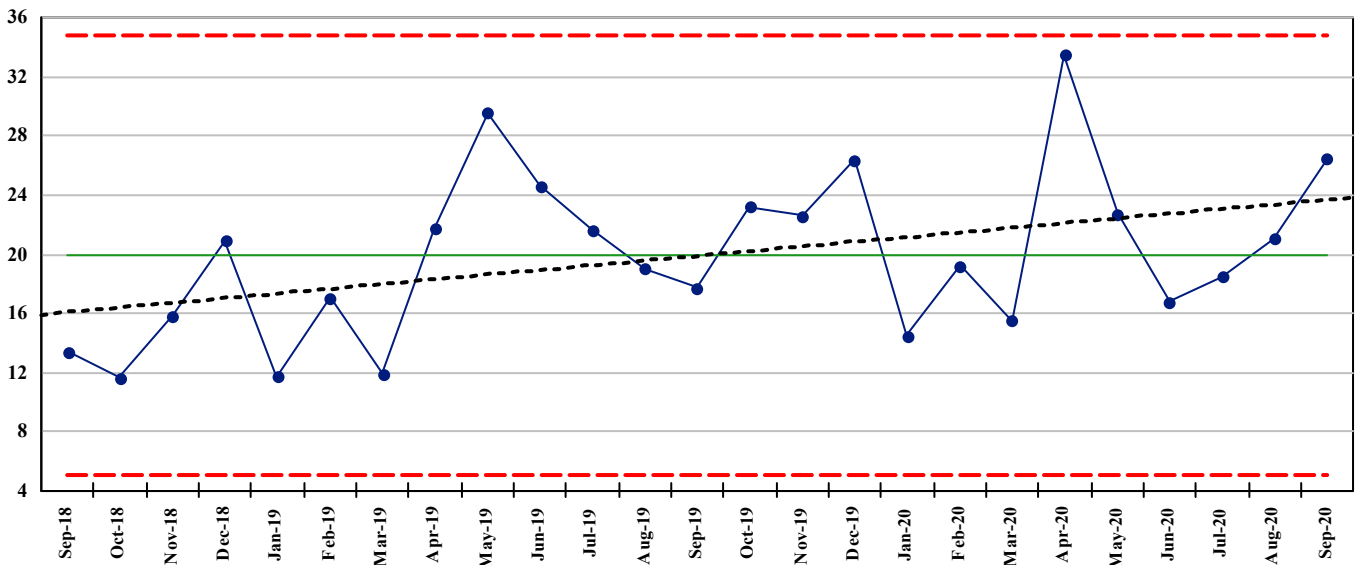
Child Health Clinical Excellence performance indicators for period ending September 2020

Efficiency

PR442. Radiology cost per bed day (\$) - Child Health



PR443. Antibiotic cost per bed day (\$) - Child Health

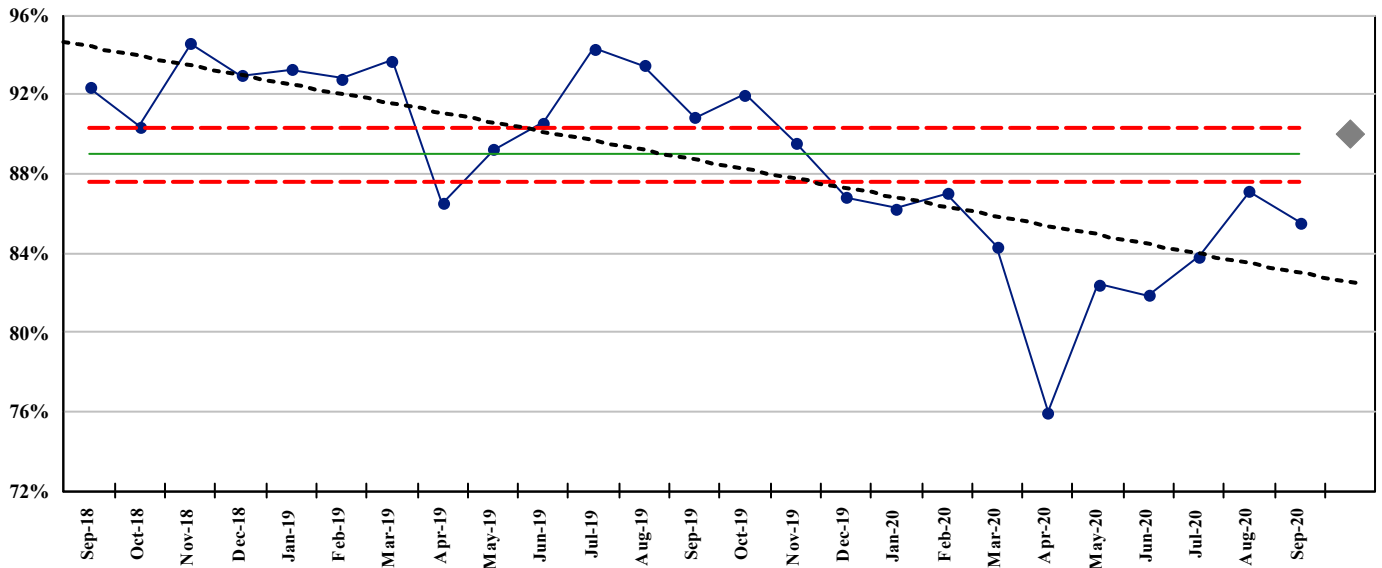


Auckland DHB

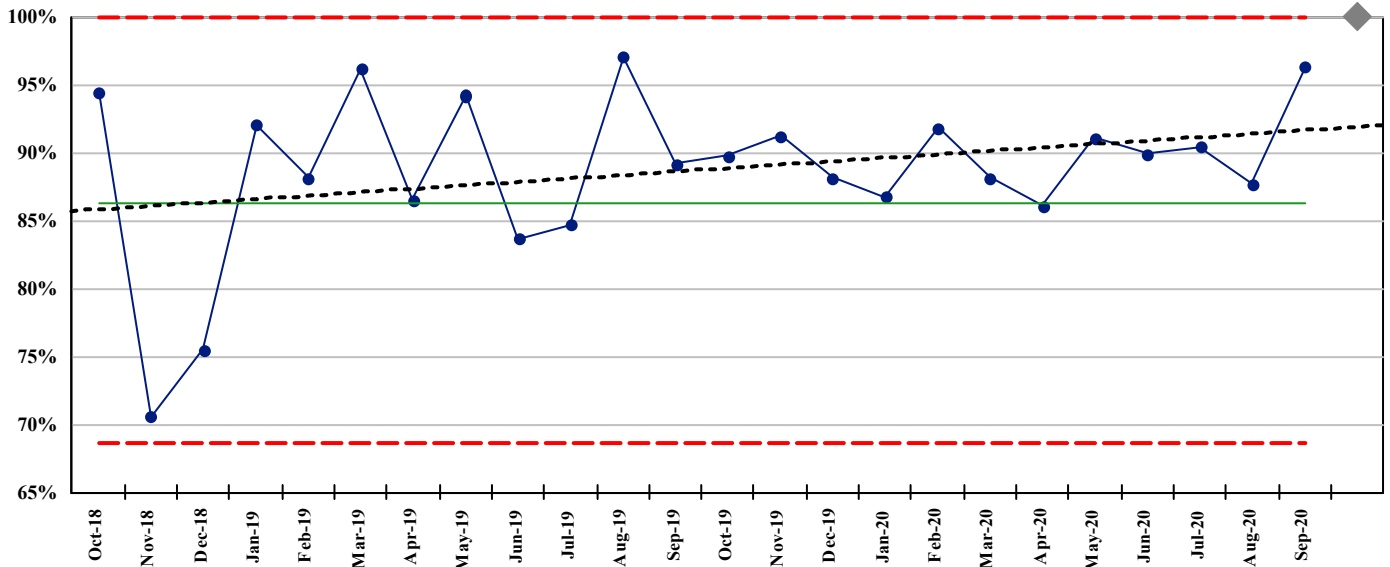
Child Health Clinical Excellence performance indicators for period ending September 2020

Efficiency

PR444. Average Occupancy



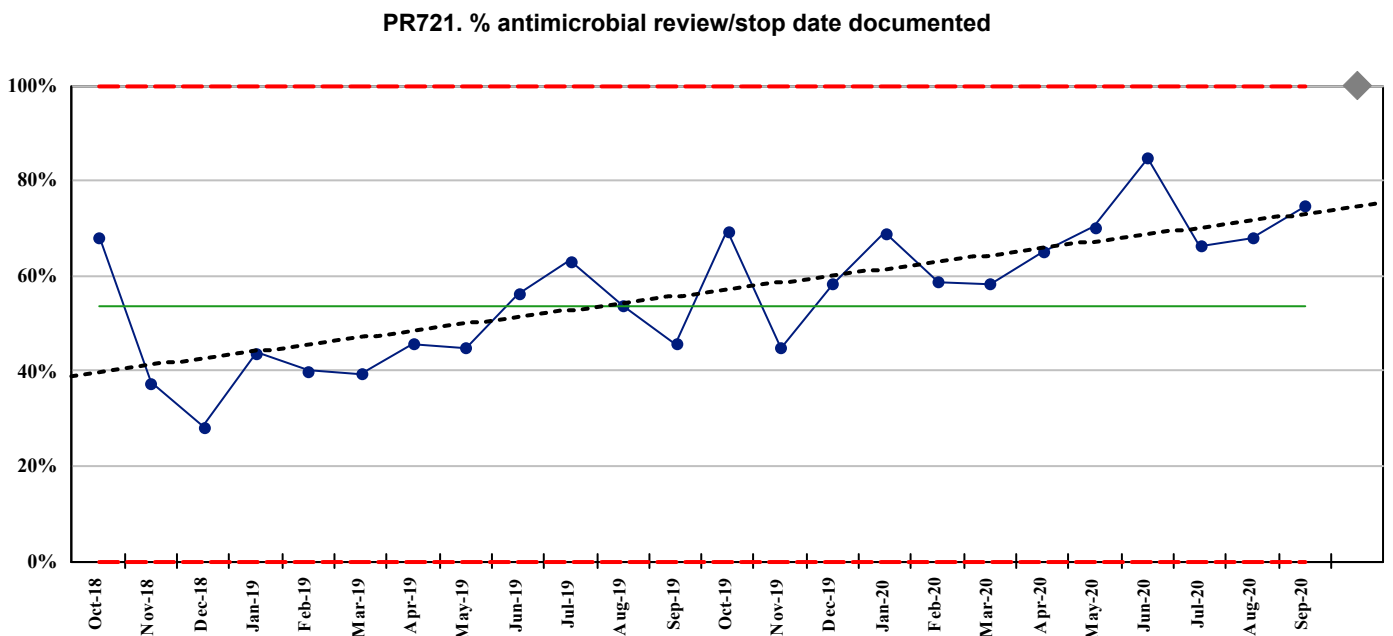
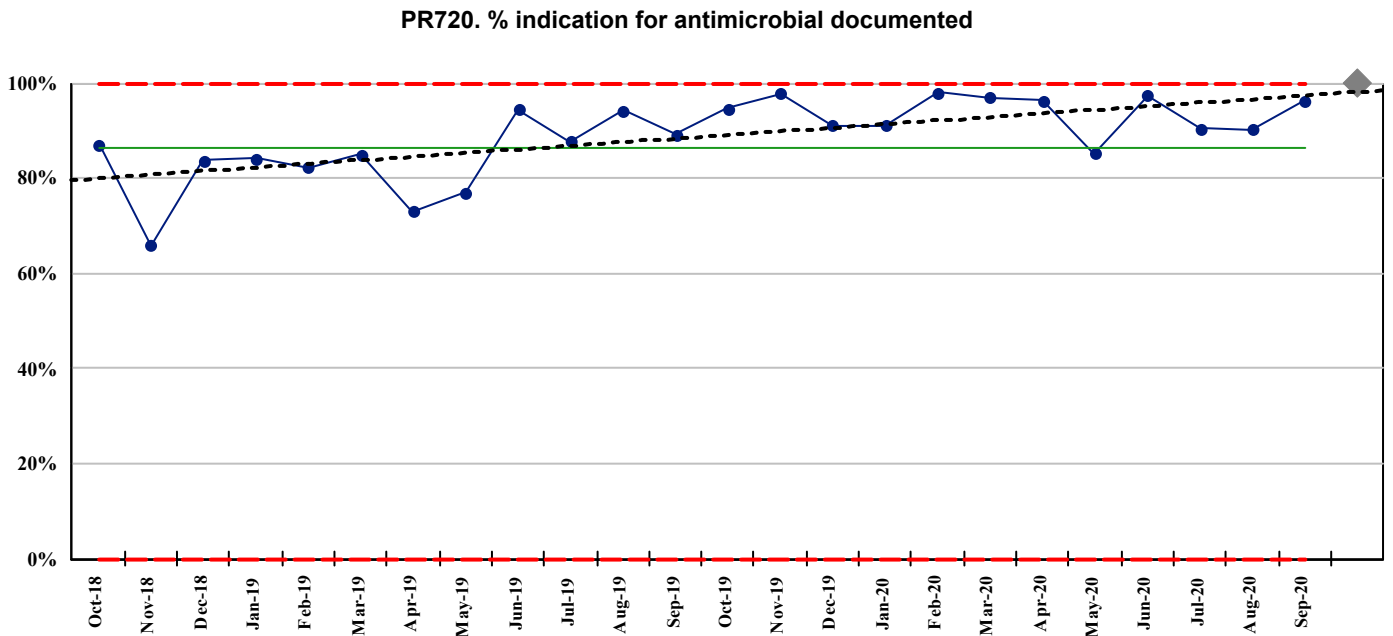
PR719. % adherence with antimicrobial guidelines



Auckland DHB

Child Health Clinical Excellence performance indicators for period ending September 2020

Efficiency

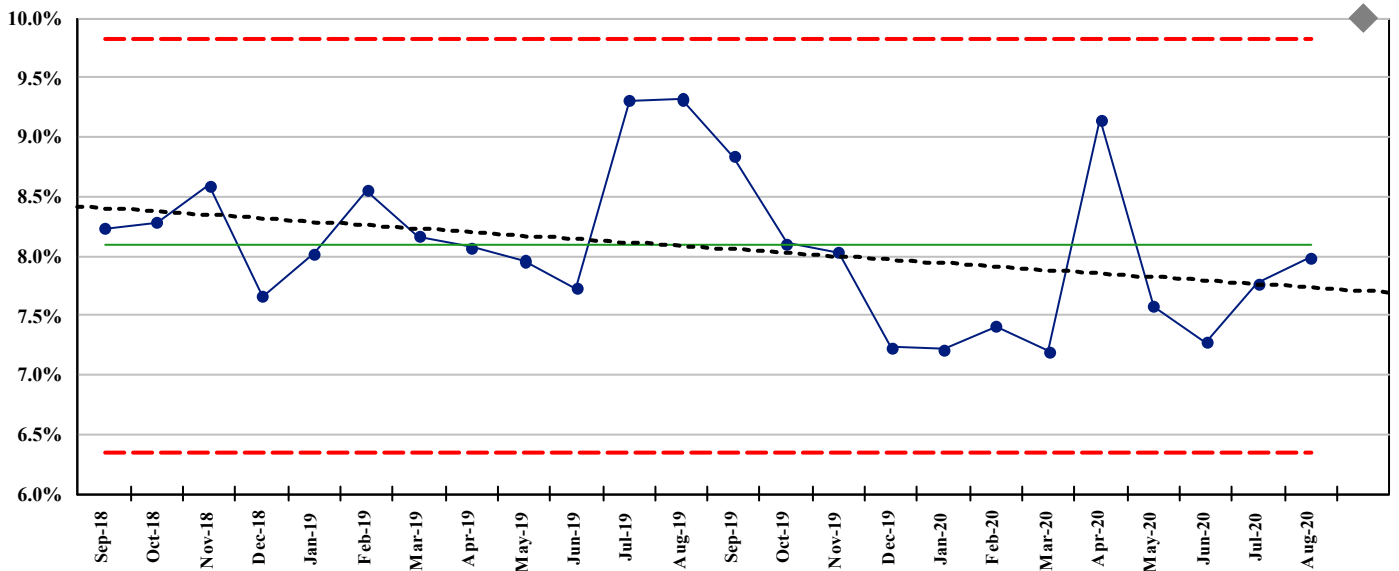


Auckland DHB

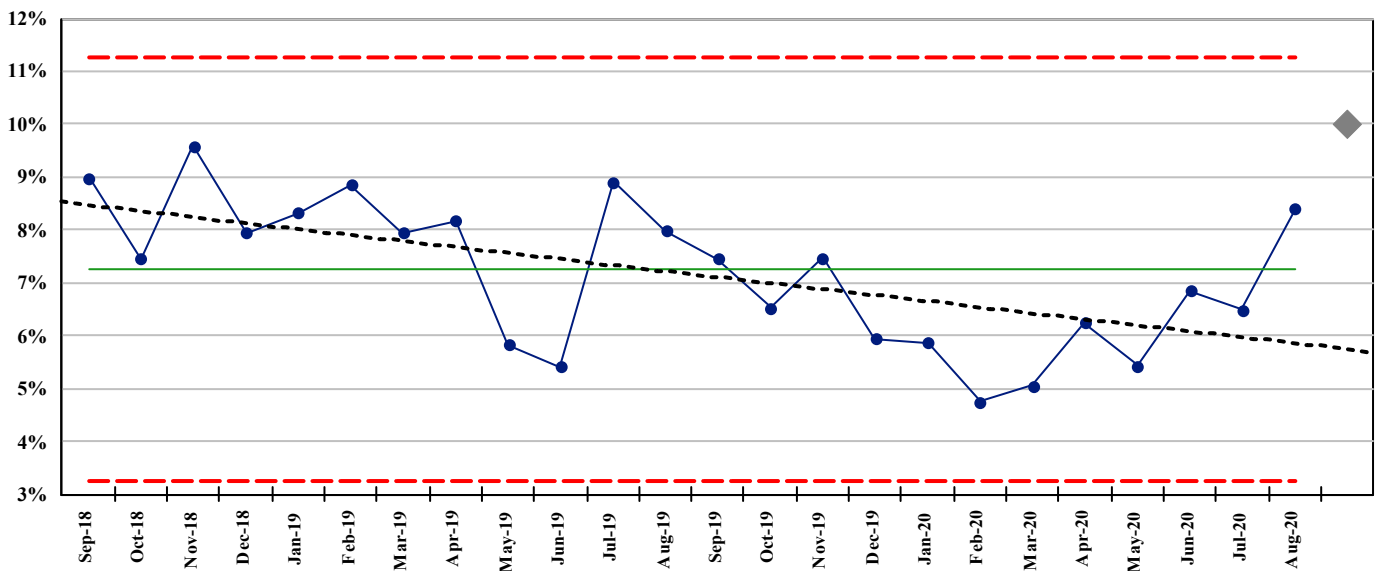
Child Health Clinical Excellence performance indicators for period ending September 2020

Effectiveness

PR713. 28 Day Readmission Rate – all DHBs – Total



PR714. 28 Day Readmission Rate – all DHBs – Maori

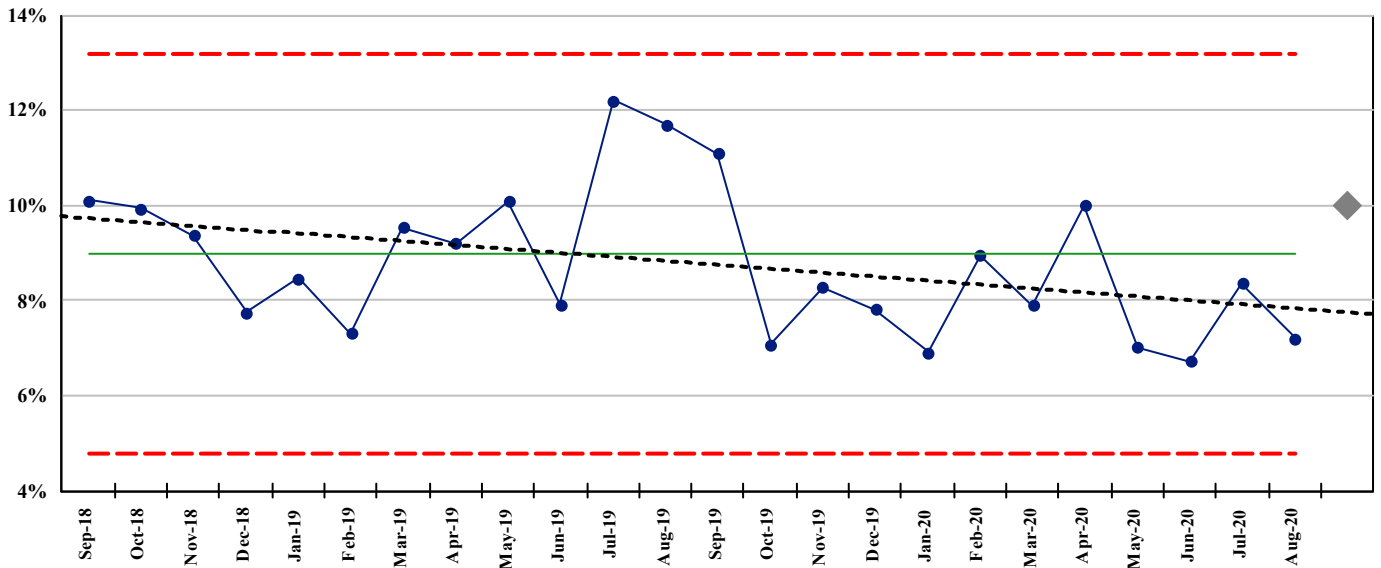


Auckland DHB

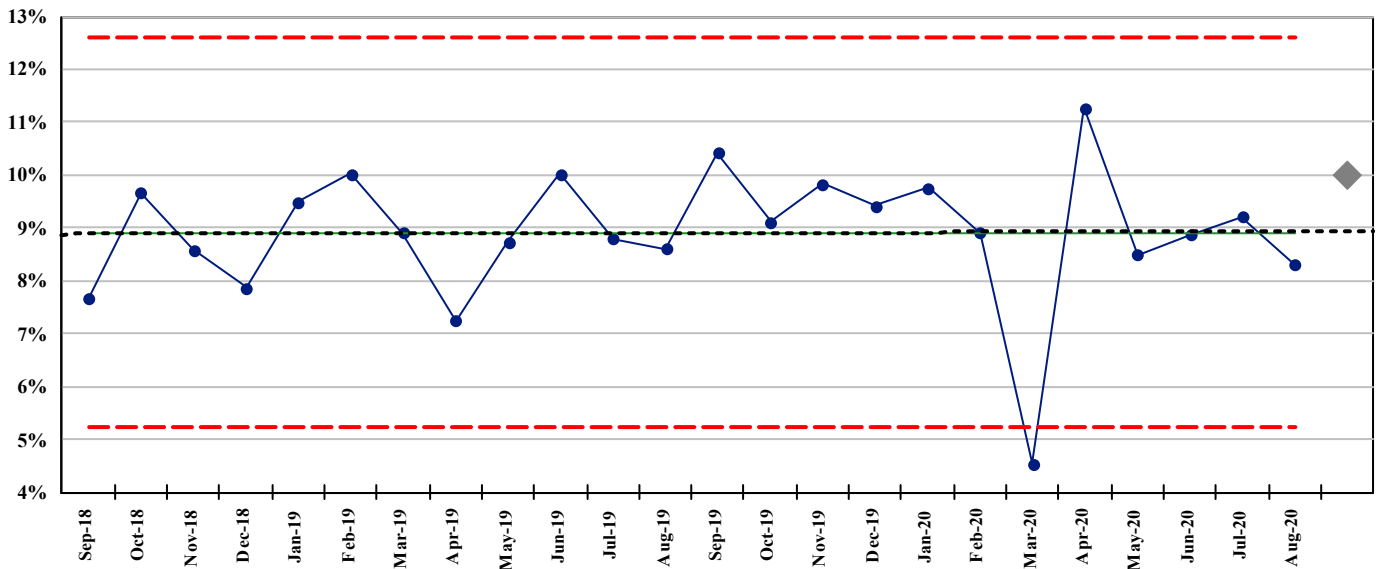
Child Health Clinical Excellence performance indicators for period ending September 2020

Effectiveness

PR715. 28 Day Readmission Rate – all DHBs – Pacific



PR716. 28 Day Readmission Rate – all DHBs – Asian

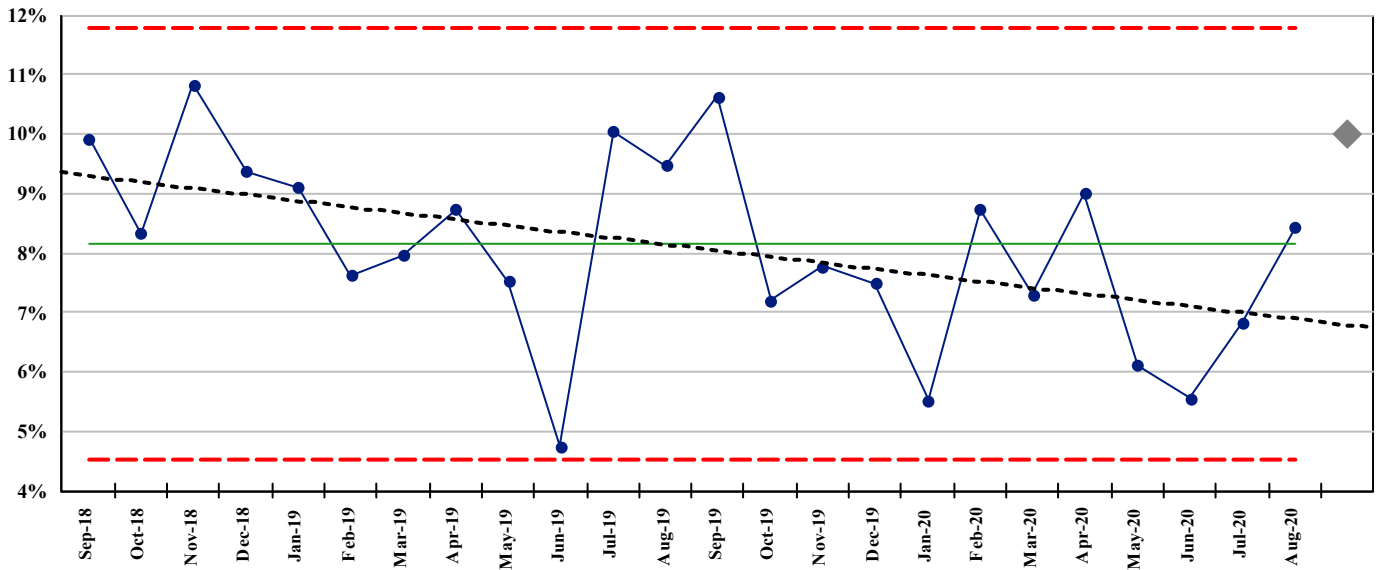


Auckland DHB

Child Health Clinical Excellence performance indicators for period ending September 2020

Effectiveness

PR717. 28 Day Readmission Rate – all DHBs – Deprivation Scale Q5

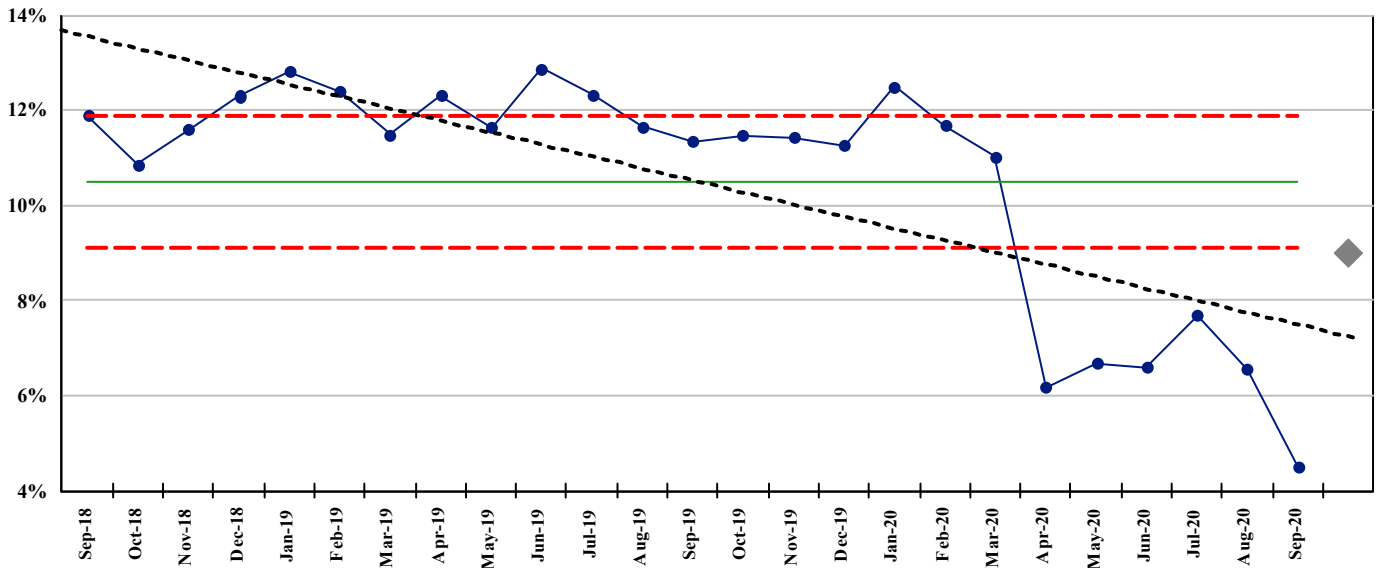


Auckland DHB

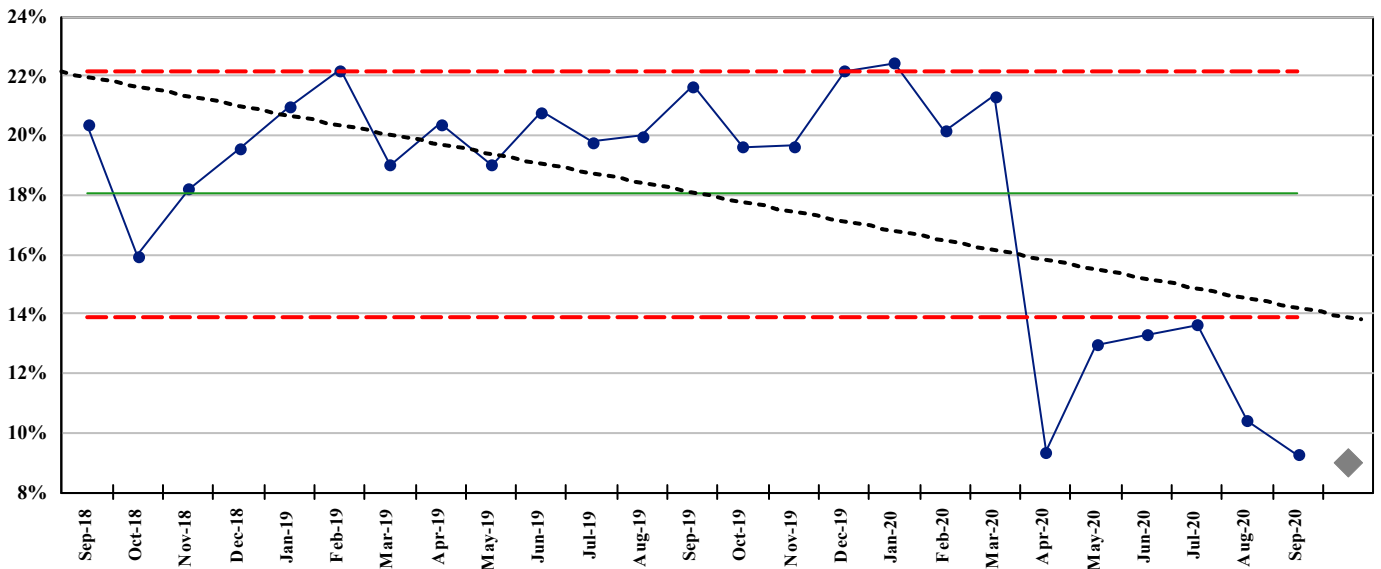
Child Health Clinical Excellence performance indicators for period ending September 2020

Patient Centred

PR056. % WNB rate for outpatient appointments - All Ethnicities



PR057. % WNB rate for outpatient appointments - Maori

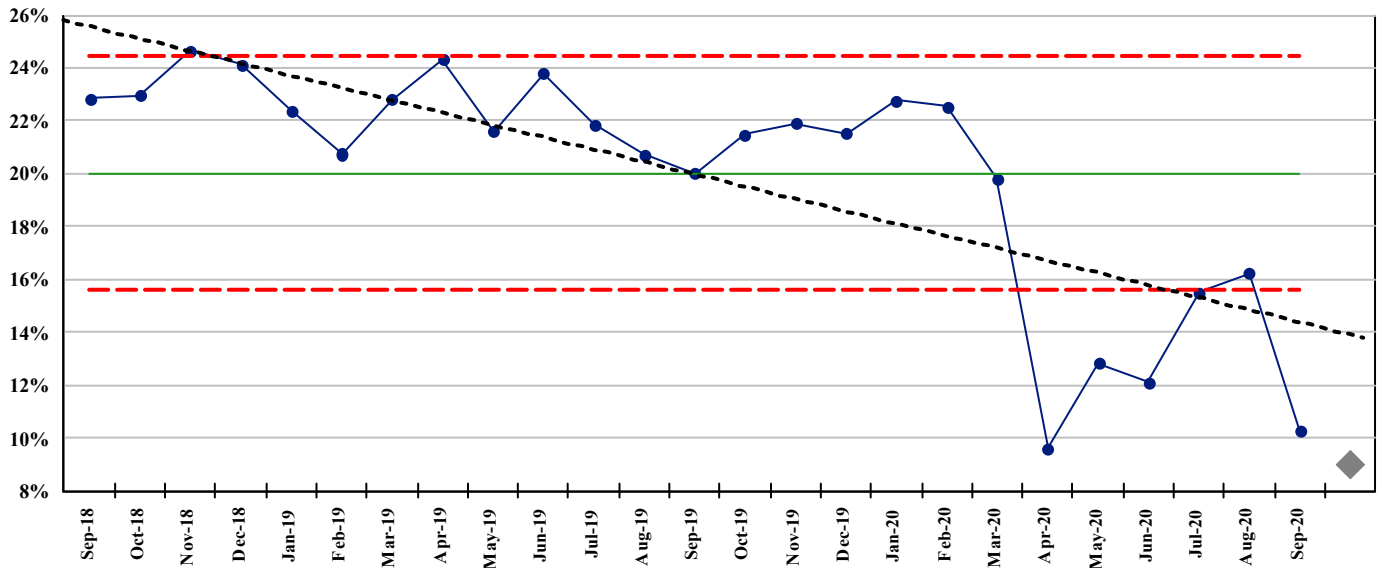


Auckland DHB

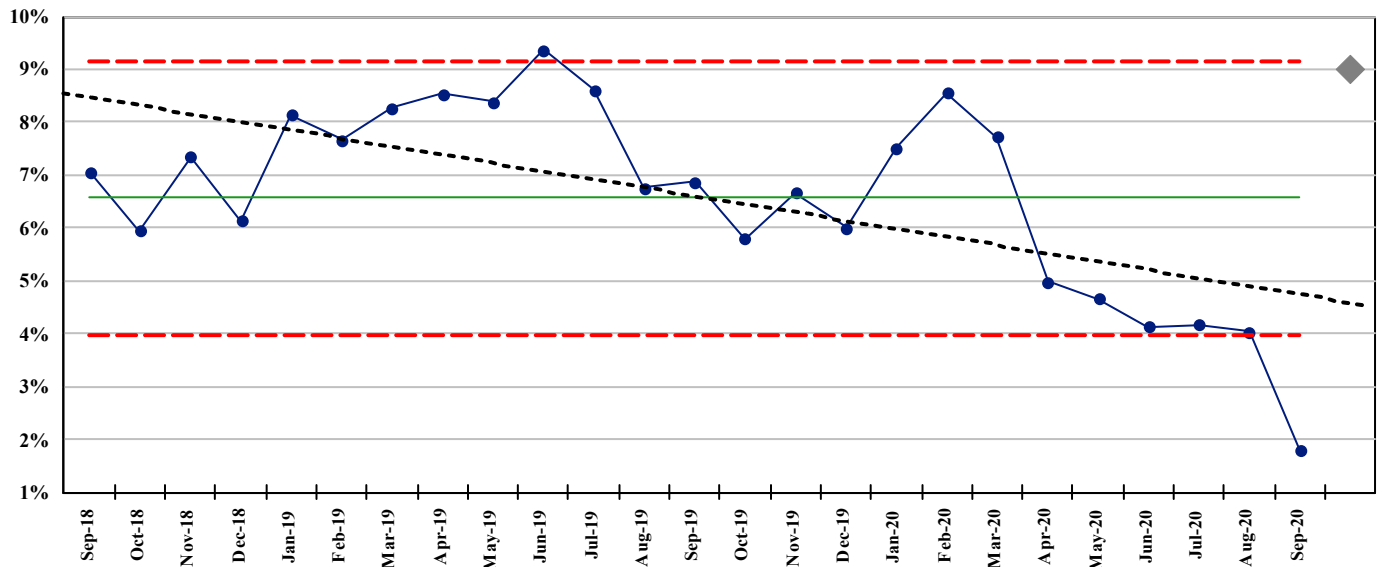
Child Health Clinical Excellence performance indicators for period ending September 2020

Patient Centred

PR058. % WNB rate for outpatient appointments - Pacific



PR337. % WNB rate for outpatient appointments - Asian

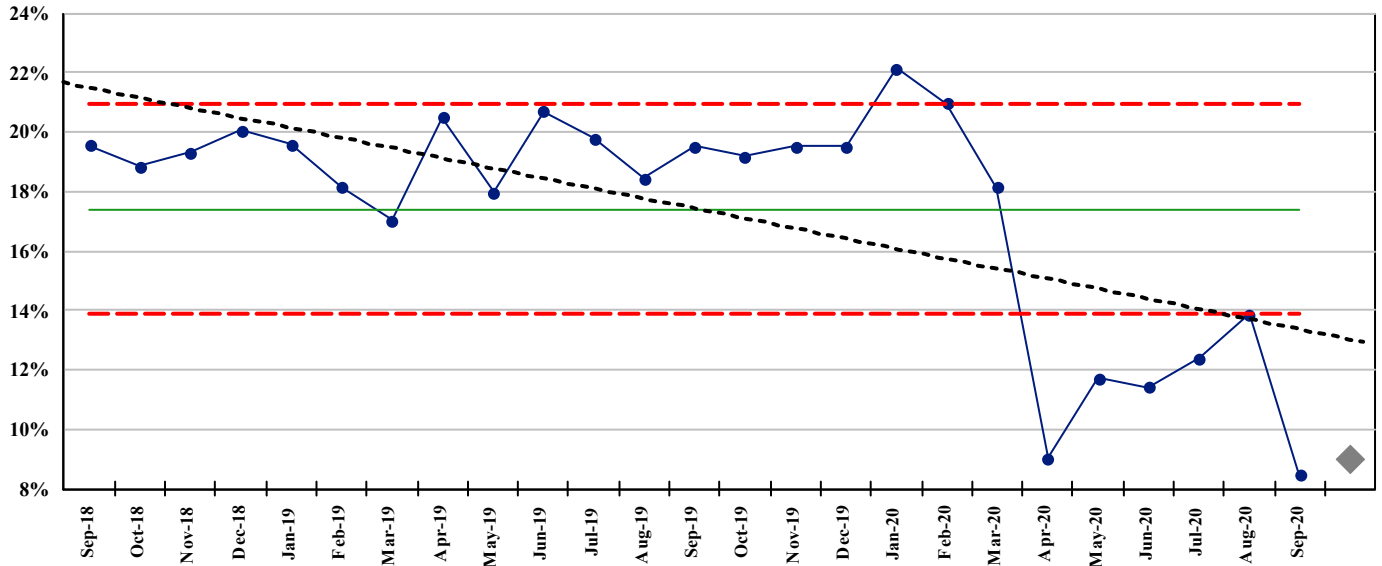


Auckland DHB

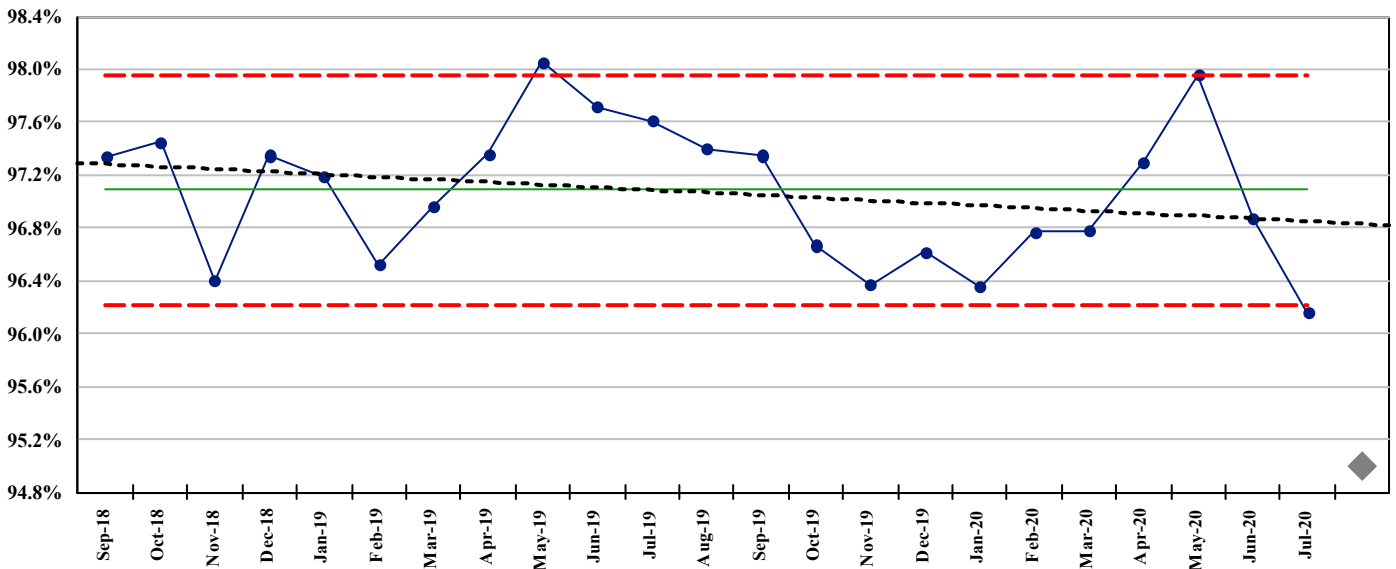
Child Health Clinical Excellence performance indicators for period ending September 2020

Patient Centred

PR338. % WNB rate for outpatient appointments - Deprivation Scale Q5



PR439. Electronic Discharge Summary completion – Child Health

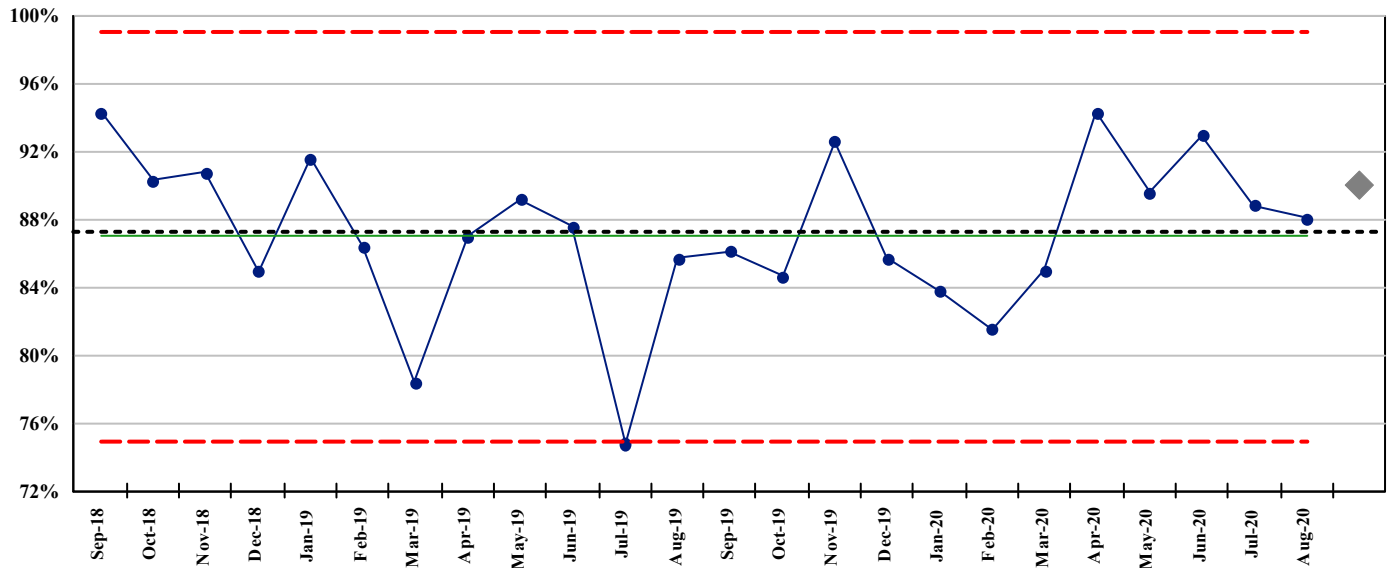


Auckland DHB

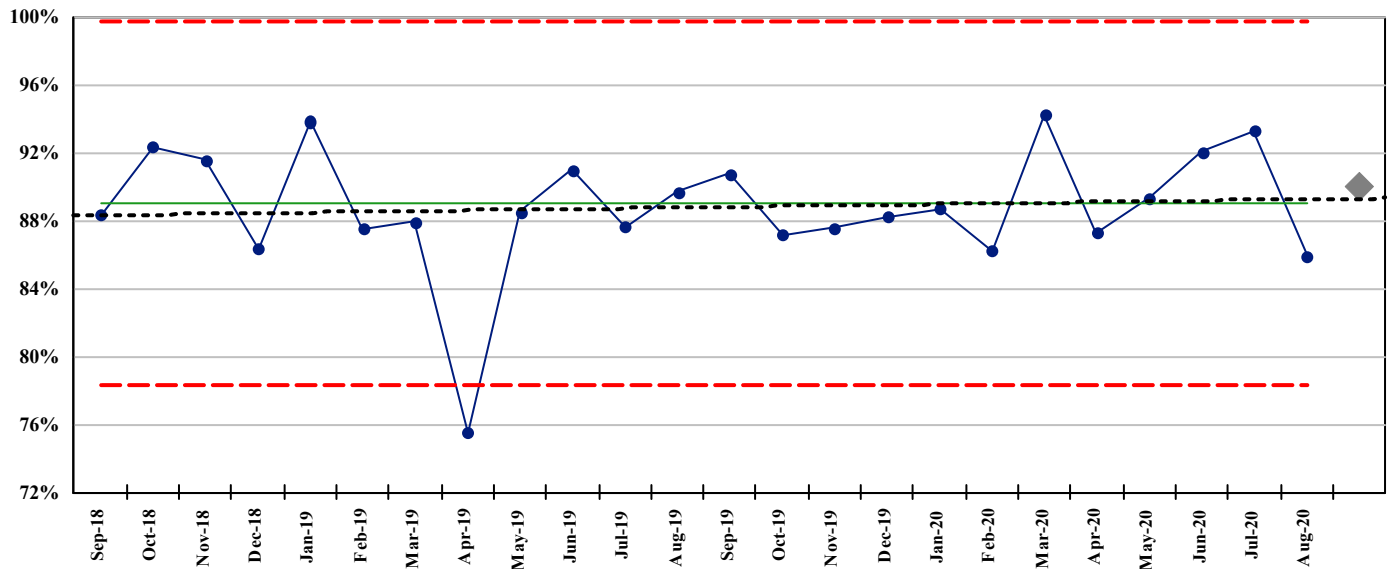
Child Health Clinical Excellence performance indicators for period ending September 2020

Patient Centred

PR154. % Very good and excellent ratings for overall inpatient experience



PR179. % Very good and excellent ratings for overall outpatient experience

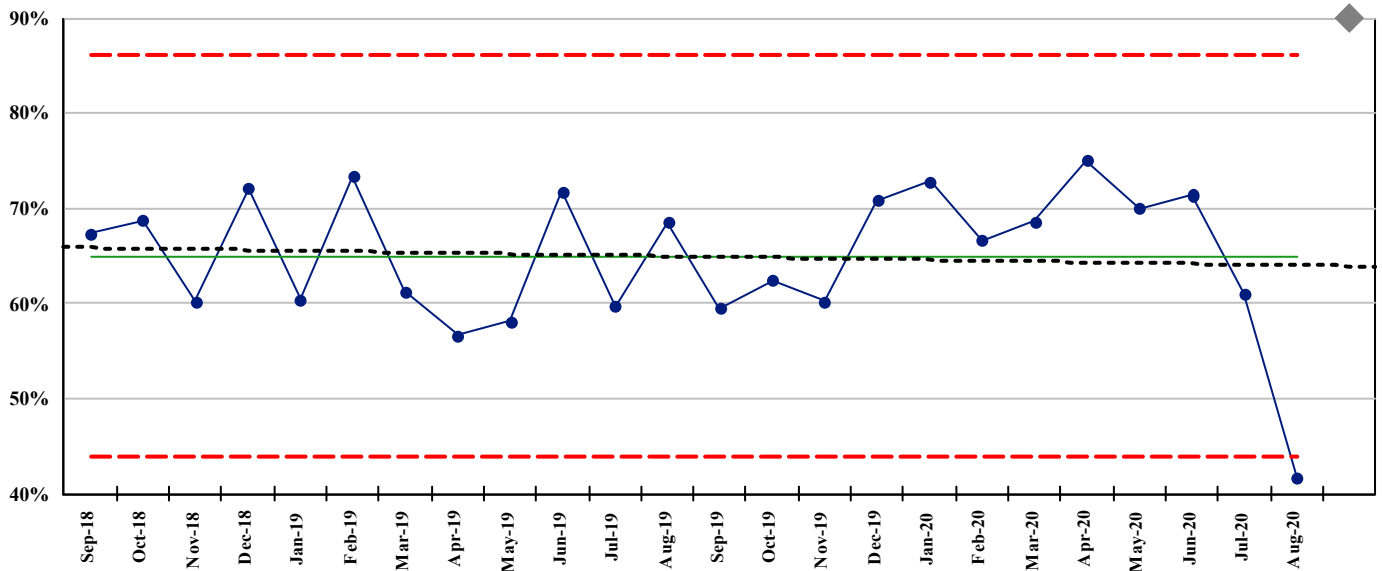


Auckland DHB

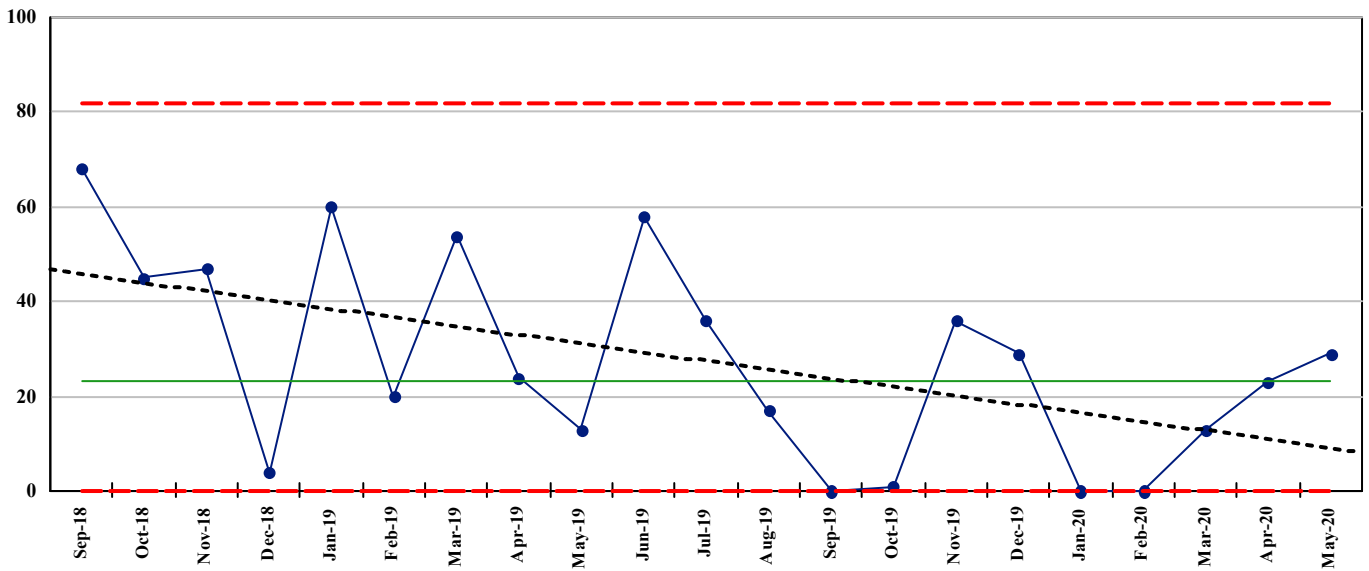
Child Health Clinical Excellence performance indicators for period ending September 2020

Patient Centred

PR493. % Very good and excellent ratings for coordination of care after discharge



PR336. Number of compliments received

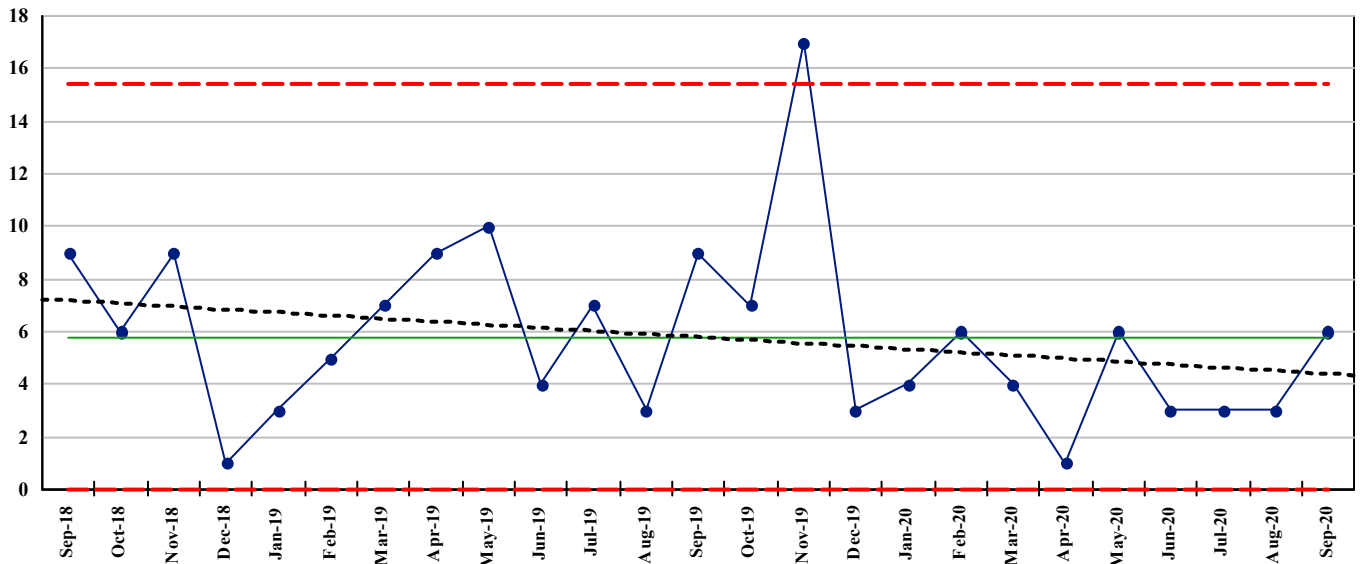


Auckland DHB

Child Health Clinical Excellence performance indicators for period ending September 2020

Patient Centred

PR085. Number of complaints received



PR376. Child Health Nursing Family Feedback

