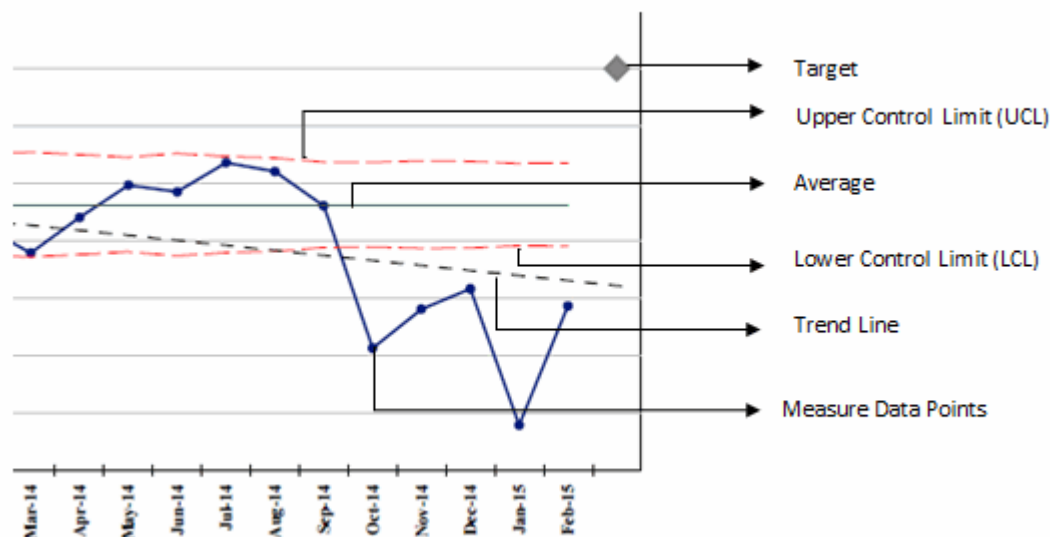


## Auckland DHB

### Child Health Clinical Excellence performance indicators for period ending October 2020

#### Understanding Control Charts

The following control charts plot process data in a time-ordered sequence to identify common cause and special cause variation.



- **Expected Variation Region**

The area between the lower and upper control limits (LCL and UCL), where the process is expected to perform. This is also known as common cause variation and refers to occurrences that contribute to the natural variation of any process.

- **Unexpected Variation Region**

The area beyond the control limits, also known as special cause variation. Special causes are unusual occurrences that are not normally (or intentionally) part of the process and create instability.

- **Charts without average and control limit lines indicate:**

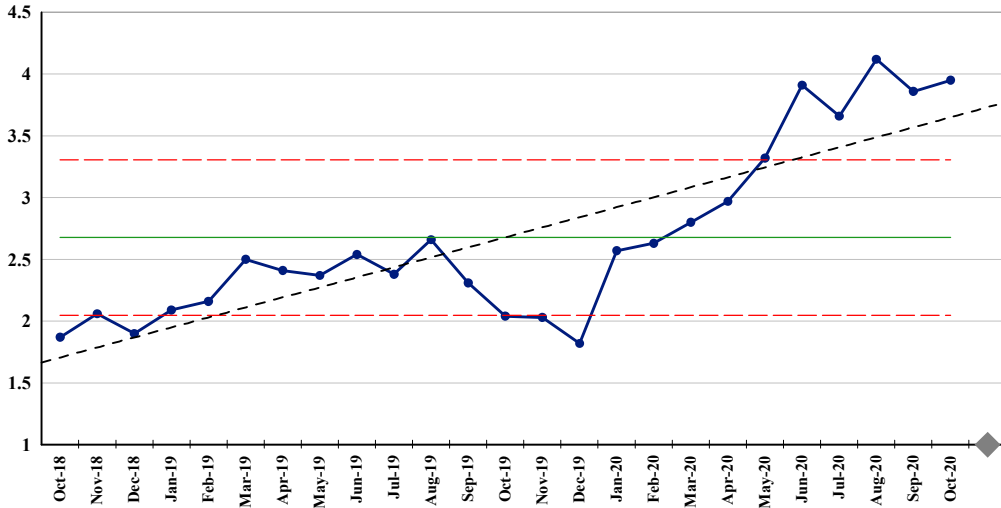
Metric value has manual data entry of percentage or rate value rather than numerator and denominator values. Percentage and rate control charts require numerator and denominator values in order to calculate average and control limits.

# Auckland DHB

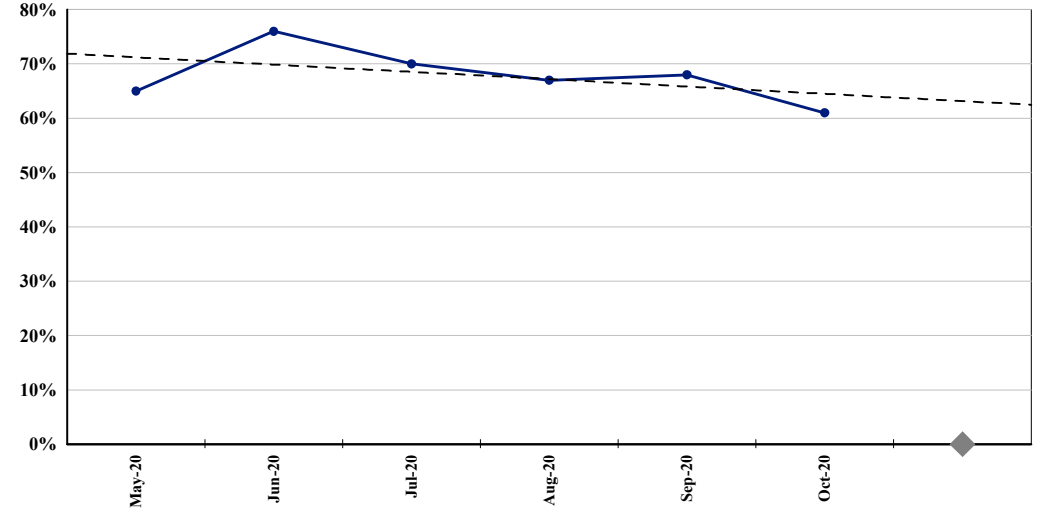
## Child Health Clinical Excellence performance indicators for period ending October 2020

### Safety

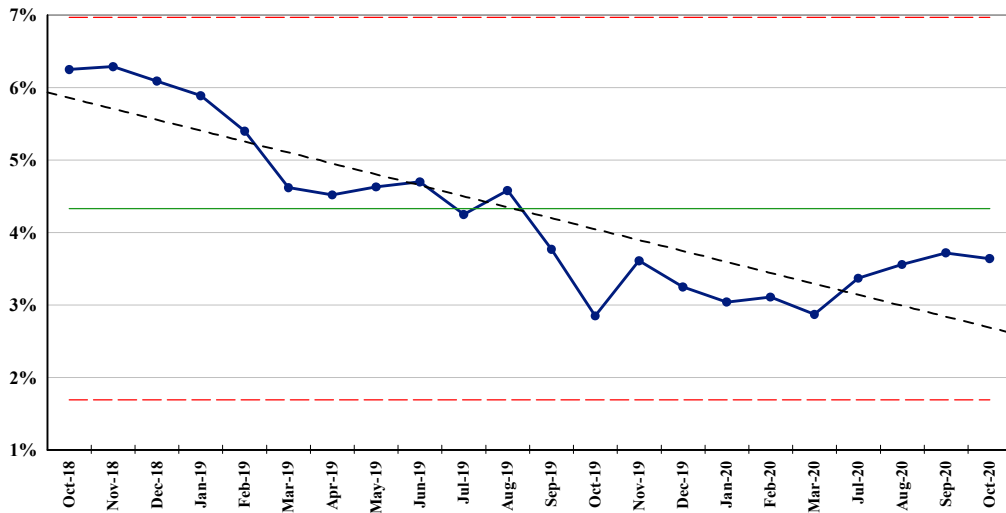
**PR722. Central line associated bacteraemia rate per 1,000 central line days (rolling 6 month average)**



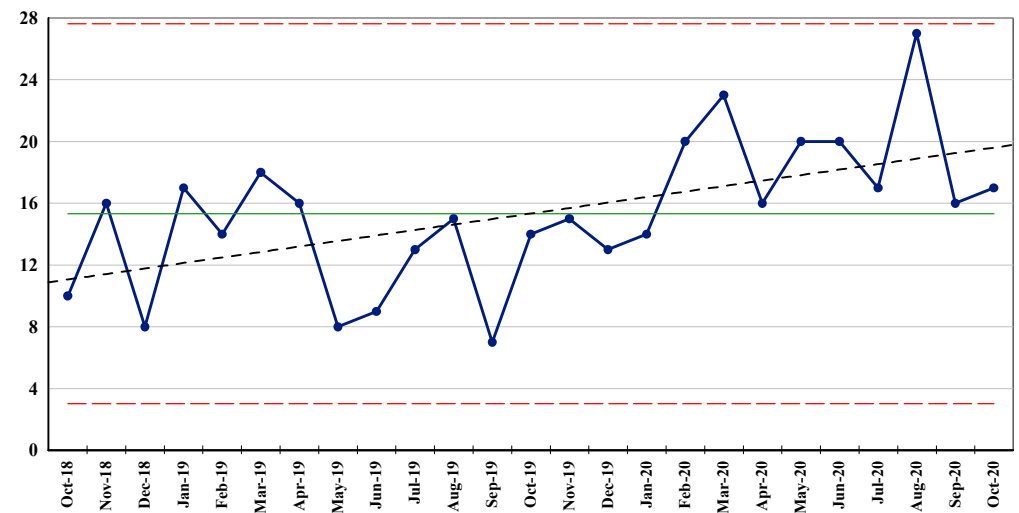
**PR808. % Reported medication/fluid incidents that would be prevented by an electronic system**



**PR185. Nosocomial pressure injury point prevalence - 12 month average (% of in-patients)**



**PR334. Good Catches**

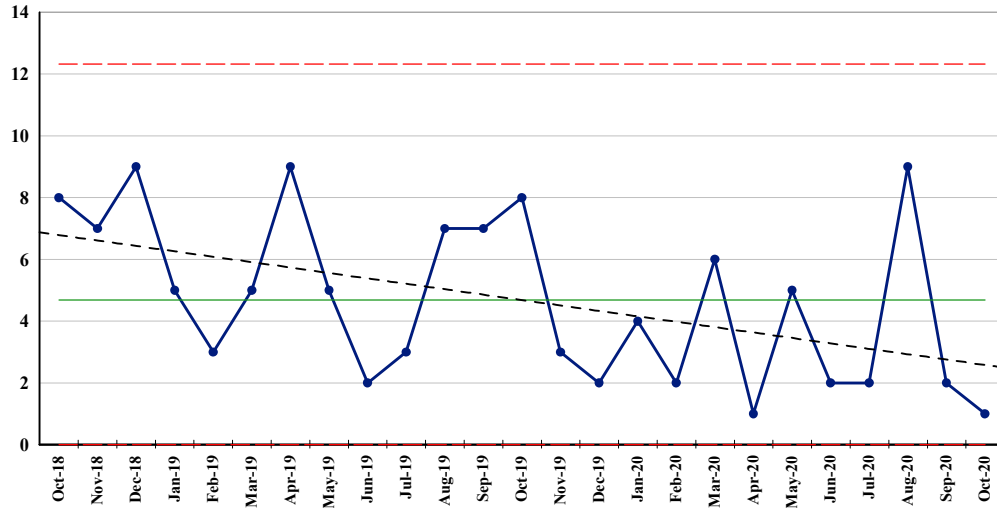


# Auckland DHB

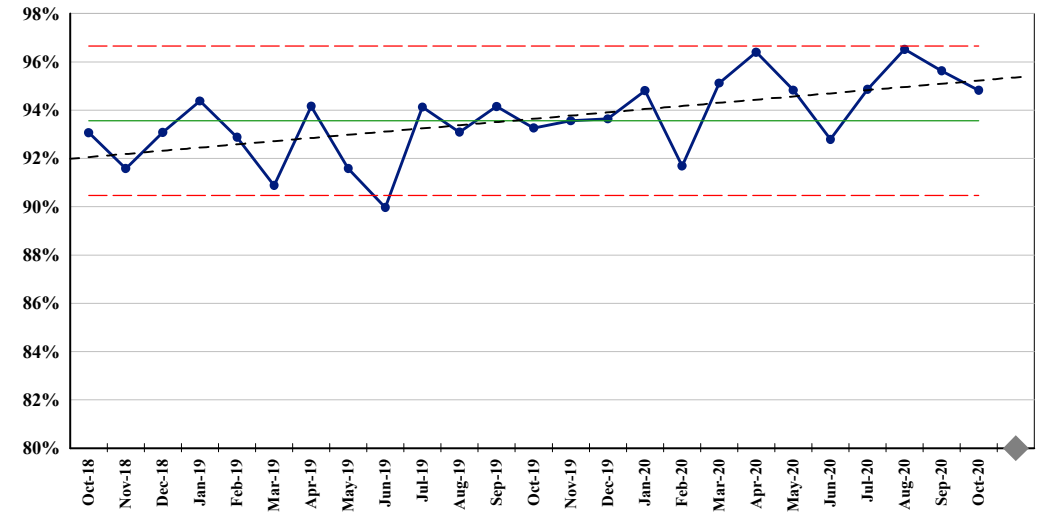
## Child Health Clinical Excellence performance indicators for period ending October 2020

### Safety

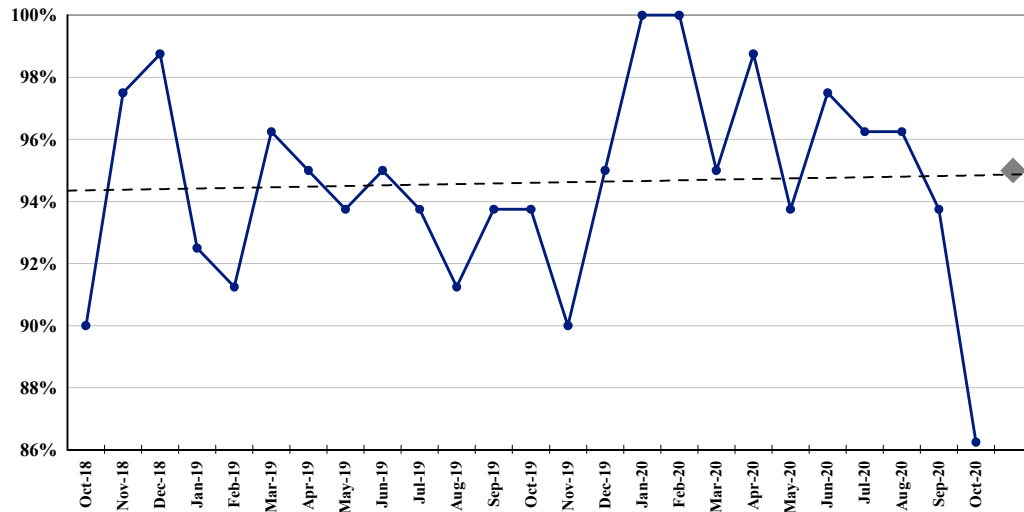
**PR335. Paediatric Code Blue Calls**



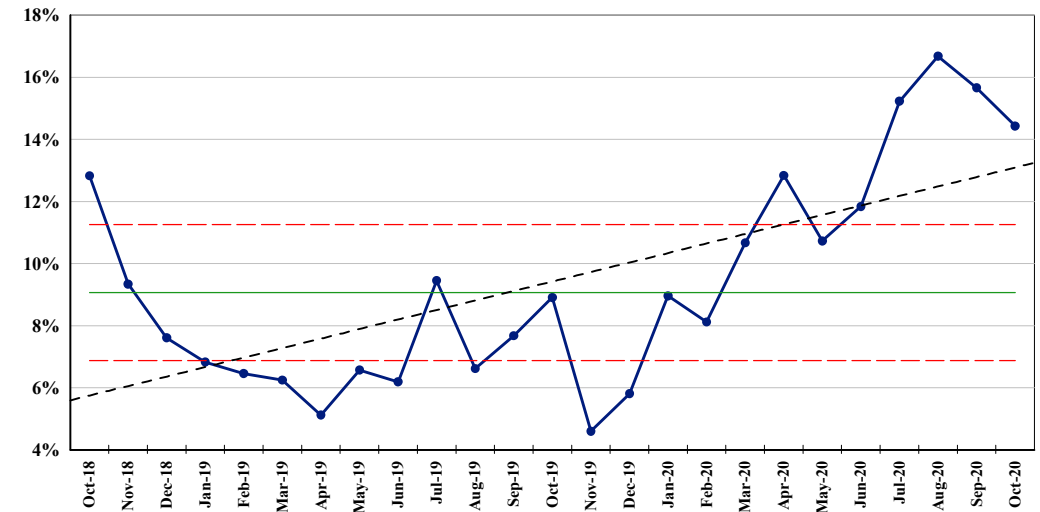
**PR195. % Hand hygiene compliance**



**PR355. % PEWS score documented**



**PR483. % Family Violence Screening compliance**

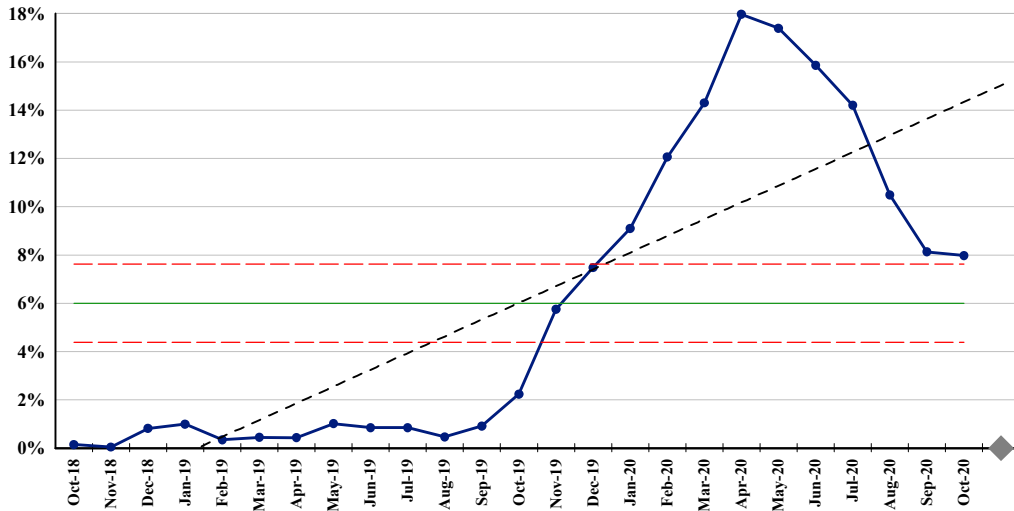


# Auckland DHB

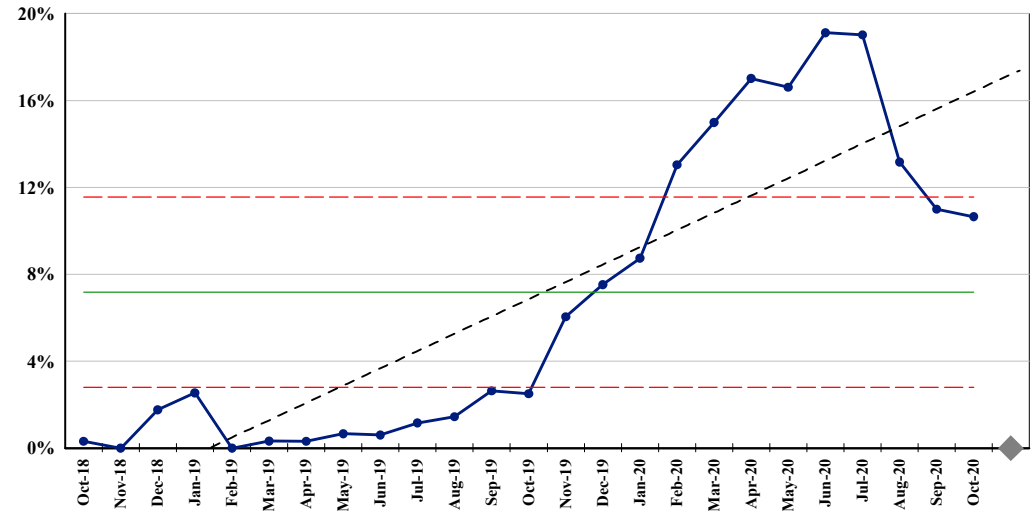
## Child Health Clinical Excellence performance indicators for period ending October 2020

### Timeliness

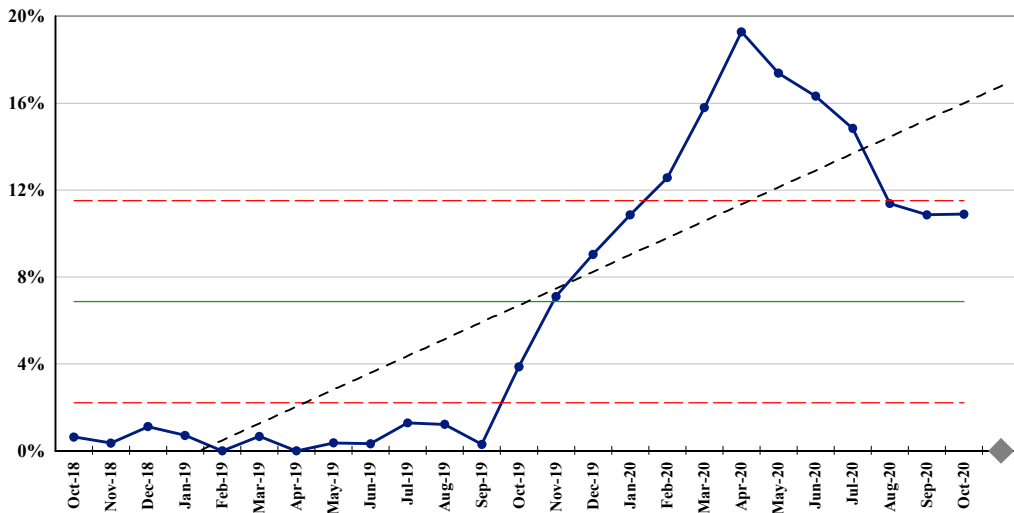
**PR038. (ESPI-2) Patients waiting longer than 4 months for their FSA**



**PR811. (ESPI-2) Patients waiting longer than 4 months for their FSA - Maori**



**PR812. (ESPI-2) Patients waiting longer than 4 months for their FSA - Pacific people**

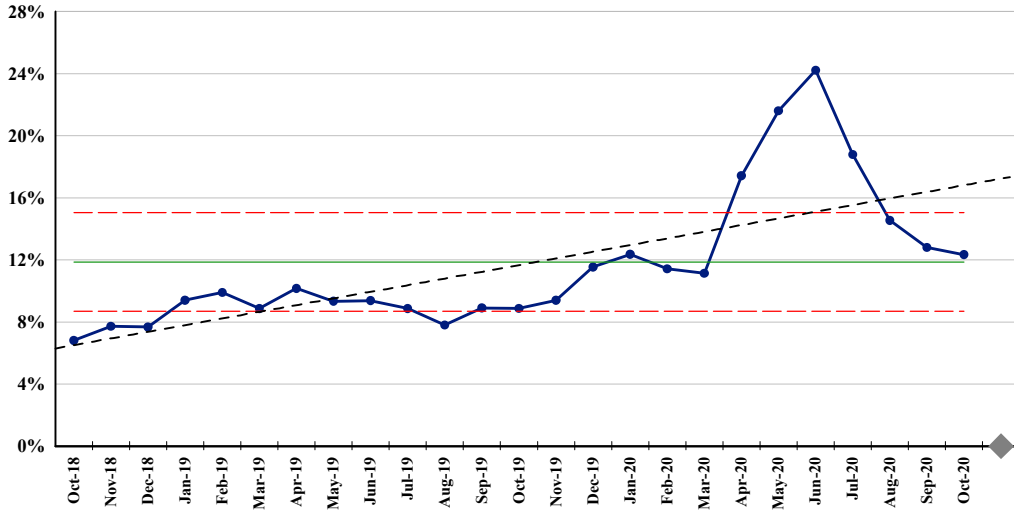


# Auckland DHB

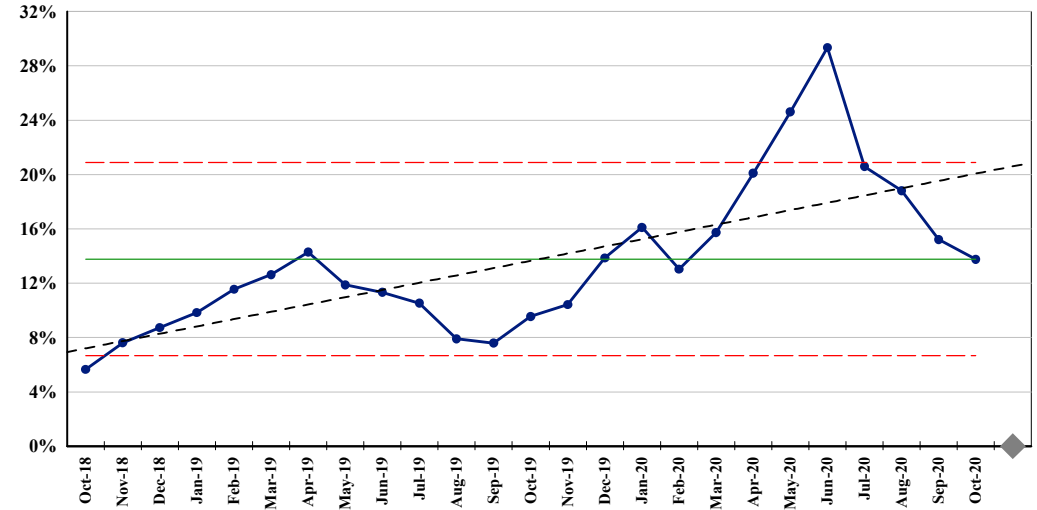
## Child Health Clinical Excellence performance indicators for period ending October 2020

### Timeliness

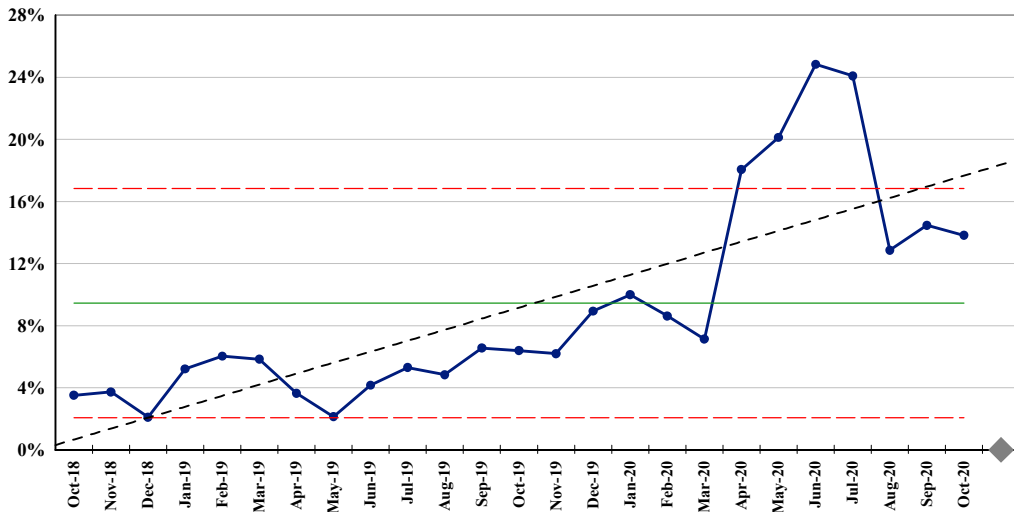
**PR039. (ESPI-5) Patients given a commitment to treatment but not treated within 4 months**



**PR813. (ESPI-5) Patients given a commitment to treatment but not treated within 4 months - Maori**



**PR814. (ESPI-5) Patients given a commitment to treatment but not treated within 4 months - Pacific people**

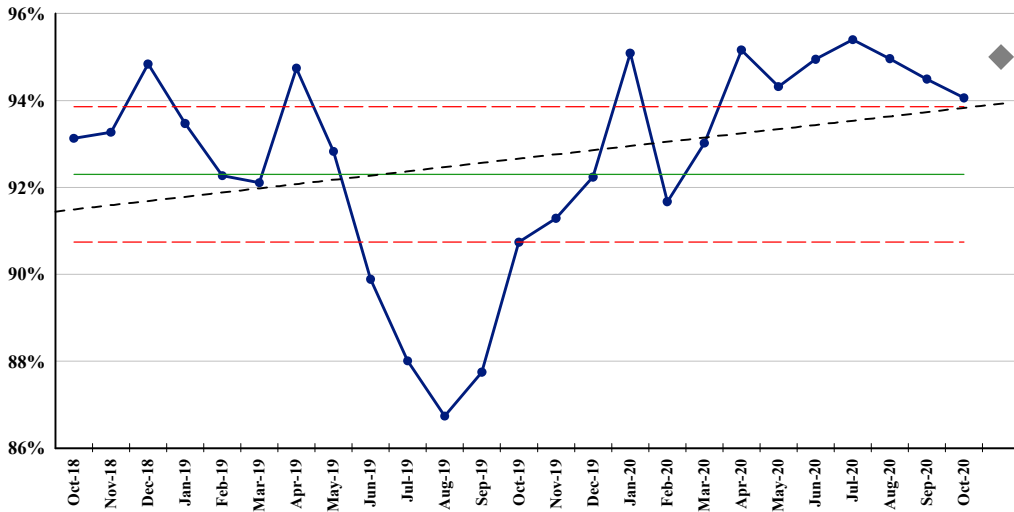


# Auckland DHB

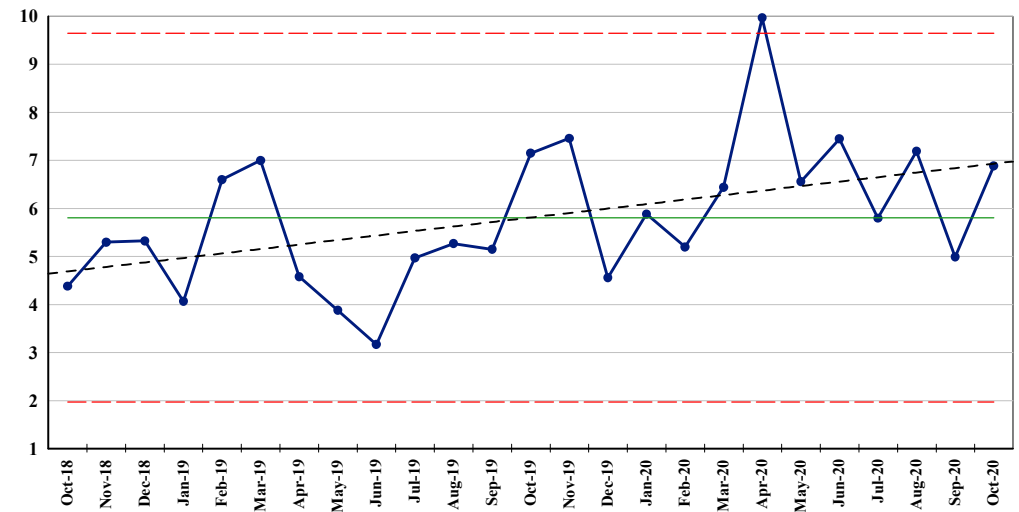
## Child Health Clinical Excellence performance indicators for period ending October 2020

### Timeliness

PR016. (MOH-01) % CED patients with ED stay < 6 hours



PR034. Median acute time to theatre (decimal hours) - Starship

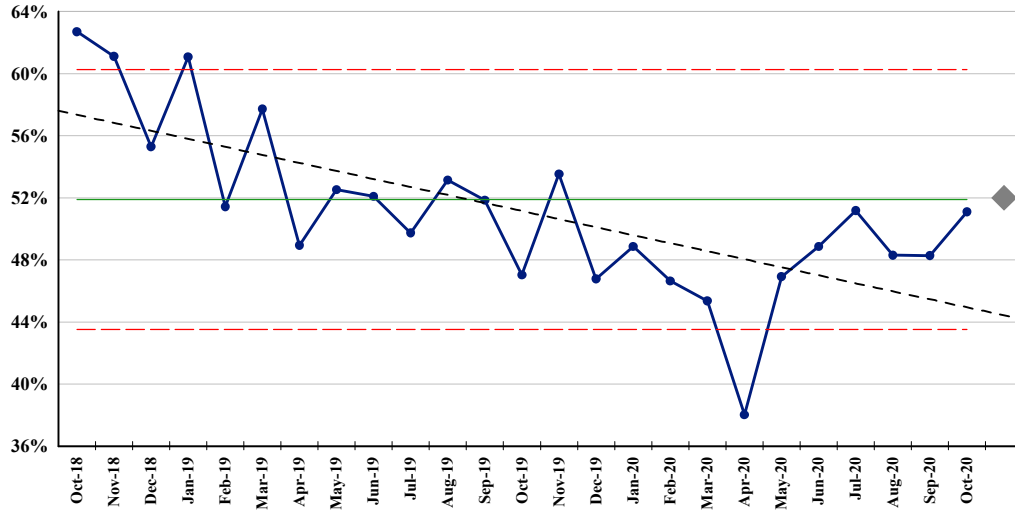


# Auckland DHB

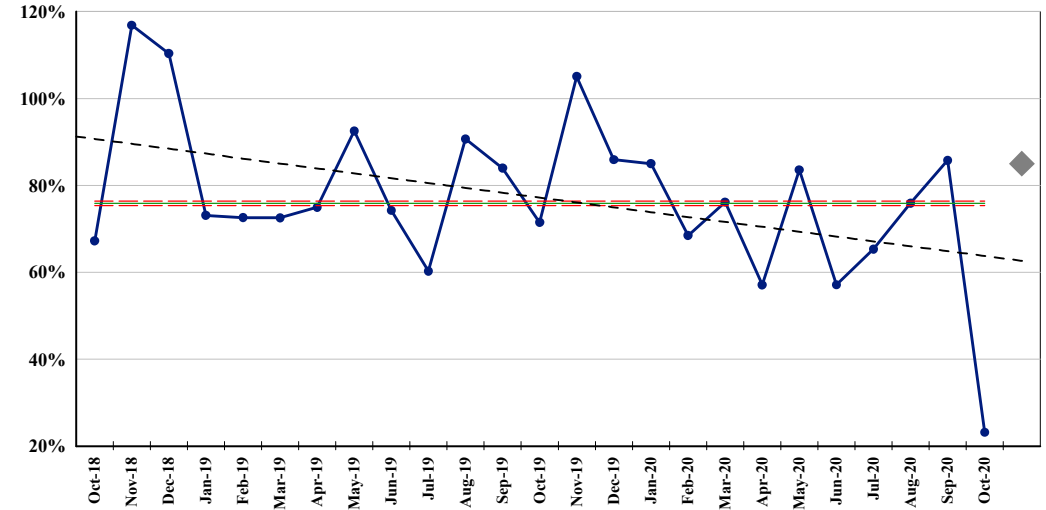
## Child Health Clinical Excellence performance indicators for period ending October 2020

### Efficiency

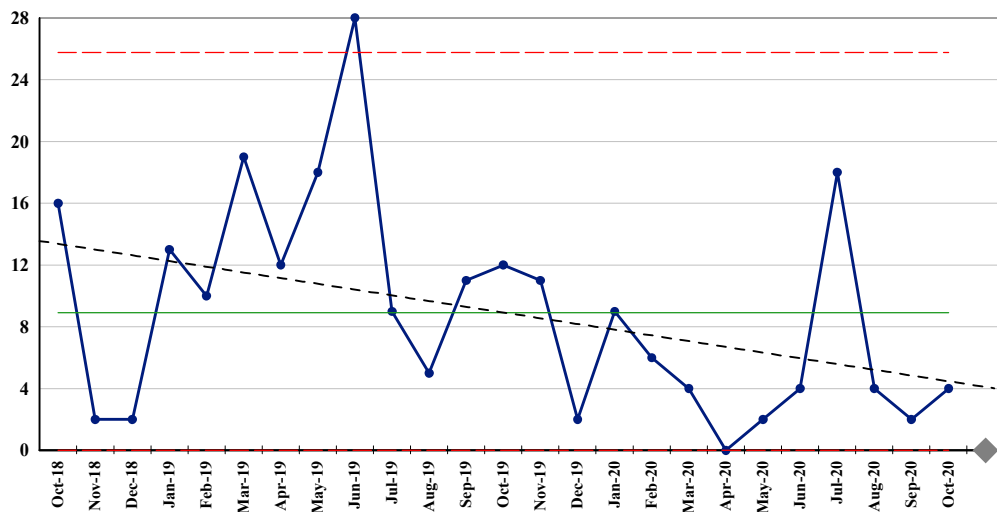
**PR052. % Day Surgery Rate**



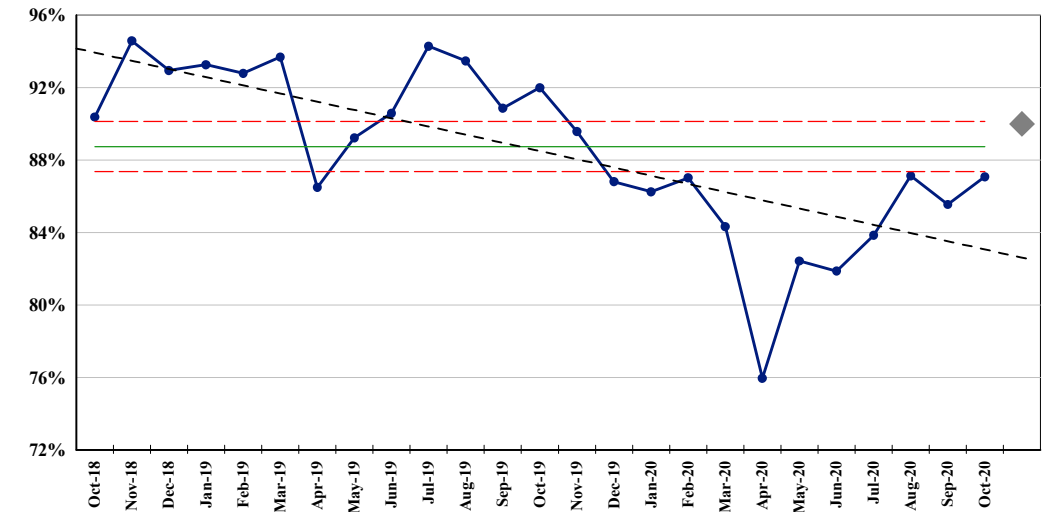
**PR198. % Adjusted Session Theatre Utilisation**



**PR333. PICU Exit Blocks**



**PR444. Average Occupancy**

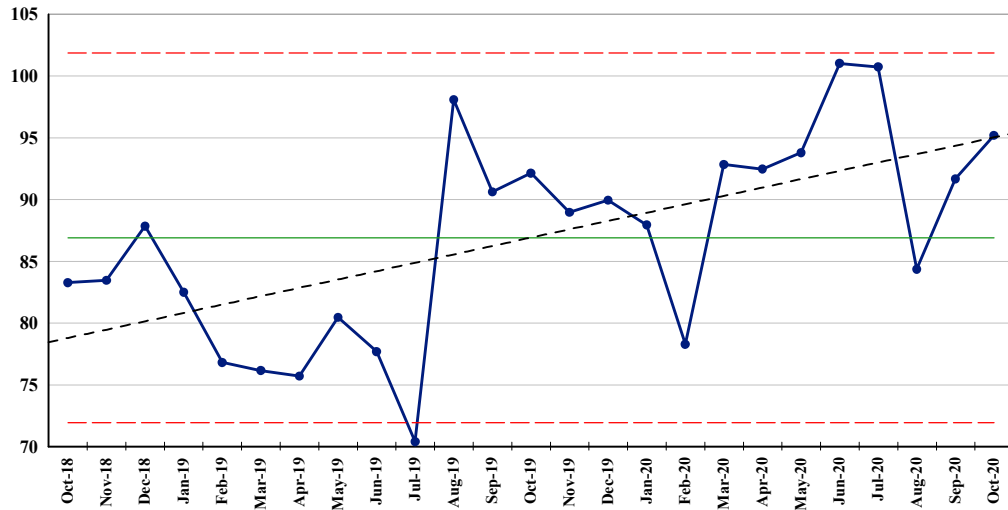


# Auckland DHB

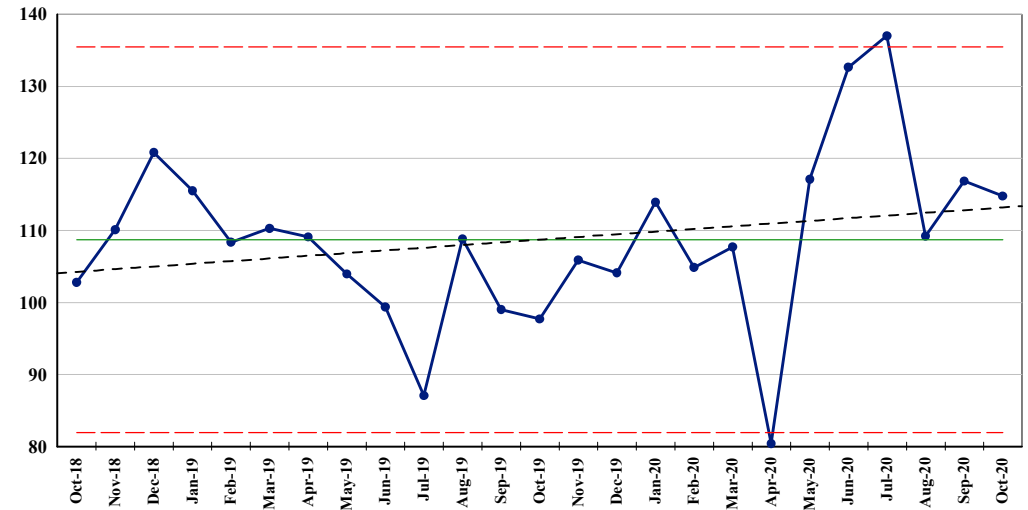
## Child Health Clinical Excellence performance indicators for period ending October 2020

### Efficiency

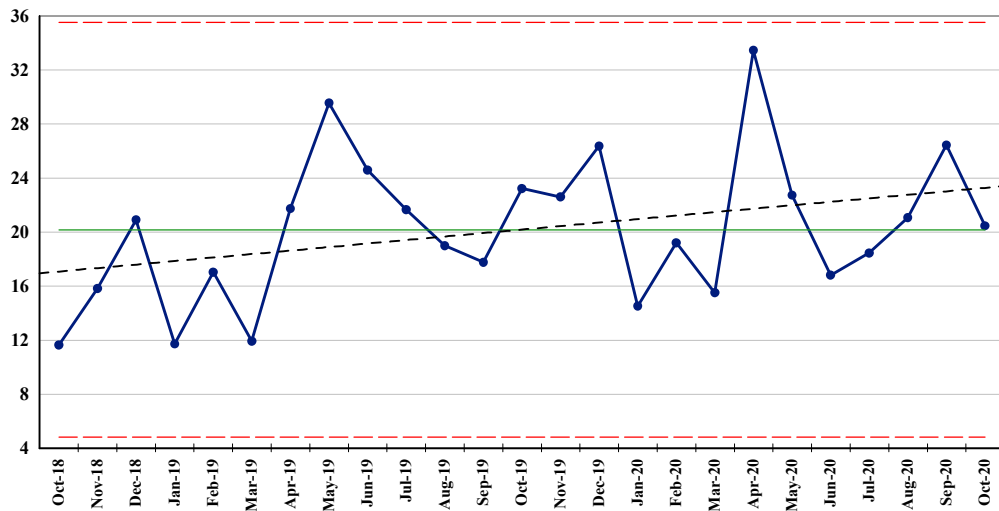
**PR441. Laboratory cost per bed day (\$) - Child Health**



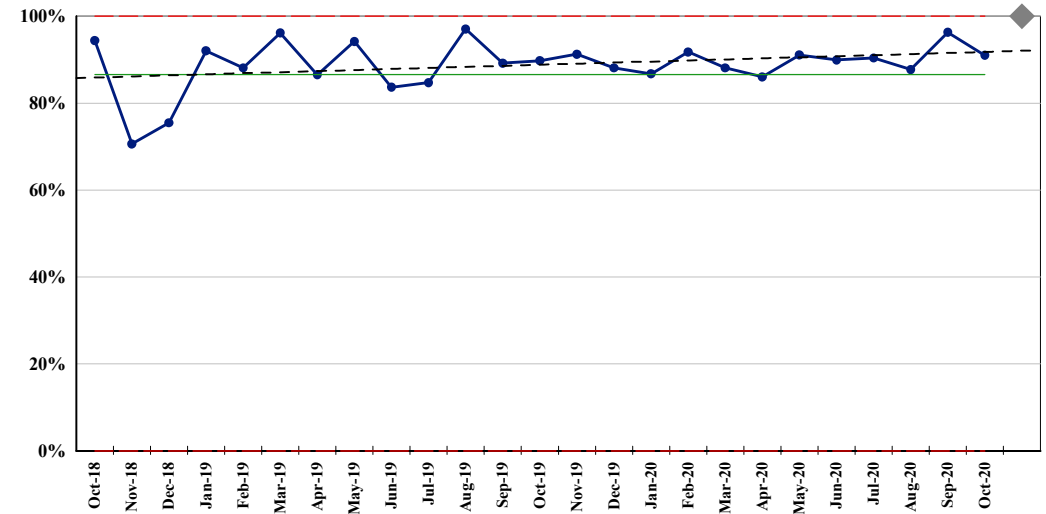
**PR442. Radiology cost per bed day (\$) - Child Health**



**PR443. Antibiotic cost per bed day (\$) - Child Health**



**PR719. % adherence with antimicrobial guidelines**



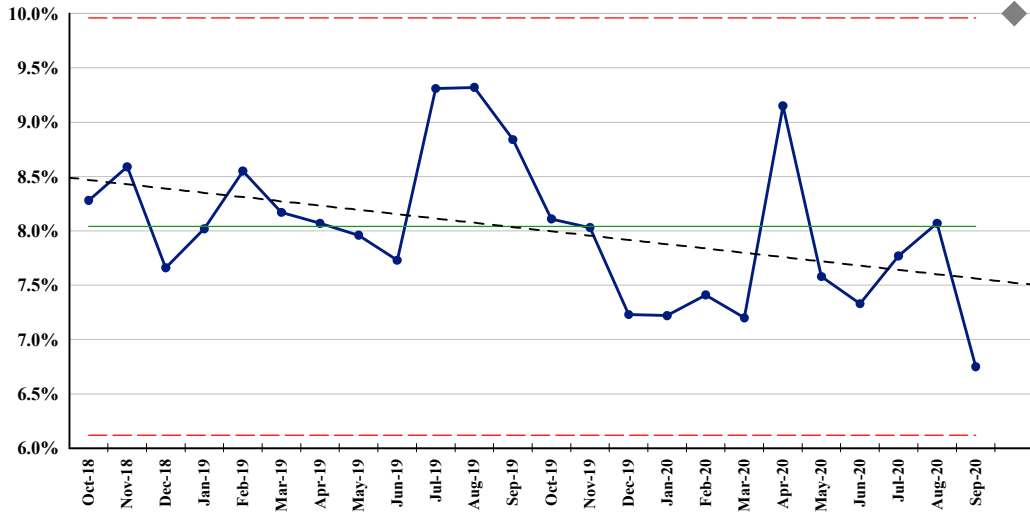


# Auckland DHB

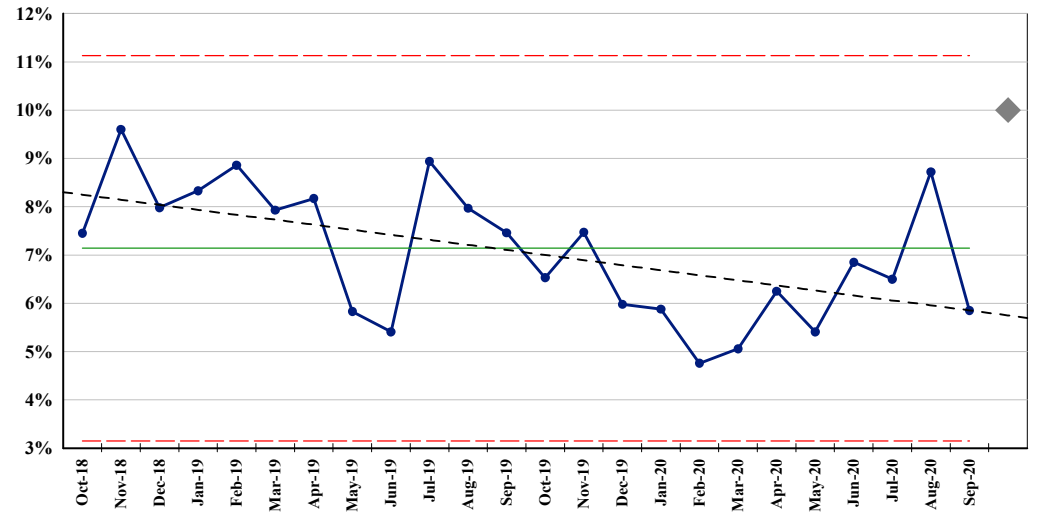
## Child Health Clinical Excellence performance indicators for period ending October 2020

### Effectiveness

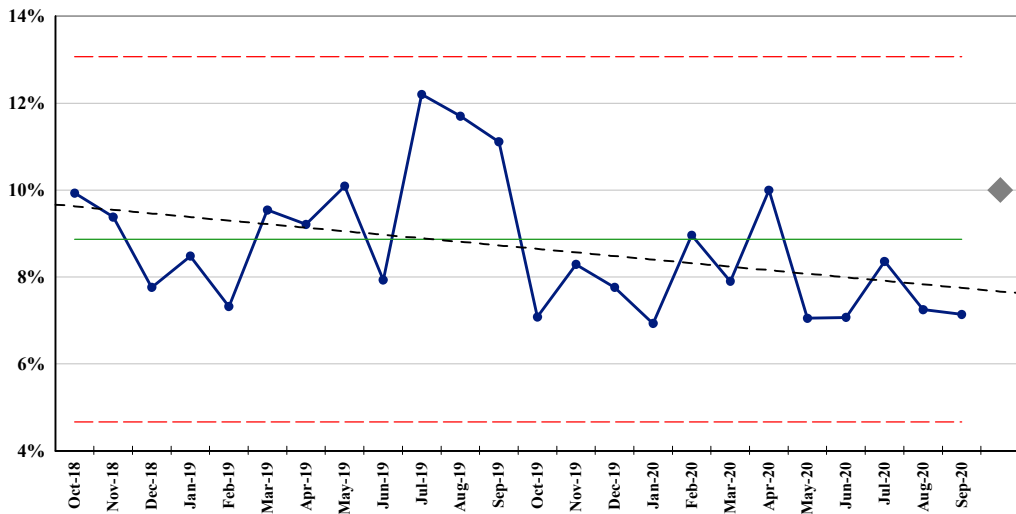
**PR713. 28 Day Readmission Rate – all DHBs – Total**



**PR714. 28 Day Readmission Rate – all DHBs – Maori**



**PR715. 28 Day Readmission Rate – all DHBs – Pacific**

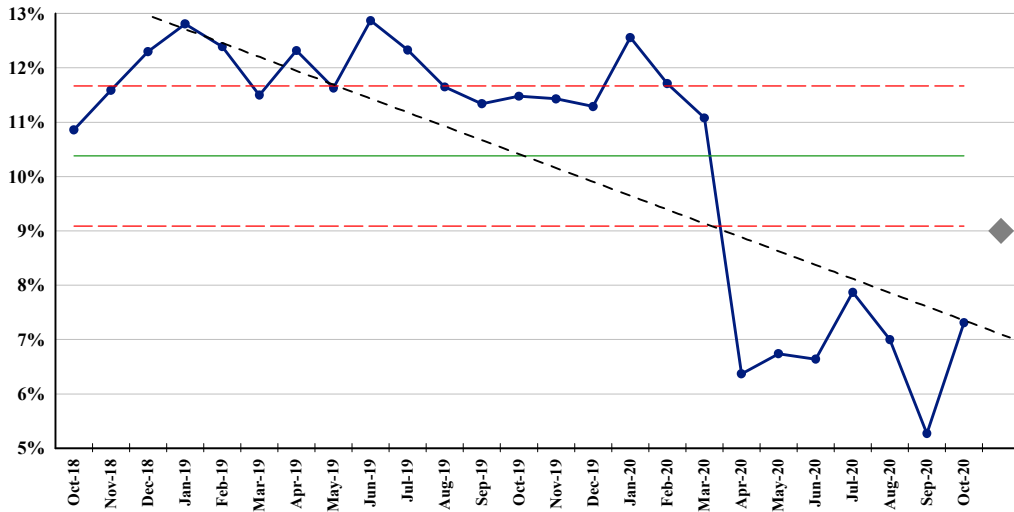


# Auckland DHB

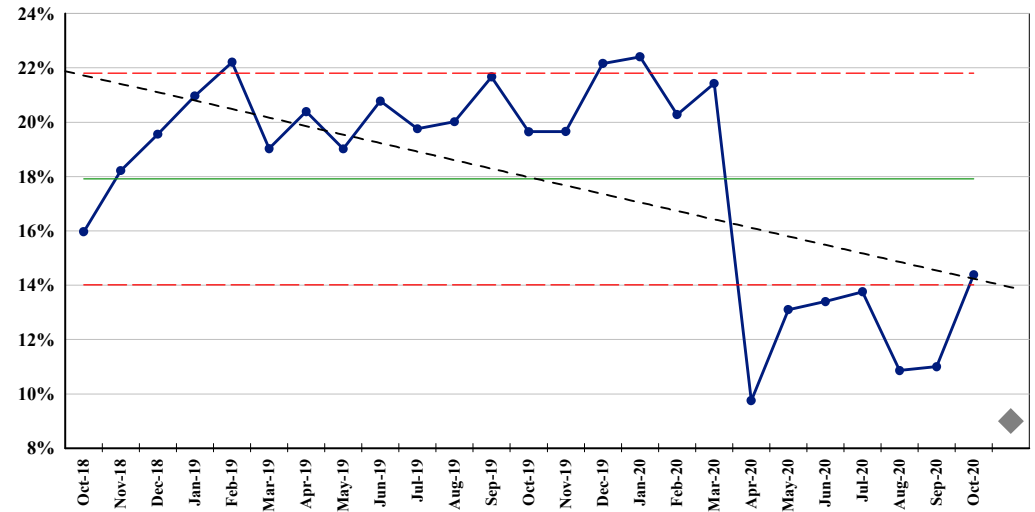
## Child Health Clinical Excellence performance indicators for period ending October 2020

### Patient Centred

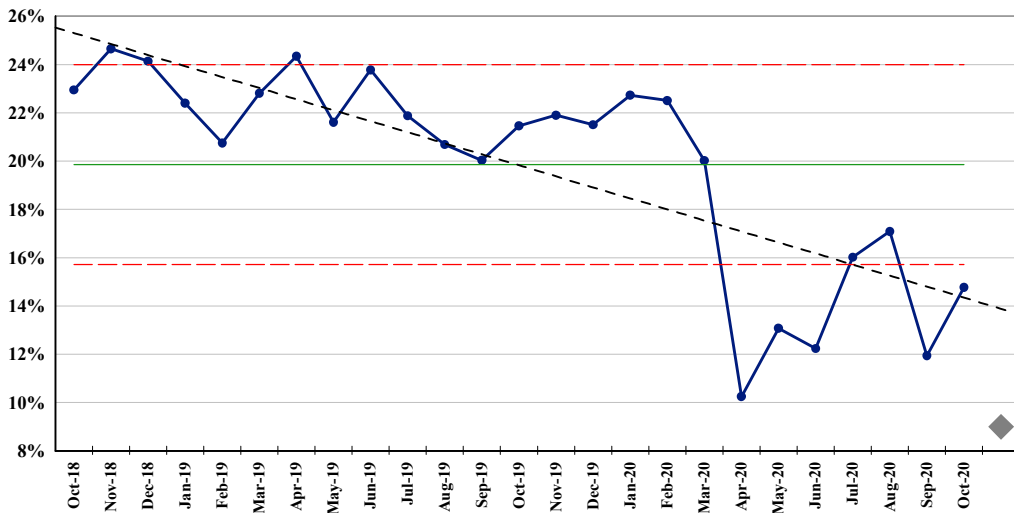
**PR056. % WNB rate for outpatient appointments - All Ethnicities**



**PR057. % WNB rate for outpatient appointments - Maori**



**PR058. % WNB rate for outpatient appointments - Pacific**

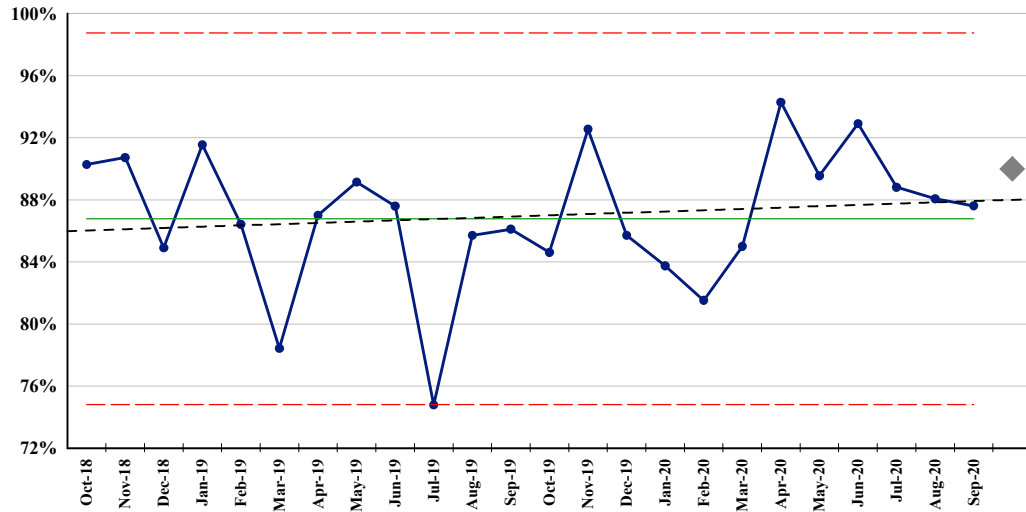


# Auckland DHB

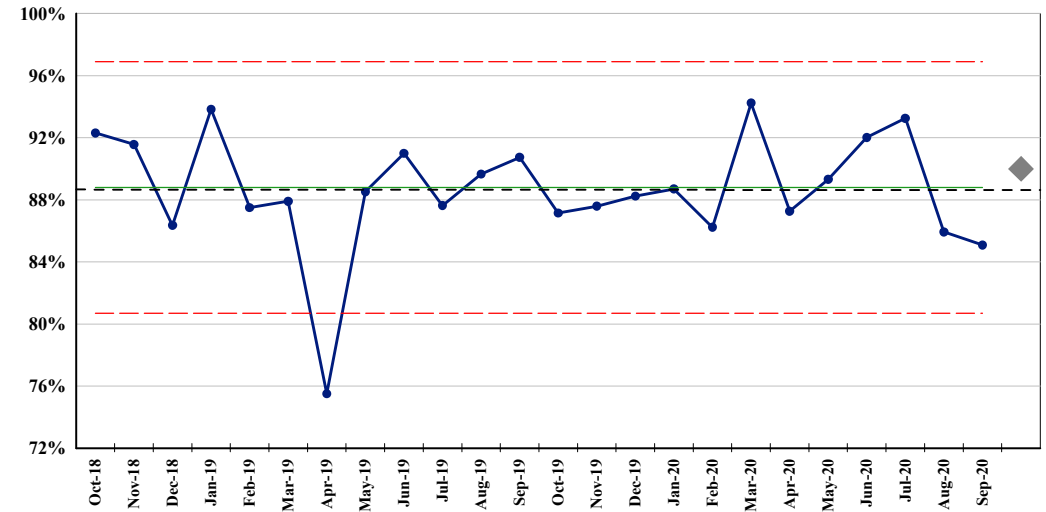
## Child Health Clinical Excellence performance indicators for period ending October 2020

### Patient Centred

**PR154. % Very good and excellent ratings for overall inpatient experience**



**PR179. % Very good and excellent ratings for overall outpatient experience**



**PR493. % Very good and excellent ratings for coordination of care after discharge**

